

Property Type	Area	Benchmark Price	Price Index	1 Month Change %	3 Month Change %	6 Month Change %	1 Year Change %	3 Year Change %	5 Year Change %	10 Year Change %
Residential / Composite	Lower Mainland	\$1,032,700	315.2	-1.1%	-2.3%	-5.1%	-6.0%	-1.4%	13.5%	32.5%
	Greater Vancouver	\$1,101,900	315.2	-1.2%	-2.2%	-5.1%	-5.7%	-0.4%	12.3%	25.5%
	Bowen Island	\$1,406,500	287.8	3.0%	0.3%	-2.2%	-6.2%	-4.0%	15.4%	105.0%
	Burnaby East	\$1,015,100	323.4	-1.4%	-3.0%	-7.8%	-9.7%	-5.2%	10.8%	34.9%
	Burnaby North	\$928,800	311.7	0.2%	0.0%	-4.3%	-6.3%	-3.1%	8.8%	35.3%
	Burnaby South	\$1,016,100	323.7	-0.1%	-2.2%	-4.8%	-6.9%	-2.6%	10.2%	34.4%
	Coquitlam	\$1,000,400	316.3	-1.4%	-2.9%	-5.0%	-6.3%	-5.1%	12.8%	44.0%
	Ladner	\$1,076,500	320.4	0.4%	-1.7%	-5.9%	-5.7%	3.4%	26.1%	41.8%
	Maple Ridge	\$919,600	319.6	-0.8%	-2.6%	-4.7%	-5.9%	1.7%	22.1%	92.3%
	New Westminster	\$749,100	347.9	-2.3%	-3.4%	-6.4%	-8.5%	-3.3%	15.3%	58.7%
	North Vancouver	\$1,289,700	302.1	0.5%	-2.1%	-5.7%	-3.9%	1.3%	12.1%	30.9%
	Pitt Meadows	\$856,600	350.6	-0.6%	-1.2%	-4.4%	-5.1%	6.2%	25.1%	104.1%
	Port Coquitlam	\$896,200	350.8	-0.3%	-0.7%	-3.3%	-4.9%	2.0%	26.9%	80.7%
	Port Moody	\$1,040,900	337.1	-0.8%	-2.4%	-3.6%	-4.0%	-4.5%	19.7%	60.8%
	Richmond	\$1,056,600	348.6	-2.1%	-3.0%	-5.1%	-8.0%	-4.0%	14.3%	26.6%
	Squamish	\$1,122,200	373.7	1.5%	0.3%	-0.5%	5.3%	14.0%	34.5%	116.6%
	Sunshine Coast	\$798,100	292.6	0.7%	-2.2%	-4.0%	-6.9%	-3.0%	18.7%	108.7%
	Tsawwassen	\$1,164,200	302.1	3.5%	4.0%	-0.1%	-3.1%	4.1%	18.8%	21.8%
	Vancouver East	\$1,142,800	356.8	-1.1%	-2.6%	-4.8%	-5.6%	3.8%	14.7%	32.9%
	Vancouver West	\$1,219,800	291.7	-2.8%	-2.7%	-6.1%	-6.3%	-0.1%	2.7%	0.7%
West Vancouver	\$2,292,300	247.4	-3.1%	-3.8%	-7.8%	-7.0%	-8.4%	-7.6%	-8.6%	
Whistler	\$1,371,600	299.3	1.5%	-0.4%	-2.1%	4.1%	0.5%	24.4%	110.5%	
Single Family Detached	Lower Mainland	\$1,651,200	362.4	-1.4%	-3.0%	-5.7%	-7.3%	3.4%	17.5%	39.4%
	Greater Vancouver	\$1,850,800	345.4	-1.5%	-3.1%	-5.6%	-7.3%	3.1%	14.5%	23.9%
	Bowen Island	\$1,409,900	287.6	3.0%	0.3%	-2.2%	-6.2%	-4.0%	15.3%	104.8%
	Burnaby East	\$1,796,300	387.1	0.2%	-0.9%	-7.1%	-7.6%	6.0%	25.8%	52.8%
	Burnaby North	\$1,939,300	373.6	0.5%	0.3%	-7.4%	-8.0%	5.9%	22.5%	42.8%
	Burnaby South	\$2,028,500	384.4	0.3%	-2.8%	-5.7%	-9.4%	5.4%	18.9%	33.8%
	Coquitlam	\$1,647,800	387.8	-1.3%	-2.5%	-4.0%	-6.3%	-0.6%	19.1%	60.0%
	Ladner	\$1,303,300	325.9	0.3%	-1.2%	-7.0%	-6.5%	6.6%	25.2%	33.9%
	Maple Ridge	\$1,225,700	357.7	0.1%	-1.6%	-3.2%	-3.6%	6.4%	24.8%	108.7%
	New Westminster	\$1,473,300	358.2	-0.9%	-1.5%	-7.7%	-8.3%	2.8%	20.8%	51.6%
	North Vancouver	\$2,037,600	322.2	-0.2%	-3.2%	-6.9%	-6.9%	2.3%	10.1%	32.1%
	Pitt Meadows	\$1,189,700	360.5	-1.5%	0.1%	-4.2%	-3.7%	6.6%	19.7%	89.6%
	Port Coquitlam	\$1,340,100	377.8	-0.2%	-0.7%	-1.1%	-4.2%	5.3%	25.3%	77.6%
	Port Moody	\$1,997,100	384.1	-0.2%	-3.1%	-3.2%	-2.6%	0.3%	25.6%	71.2%
	Richmond	\$1,991,600	400.3	-2.2%	-3.5%	-4.8%	-8.7%	0.9%	15.9%	32.0%
	Squamish	\$1,738,400	429.1	4.7%	4.0%	2.3%	11.6%	21.1%	36.7%	135.5%
	Sunshine Coast	\$851,800	296.4	1.3%	-1.9%	-3.7%	-7.9%	-4.4%	17.0%	110.8%
	Tsawwassen	\$1,550,600	342.7	4.9%	6.3%	0.9%	-3.4%	11.1%	23.6%	31.8%
	Vancouver East	\$1,697,600	378.5	-1.2%	-3.3%	-5.6%	-8.1%	2.0%	11.5%	30.6%
	Vancouver West	\$2,956,400	311.3	-5.8%	-7.2%	-9.1%	-12.2%	-4.2%	-4.3%	-2.6%
West Vancouver	\$2,914,000	271.3	-5.1%	-5.6%	-8.1%	-8.2%	-3.8%	-2.4%	-0.7%	
Whistler	\$2,777,900	331.6	5.9%	7.3%	4.6%	12.4%	16.1%	37.5%	113.4%	

**HOW TO READ THE TABLE:**

- Benchmark Price: Estimated sale price of a benchmark property. Benchmarks represent a typical property within each market.
- Price Index: Index numbers estimate the percentage change in price on typical and constant quality properties over time. All figures are based on past sales.
- x Month/Year Change %: Percentage change of index over a period of x month(s)/year(s)  
In January 2005, the indexes are set to 100.
- Townhome properties are similar to Attached properties, a category that was used in the previous MLSLink HPI, but do not include duplexes.
- The above info is deemed reliable, but is not guaranteed. All dollar amounts in CDN.

Property Type	Area	Benchmark Price	Price Index	1 Month Change %	3 Month Change %	6 Month Change %	1 Year Change %	3 Year Change %	5 Year Change %	10 Year Change %
Townhouse	Lower Mainland	\$914,800	349.3	-1.1%	-1.8%	-4.9%	-5.6%	1.5%	28.5%	91.7%
	Greater Vancouver	\$1,043,400	365.6	-1.2%	-2.0%	-4.8%	-5.4%	1.8%	27.2%	85.4%
	Burnaby East	\$824,100	358.0	-6.1%	-6.6%	-9.0%	-4.7%	-3.3%	18.7%	87.0%
	Burnaby North	\$920,400	373.8	-0.8%	-0.2%	-2.8%	0.0%	4.0%	28.0%	98.7%
	Burnaby South	\$950,000	357.1	-3.8%	-5.1%	-8.2%	-6.4%	-2.9%	20.0%	83.1%
	Coquitlam	\$982,500	384.2	-1.2%	-4.6%	-9.4%	-7.2%	0.1%	26.3%	96.0%
	Ladner	\$966,000	386.1	-1.5%	-4.6%	-5.7%	-6.7%	4.6%	31.9%	105.5%
	Maple Ridge	\$725,600	358.9	-2.5%	-4.3%	-6.9%	-8.4%	3.0%	29.6%	129.5%
	New Westminster	\$876,600	382.5	-0.7%	-2.5%	-4.1%	-6.8%	-1.2%	27.5%	91.3%
	North Vancouver	\$1,269,900	343.6	1.0%	-2.1%	-3.5%	-7.5%	-2.6%	26.7%	75.9%
	Pitt Meadows	\$781,700	396.4	1.0%	-1.5%	-3.7%	-3.8%	4.9%	30.4%	133.6%
	Port Coquitlam	\$870,000	352.4	-1.5%	-1.6%	-7.7%	-5.5%	1.1%	27.5%	96.0%
	Port Moody	\$982,900	395.1	0.1%	-1.3%	-3.1%	-1.1%	0.2%	31.3%	111.6%
	Richmond	\$1,033,100	369.2	-2.3%	-2.3%	-6.1%	-7.4%	-4.2%	22.3%	75.6%
	Squamish	\$1,005,100	384.7	-1.4%	-2.7%	-1.3%	1.6%	7.3%	37.6%	148.8%
	Sunshine Coast	\$737,400	349.0	-1.6%	-2.1%	-0.9%	1.0%	7.5%	40.3%	133.3%
	Tsawwassen	\$908,100	267.2	-2.3%	-4.2%	-5.3%	-9.2%	-5.0%	13.3%	32.6%
	Vancouver East	\$1,037,100	347.2	0.2%	-1.4%	-6.2%	-7.9%	2.9%	18.3%	59.5%
	Vancouver West	\$1,397,300	332.0	-1.1%	2.5%	-1.1%	-5.2%	8.7%	23.1%	56.5%
Whistler	\$1,655,500	397.3	-2.3%	-3.4%	-2.3%	0.4%	4.8%	41.7%	161.7%	
Apartment	Lower Mainland	\$652,100	327.2	-0.7%	-1.7%	-5.2%	-6.2%	-2.2%	13.6%	65.3%
	Greater Vancouver	\$704,600	327.9	-0.8%	-1.6%	-5.3%	-5.9%	-1.9%	11.8%	65.0%
	Burnaby East	\$740,900	313.3	-1.2%	-1.5%	-3.3%	-5.0%	-0.8%	12.9%	70.5%
	Burnaby North	\$699,900	342.6	0.1%	-0.1%	-2.7%	-4.8%	-2.2%	13.7%	84.0%
	Burnaby South	\$766,400	355.3	0.1%	-1.5%	-4.3%	-6.6%	-1.7%	11.4%	71.9%
	Coquitlam	\$668,800	377.4	-1.8%	-2.6%	-4.8%	-8.0%	-3.8%	18.1%	101.7%
	Ladner	\$685,300	348.9	3.8%	4.3%	2.4%	7.2%	-1.7%	39.1%	110.7%
	Maple Ridge	\$505,700	369.9	-1.7%	-3.7%	-5.9%	-9.3%	-2.9%	21.7%	135.9%
	New Westminster	\$596,400	365.9	-3.6%	-4.3%	-6.1%	-8.9%	-2.8%	15.1%	91.7%
	North Vancouver	\$780,300	316.7	0.6%	-0.4%	-5.0%	-0.8%	4.8%	16.9%	82.5%
	Pitt Meadows	\$549,300	377.0	-1.3%	-3.5%	-5.8%	-9.5%	-2.1%	18.4%	127.0%
	Port Coquitlam	\$596,600	412.9	0.4%	0.0%	-3.5%	-6.9%	0.6%	26.4%	137.3%
	Port Moody	\$695,100	383.8	-2.1%	-1.6%	-4.9%	-5.3%	1.7%	19.3%	101.7%
	Richmond	\$663,500	371.3	-1.9%	-3.2%	-6.2%	-9.1%	-5.9%	14.0%	81.0%
	Squamish	\$563,200	333.3	-2.6%	-6.2%	-10.4%	-6.6%	-2.7%	20.4%	117.7%
	Sunshine Coast	\$457,800	275.5	-3.2%	-6.3%	-9.6%	-6.8%	-8.0%	6.0%	70.8%
	Tsawwassen	\$658,700	307.2	4.1%	4.0%	1.4%	4.2%	0.2%	28.8%	86.3%
	Vancouver East	\$638,700	370.7	-1.7%	-3.4%	-6.0%	-8.3%	-4.0%	5.7%	62.1%
	Vancouver West	\$777,200	302.4	-0.7%	-0.5%	-5.4%	-4.3%	-2.4%	3.5%	43.2%
West Vancouver	\$1,159,100	230.0	7.6%	6.0%	-9.2%	-1.4%	-3.2%	4.4%	33.2%	
Whistler	\$608,400	261.2	-0.8%	-5.5%	-10.4%	-8.0%	-5.3%	19.9%	118.2%	

**HOW TO READ THE TABLE:**

- Benchmark Price: Estimated sale price of a benchmark property. Benchmarks represent a typical property within each market.
- Price Index: Index numbers estimate the percentage change in price on typical and constant quality properties over time. All figures are based on past sales.
- x Month/Year Change %: Percentage change of index over a period of x month(s)/year(s)

In January 2005, the indexes are set to 100.

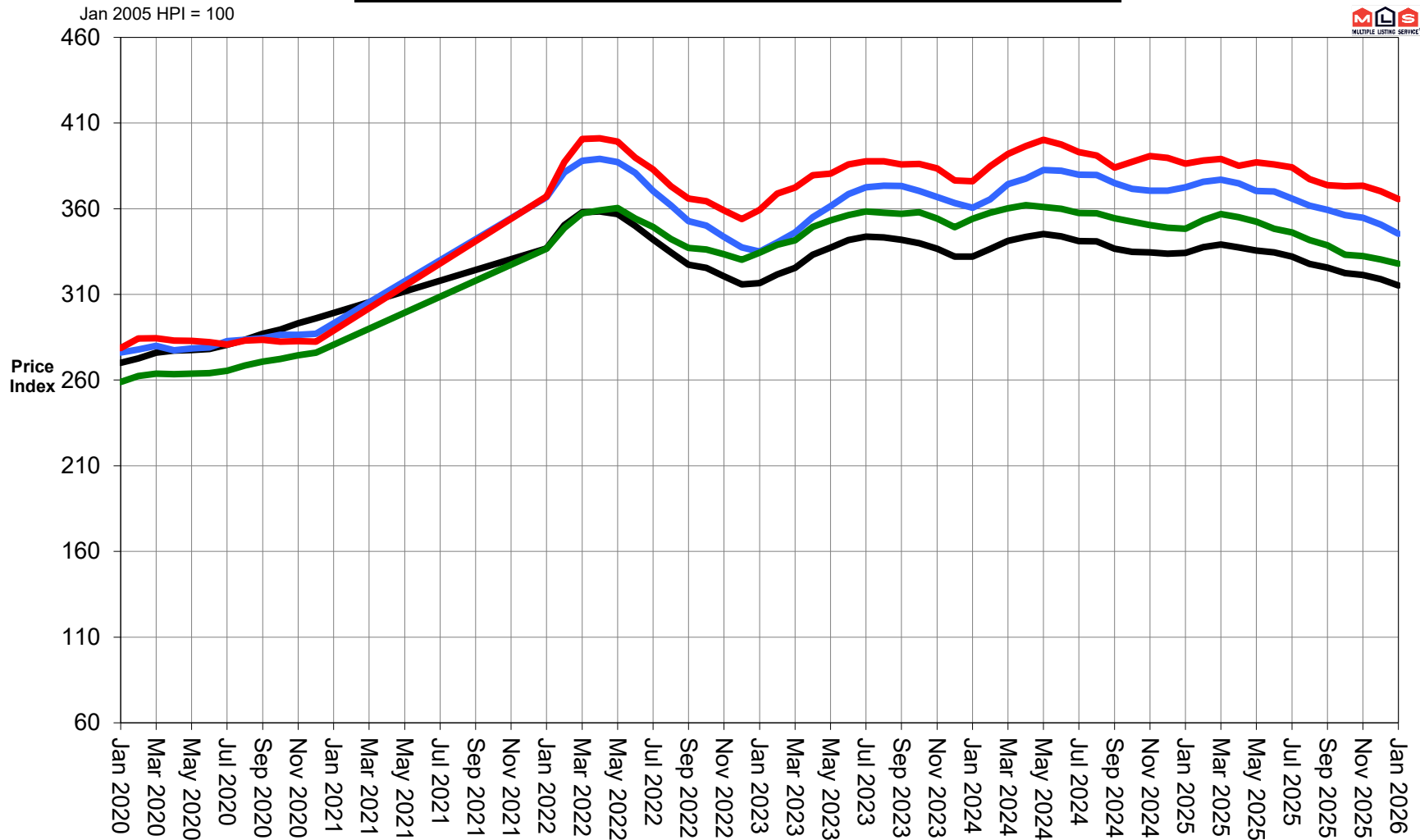
Townhome properties are similar to attached properties, a category that was used in the previous MLSLink HPI, but do not include duplexes.

Lower Mainland includes areas serviced by both Greater Vancouver Realtors & Fraser Valley Real Estate Board.

The above info is deemed reliable, but is not guaranteed. All dollar amounts in CDN.

### Greater Vancouver 5 Year Trend

Residential Detached Townhouse Apartment



# MLS® SALES Facts



January  
2026

		Bowen Island	Burnaby	Coquitlam	Delta - South	Islands - Gulf	Maple Ridge/Pitt Meadows	New Westminster	North Vancouver	Port Coquitlam	Port Moody/Belcarra	Richmond	Squamish	Sunshine Coast	Vancouver East	Vancouver West	West Vancouver/Howe Sound	Whistler/Pemberton	TOTALS
January 2026	Number of Sales	Detached: 1 Attached: 0 Apartment: 0	30	22	12	2	38	13	31	11	4	29	1	17	34	29	16	10	300
	Median Selling Price	Detached: n/a Attached: n/a Apartment: n/a	\$1,852,500	\$1,585,000	n/a	n/a	\$1,052,500	n/a	\$1,850,000	n/a	n/a	\$1,898,000	n/a	n/a	\$1,660,000	\$3,040,000	n/a	n/a	n/a
			\$1,015,000	\$1,203,000	n/a	n/a	\$730,000	n/a	\$1,384,500	n/a	n/a	\$1,018,500	n/a	n/a	\$1,400,000	\$1,657,143	n/a	n/a	n/a
December 2025	Number of Sales	Detached: 5 Attached: 0 Apartment: 0	40	50	15	2	47	11	25	17	11	45	12	29	51	49	16	6	431
	Median Selling Price	Detached: n/a Attached: n/a Apartment: n/a	\$1,992,500	\$1,650,000	n/a	n/a	\$1,180,000	n/a	\$2,000,000	n/a	n/a	\$2,145,000	n/a	\$835,000	\$1,665,000	\$2,982,500	n/a	n/a	n/a
			\$1,185,000	\$1,057,000	n/a	n/a	\$775,000	n/a	\$1,269,950	n/a	n/a	\$975,000	n/a	n/a	\$1,424,000	\$1,724,000	n/a	n/a	n/a
January 2025	Number of Sales	Detached: 2 Attached: 0 Apartment: 0	32	33	18	1	52	3	42	16	8	50	4	29	31	35	16	8	380
	Median Selling Price	Detached: n/a Attached: n/a Apartment: n/a	\$2,339,000	\$1,705,000	n/a	n/a	\$1,259,250	n/a	\$2,239,000	n/a	n/a	\$1,896,500	n/a	\$895,000	\$1,851,000	\$3,200,000	n/a	n/a	n/a
			n/a	\$1,222,500	n/a	n/a	\$830,000	n/a	\$1,381,950	n/a	n/a	\$1,169,450	n/a	n/a	\$1,490,000	\$1,569,000	n/a	n/a	n/a
Jan. - Jan. 2026 Year-to-date	Number of Sales	Detached: 1 Attached: 0 Apartment: 0	30	22	12	2	38	13	31	11	4	29	1	17	34	29	16	10	300
	Median Selling Price	Detached: n/a Attached: n/a Apartment: n/a	\$1,852,500	\$1,585,000	n/a	n/a	\$1,052,500	n/a	\$1,850,000	n/a	n/a	\$1,898,000	n/a	n/a	\$1,660,000	\$3,040,000	n/a	n/a	n/a
			\$1,015,000	\$1,203,000	n/a	n/a	\$730,000	n/a	\$1,384,500	n/a	n/a	\$1,018,500	n/a	n/a	\$1,400,000	\$1,657,143	n/a	n/a	n/a
Jan. - Jan. 2025 Year-to-date	Number of Sales	Detached: 2 Attached: 0 Apartment: 0	32	33	18	1	52	3	42	16	8	50	4	29	31	35	16	8	380
	Median Selling Price	Detached: n/a Attached: n/a Apartment: n/a	\$2,339,000	\$1,705,000	n/a	n/a	\$1,259,250	n/a	\$2,239,000	n/a	n/a	\$1,896,500	n/a	\$895,000	\$1,851,000	\$3,200,000	n/a	n/a	n/a
			n/a	\$1,222,500	n/a	n/a	\$830,000	n/a	\$1,381,950	n/a	n/a	\$1,169,450	n/a	n/a	\$1,490,000	\$1,569,000	n/a	n/a	n/a

Note: Median Selling Prices are not reported for areas with less than 20 sales or for the Gulf Islands



# MLS® LISTINGS Facts



January  
2026

		Bowen Island	Burnaby	Coquitlam	Delta - South	Islands - Gulf	Maple Ridge/Pitt Meadows	New Westminster	North Vancouver	Port Coquitlam	Port Moody/Belcarra	Richmond	Squamish	Sunshine Coast	Vancouver East	Vancouver West	West Vancouver/Howe Sound	Whistler/Pemberton	TOTALS	
January 2026	Number of Listings	Detached	8	147	116	84	4	173	37	122	48	34	164	25	87	165	189	158	22	1,583
		Attached	1	116	104	43	0	82	26	99	57	22	128	30	14	229	184	11	34	1,180
		Apartment	1	390	221	33	0	63	155	179	59	86	301	29	9	254	543	41	30	2,394
January 2026	% Sales to Listings	Detached	13%	20%	19%	14%	50%	22%	35%	25%	23%	12%	18%	4%	20%	21%	15%	10%	45%	n/a
		Attached	0%	24%	21%	12%	n/a	27%	8%	24%	11%	36%	20%	20%	29%	18%	20%	36%	35%	n/a
		Apartment	0%	25%	20%	21%	n/a	30%	21%	21%	19%	16%	25%	14%	44%	20%	23%	22%	73%	n/a
December 2025	Number of Listings	Detached	3	53	46	10	3	63	22	32	22	10	70	6	29	66	53	40	16	544
		Attached	0	37	36	8	0	23	5	21	9	13	36	7	6	73	57	6	17	354
		Apartment	0	161	87	16	0	22	48	56	26	30	151	12	6	75	206	13	41	950
December 2025	% Sales to Listings	Detached	167%	75%	109%	150%	67%	75%	50%	78%	77%	110%	64%	200%	100%	77%	92%	40%	38%	n/a
		Attached	n/a	95%	83%	150%	n/a	109%	40%	124%	144%	108%	89%	200%	33%	58%	63%	100%	82%	n/a
		Apartment	n/a	86%	79%	56%	n/a	100%	113%	129%	50%	83%	58%	33%	50%	87%	98%	46%	54%	n/a
January 2025	Number of Listings	Detached	8	106	123	86	7	208	30	128	67	40	171	23	101	160	183	128	25	1,594
		Attached	0	82	99	0	1	88	24	77	19	23	115	28	11	217	188	23	23	1,018
		Apartment	0	492	264	52	0	97	173	217	61	46	323	34	10	265	789	39	43	2,905
January 2025	% Sales to Listings	Detached	25%	30%	27%	21%	14%	25%	10%	33%	24%	20%	29%	17%	29%	19%	19%	13%	32%	n/a
		Attached	n/a	21%	29%	n/a	0%	40%	21%	31%	89%	30%	45%	39%	27%	25%	20%	13%	70%	n/a
		Apartment	n/a	27%	35%	31%	n/a	22%	31%	38%	52%	37%	32%	35%	20%	27%	23%	28%	44%	n/a
Jan. - Jan. 2026 Year-to-date*	Number of Listings	Detached	8	147	116	84	4	173	37	122	48	34	164	25	87	165	189	158	22	1,583
		Attached	1	116	104	43	0	82	26	99	57	22	128	30	14	229	184	11	34	1,180
		Apartment	1	390	221	33	0	63	155	179	59	86	301	29	9	254	543	41	30	2,394
Jan. - Jan. 2026 Year-to-date*	% Sales to Listings	Detached	13%	20%	19%	14%	50%	22%	35%	25%	23%	12%	18%	4%	20%	21%	15%	10%	45%	n/a
		Attached	0%	24%	21%	12%	n/a	27%	8%	24%	11%	36%	20%	20%	29%	18%	20%	36%	35%	n/a
		Apartment	0%	25%	20%	21%	n/a	30%	21%	21%	19%	16%	25%	14%	44%	20%	23%	22%	73%	n/a
Jan. - Jan. 2025 Year-to-date*	Number of Listings	Detached	8	106	123	86	7	208	30	128	67	40	171	23	101	160	183	128	25	1,594
		Attached	0	82	99	47	1	88	24	77	19	23	115	28	11	217	188	23	23	1,065
		Apartment	0	492	264	52	0	97	173	217	61	46	323	34	10	265	789	39	43	2,905
Jan. - Jan. 2025 Year-to-date*	% Sales to Listings	Detached	25%	30%	27%	21%	14%	25%	10%	33%	24%	20%	29%	17%	29%	19%	19%	13%	32%	n/a
		Attached	n/a	21%	29%	19%	0%	40%	21%	31%	89%	30%	45%	39%	27%	25%	20%	13%	70%	n/a
		Apartment	n/a	27%	35%	31%	n/a	22%	31%	38%	52%	37%	32%	35%	20%	27%	23%	28%	44%	n/a

\* Year-to-date listings represent a cumulative total of listings rather than total active listings.

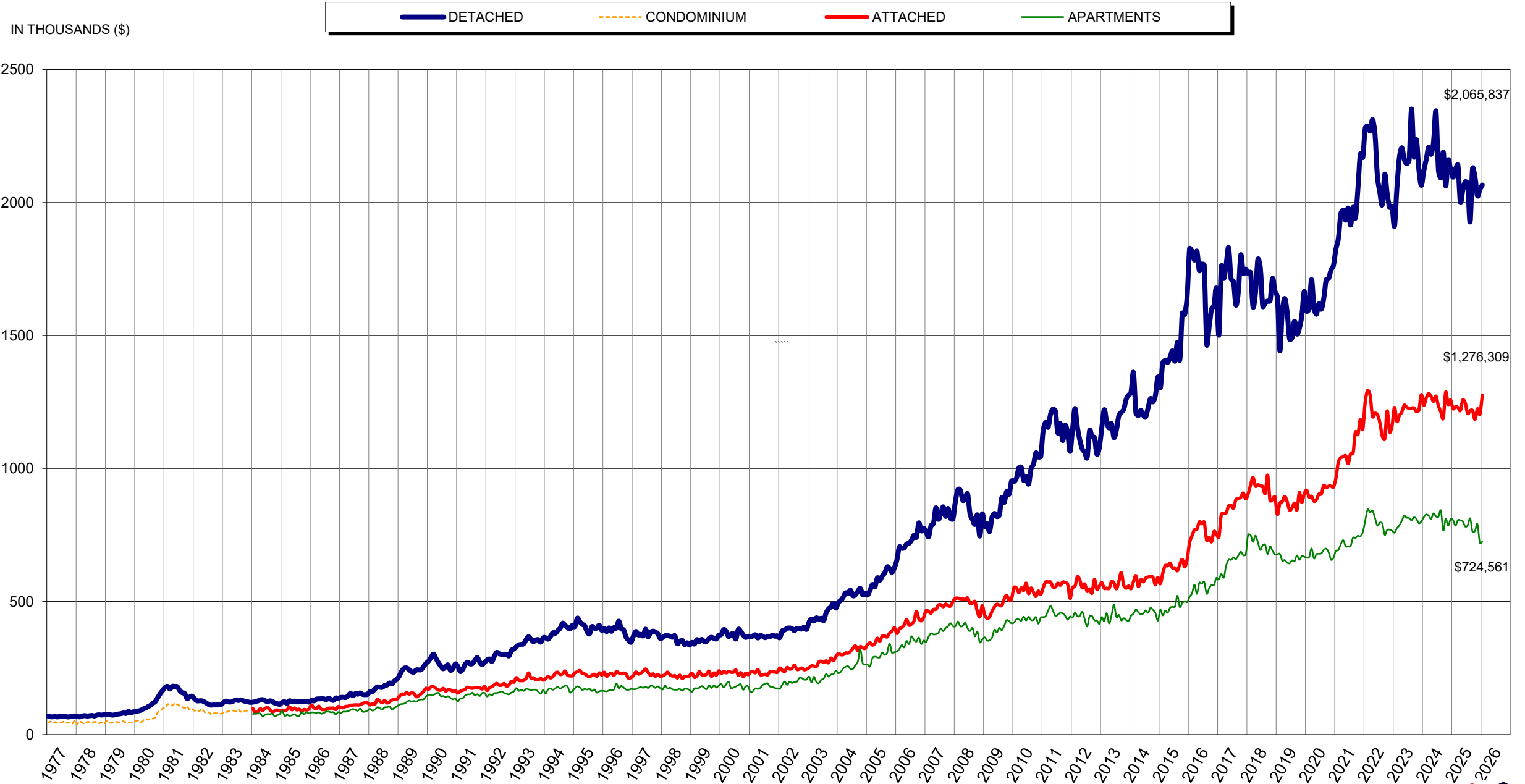


# Listing & Sales Activity Summary

	<u>Listings</u>				<u>Sales</u>						
	1 Jan 2025	2 Dec 2025	3 Jan 2026	Col. 2 & 3 Percentage Variance	5 Jan 2025	6 Dec 2025	7 Jan 2026	Col. 6 & 7 Percentage Variance	9 Nov 2024 - Jan 2025	10 Nov 2025 - Jan 2026	Col. 9 & 10 Percentage Variance
<b>BOWEN ISLAND</b>				<b>%</b>				<b>%</b>			<b>%</b>
DETACHED	8	3	8	166.7	2	5	1	-80.0	11	12	9.1
ATTACHED	0	0	1	100.0	0	0	0	0.0	0	0	0.0
APARTMENTS	0	0	1	100.0	0	0	0	0.0	0	0	0.0
<b>BURNABY</b>				<b>%</b>				<b>%</b>			<b>%</b>
DETACHED	106	53	147	177.4	32	40	30	-25.0	134	106	-20.9
ATTACHED	82	37	116	213.5	17	35	28	-20.0	118	98	-16.9
APARTMENTS	492	161	390	142.2	131	138	98	-29.0	489	370	-24.3
<b>COQUITLAM</b>											
DETACHED	123	46	116	152.2	33	50	22	-56.0	118	119	0.8
ATTACHED	99	36	104	188.9	29	30	22	-26.7	84	75	-10.7
APARTMENTS	264	87	221	154.0	93	69	45	-34.8	252	190	-24.6
<b>DELTA</b>											
DETACHED	86	10	84	740.0	18	15	12	-20.0	68	55	-19.1
ATTACHED		8	43	437.5	9	12	5	-58.3	35	34	-2.9
APARTMENTS	52	16	33	106.3	16	9	7	-22.2	34	28	-17.6
<b>ISLANDS - GULF</b>											
DETACHED	7	3	4	33.3	1	2	2	0.0	9	9	0.0
ATTACHED	1	0	0	0.0	0	0	0	0.0	0	0	0.0
APARTMENTS	0	0	0	0.0	0	0	0	0.0	0	0	0.0
<b>MAPLE RIDGE/PITT MEADOWS</b>											
DETACHED	208	63	173	174.6	52	47	38	-19.1	188	154	-18.1
ATTACHED	88	23	82	256.5	35	25	22	-12.0	132	76	-42.4
APARTMENTS	97	22	63	186.4	21	22	19	-13.6	74	71	-4.1
<b>NEW WESTMINSTER</b>											
DETACHED	30	22	37	68.2	3	11	13	18.2	27	33	22.2
ATTACHED	24	5	26	420.0	5	2	2	0.0	29	18	-37.9
APARTMENTS	173	48	155	222.9	53	54	33	-38.9	194	129	-33.5
<b>NORTH VANCOUVER</b>											
DETACHED	128	32	122	281.3	42	25	31	24.0	143	112	-21.7
ATTACHED	77	21	99	371.4	24	26	24	-7.7	85	76	-10.6
APARTMENTS	217	56	179	219.6	82	72	37	-48.6	231	184	-20.3
<b>PORT COQUITLAM</b>											
DETACHED	67	22	48	118.2	16	17	11	-35.3	61	48	-21.3
ATTACHED	19	9	57	533.3	17	13	6	-53.8	56	39	-30.4
APARTMENTS	61	26	59	126.9	32	13	11	-15.4	75	45	-40.0
<b>PORT MOODY/BELCARRA</b>											
DETACHED	40	10	34	240.0	8	11	4	-63.6	35	22	-37.1
ATTACHED	23	13	22	69.2	7	14	8	-42.9	27	35	29.6
APARTMENTS	46	30	86	186.7	17	25	14	-44.0	61	65	6.6
<b>RICHMOND</b>											
DETACHED	171	70	164	134.3	50	45	29	-35.6	169	126	-25.4
ATTACHED	115	36	128	255.6	52	32	26	-18.8	157	93	-40.8
APARTMENTS	323	151	301	99.3	104	88	74	-15.9	344	265	-23.0
<b>SQUAMISH</b>											
DETACHED	23	6	25	316.7	4	12	1	-91.7	32	26	-18.8
ATTACHED	28	7	30	328.6	11	14	6	-57.1	32	39	21.9
APARTMENTS	34	12	29	141.7	12	4	4	0.0	39	19	-51.3
<b>SUNSHINE COAST</b>											
DETACHED	101	29	87	200.0	29	29	17	-41.4	95	85	-10.5
ATTACHED	11	6	14	133.3	3	2	4	100.0	9	9	0.0
APARTMENTS	10	6	9	50.0	2	3	4	33.3	9	12	33.3
<b>VANCOUVER EAST</b>											
DETACHED	160	66	165	150.0	31	51	34	-33.3	164	135	-17.7
ATTACHED	217	73	229	213.7	55	42	41	-2.4	178	145	-18.5
APARTMENTS	265	75	254	238.7	71	65	52	-20.0	280	215	-23.2
<b>VANCOUVER WEST</b>											
DETACHED	183	53	189	256.6	35	49	29	-40.8	147	137	-6.8
ATTACHED	188	57	184	222.8	38	36	36	0.0	147	115	-21.8
APARTMENTS	789	206	543	163.6	182	201	125	-37.8	651	586	-10.0
<b>WEST VANCOUVER/HOWE SOUND</b>											
DETACHED	128	40	158	295.0	16	16	16	0.0	73	66	-9.6
ATTACHED	23	6	11	83.3	3	6	4	-33.3	8	11	37.5
APARTMENTS	39	13	41	215.4	11	6	9	50.0	33	33	0.0
<b>WHISTLER/PEMBERTON</b>											
DETACHED	25	16	22	37.5	8	6	10	66.7	26	27	3.8
ATTACHED	23	17	34	100.0	16	14	12	-14.3	46	36	-21.7
APARTMENTS	43	41	30	-26.8	19	22	22	0.0	60	78	30.0
<b>GRAND TOTALS</b>											
DETACHED	<b>1594</b>	<b>544</b>	<b>1583</b>	<b>191.0</b>	<b>380</b>	<b>431</b>	<b>300</b>	<b>-30.4</b>	<b>1500</b>	<b>1272</b>	<b>-15.2</b>
ATTACHED	<b>1018</b>	<b>354</b>	<b>1180</b>	<b>233.3</b>	<b>321</b>	<b>303</b>	<b>246</b>	<b>-18.8</b>	<b>1143</b>	<b>899</b>	<b>-21.3</b>
APARTMENTS	<b>2905</b>	<b>950</b>	<b>2394</b>	<b>152.0</b>	<b>846</b>	<b>791</b>	<b>554</b>	<b>-30.0</b>	<b>2826</b>	<b>2290</b>	<b>-19.0</b>



### Residential Average Sale Prices - January 1977 to January 2026



NOTE: From 1977 - 1984 condominium averages were not separated into attached & apartment.