



TOM HASSAN

604.809.9777 cell
tom@tomhassan.com
www.tomhassan.com

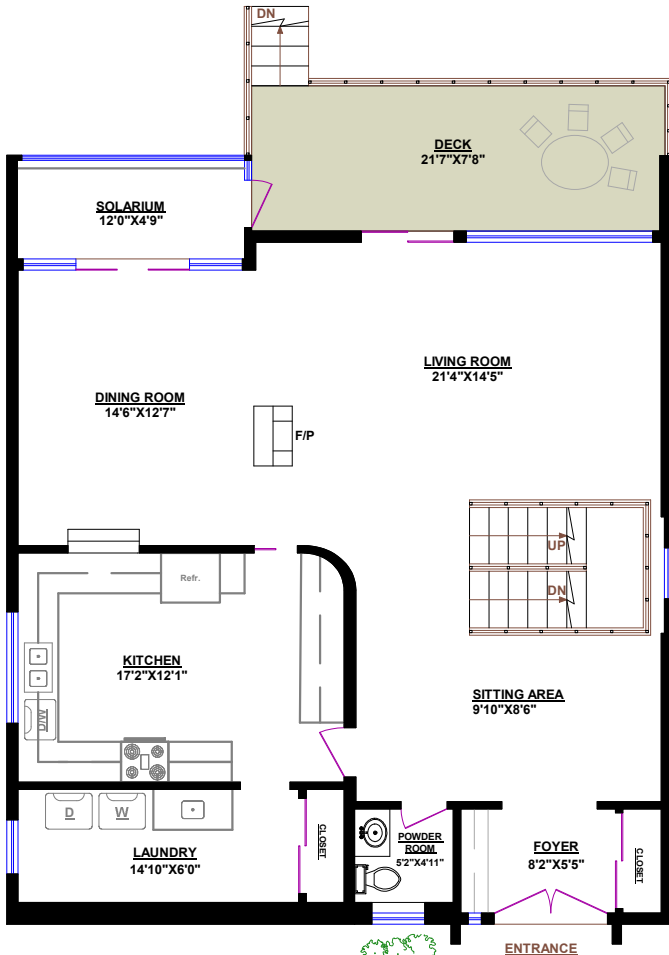


2397 Marine Drive,
West Vancouver V7V1K9

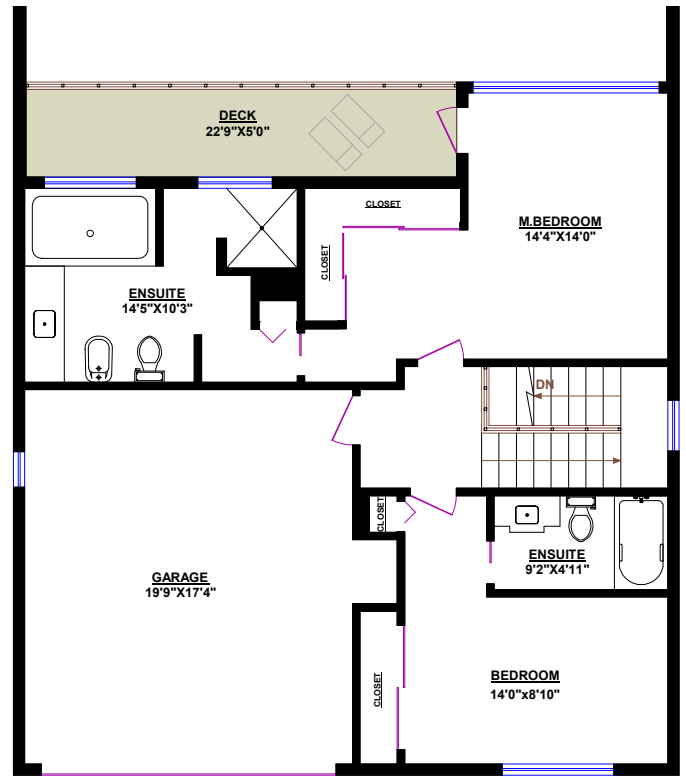
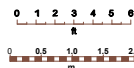
2390 NELSON AVENUE, WEST VANCOUVER

TOTALS	
Main Floor (finished):	1,340 sq.ft.
Upper Level (finished):	797 sq.ft.
Lower Level (finished):	1,288 sq.ft.
TOTAL FINISHED:	3,425 sq.ft.
TOTAL UNFINISHED:	0 sq.ft.
GRAND TOTAL :	3,425 sq.ft.

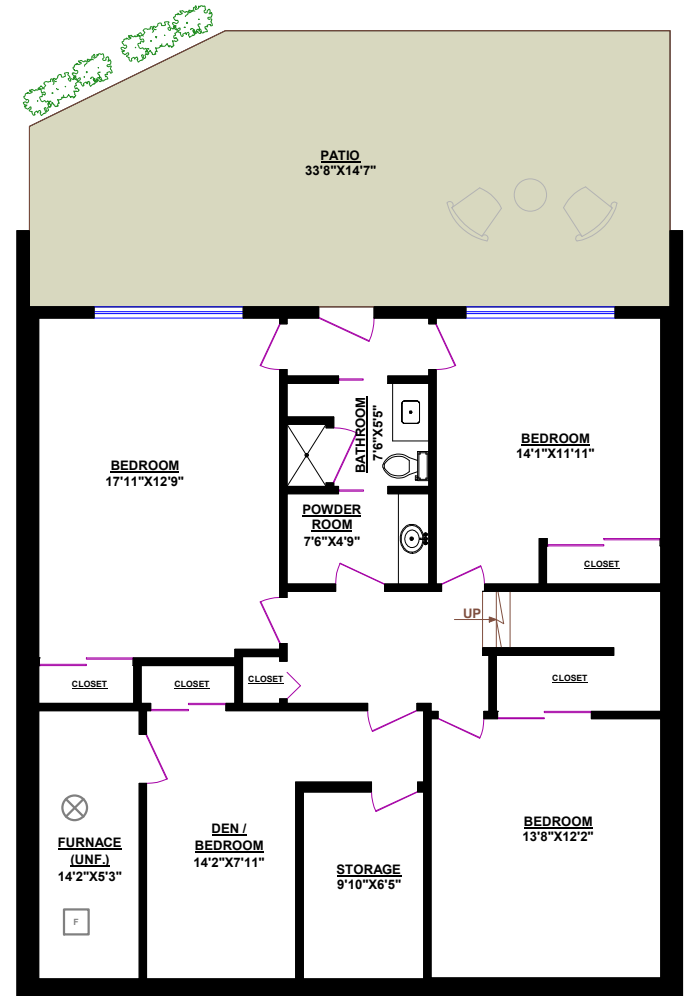
OTHER AREAS:	
Garage:	373 sq.ft.
Deck:	166 sq.ft.
Deck:	115 sq.ft.
Patio:	468 sq.ft.



MAIN FLOOR



UPPER LEVEL



LOWER LEVEL