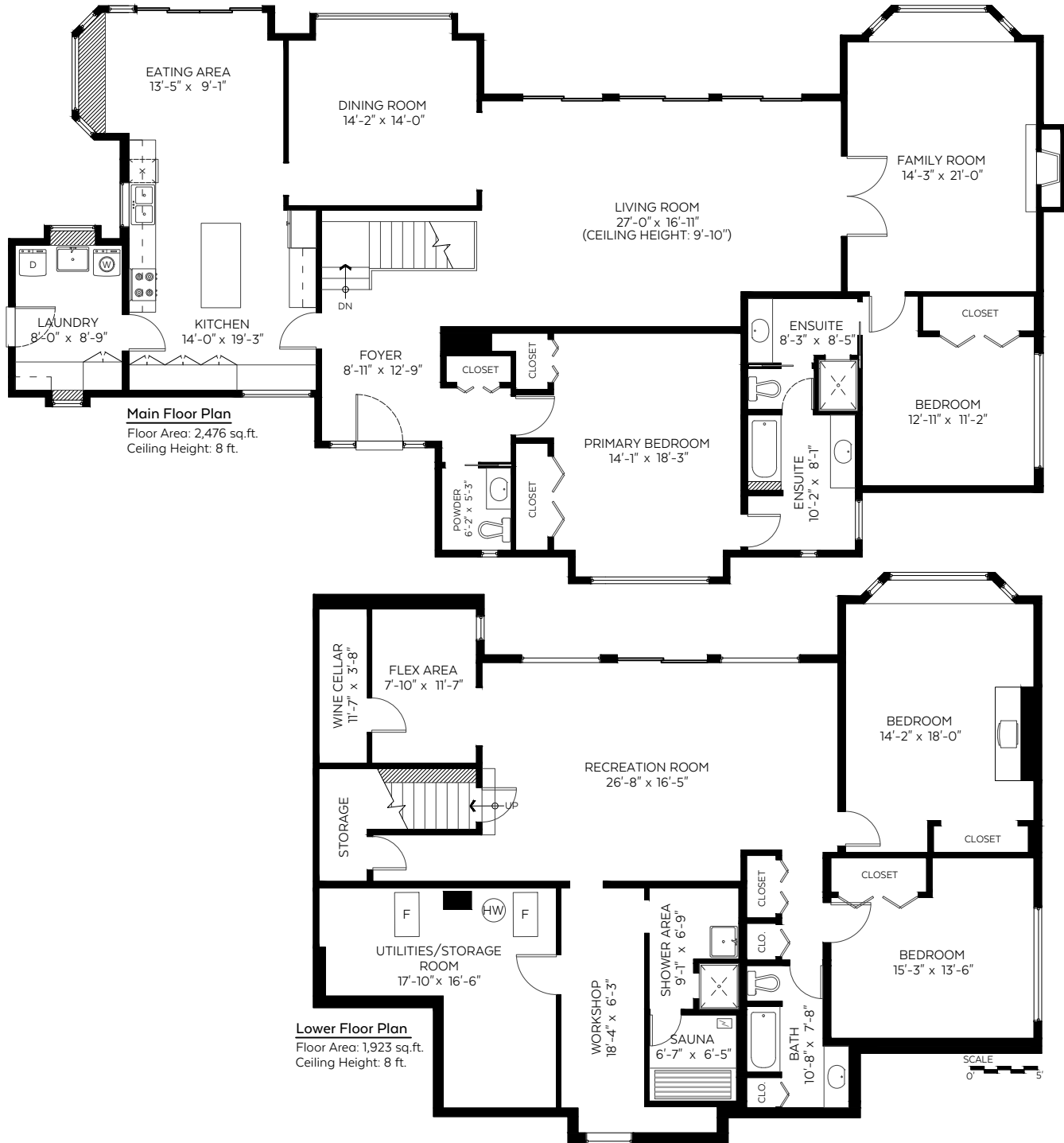


- TOM HASSAN -

604.809.9777 tom@tomhassan.com
 Royal LePage Sussex www.tomhassan.com

2090 26th Street,
 West Vancouver, B.C.

Main Floor: 2,476 sq.ft.
 Lower Floor: 1,923 sq.ft.
Total: 4,399 sq.ft.



Valid Until July 1, 2023

The floor plan is not suitable for architectural/construction and is covered under E&O. © Excelsior Measuring Inc. 2022. All rights reserved for Excelsior Measuring Inc. Users shall not publish and distribute such material (in whole or in part) and/or incorporate it in other works in any form.



Booked on
 the Pixilink App™

