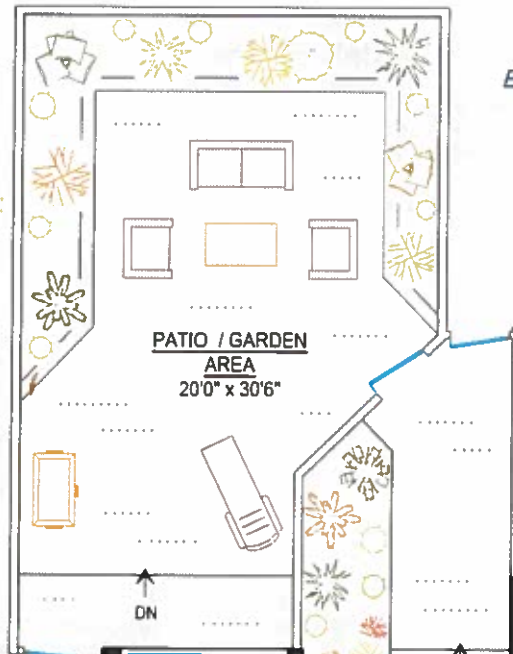


6453 Argyle Avenue
W. Vancouver, BC
 (Horseshoe Bay)

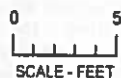
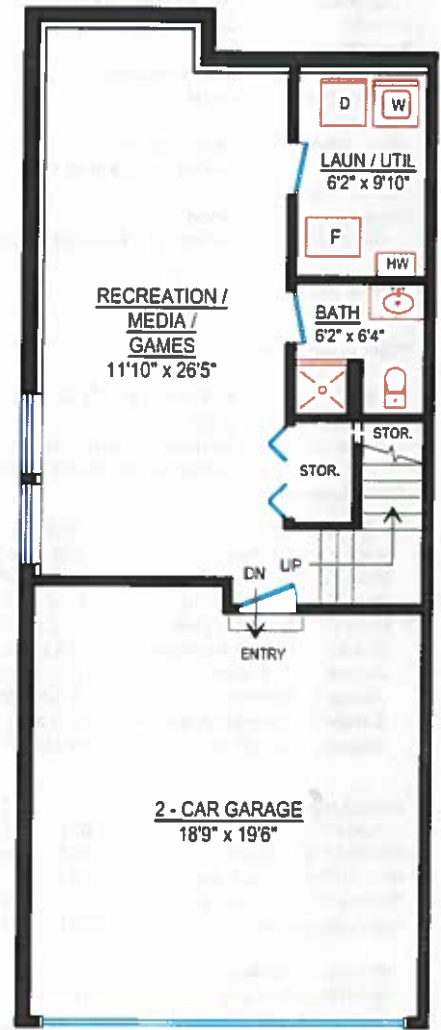
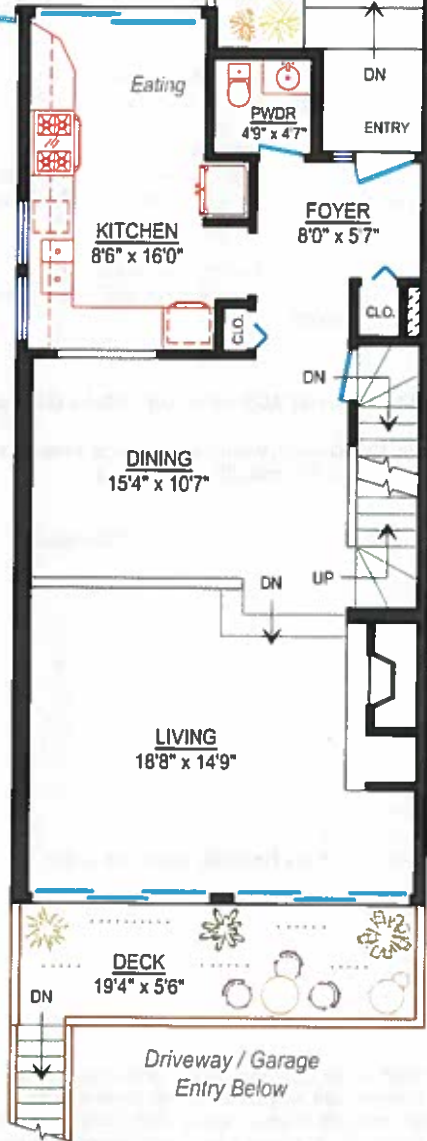
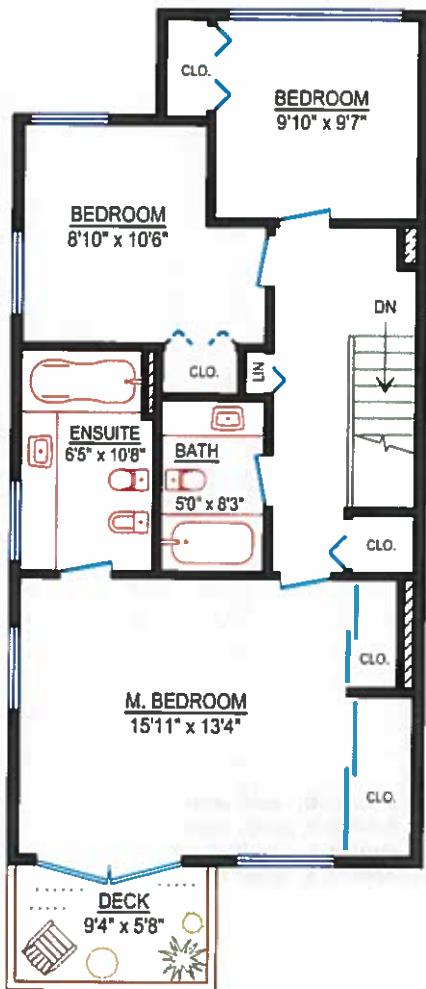
Main Level: 811 sq. ft.
 Upper Level: 788 sq. ft.
 * Lower Level: 538 sq. ft.
 * Total: 2137 sq. ft.
 * Includes low - level stor. under stairs

Other Areas: (not included in total)

Deck: (Main) 118 sq. ft.
 Deck: (Upper) 61 sq. ft.
 Garage: 409 sq. ft.
 Patio / Garden: 533 sq. ft.



Design Ideas 4u
 Floorplans - Design
 604-662-5914
 * room dimens om are approximate *



UPPER LEVEL
 Area: 788 sq. ft.

MAIN LEVEL
 Area: 811 sq. ft.

LOWER LEVEL
 Area: 538 sq. ft.