



TOM HASSAN

604.809.9777 cell
 tom@tomhassan.com
 www.tomhassan.com



2397 Marine Drive,
 West Vancouver V7V1K9

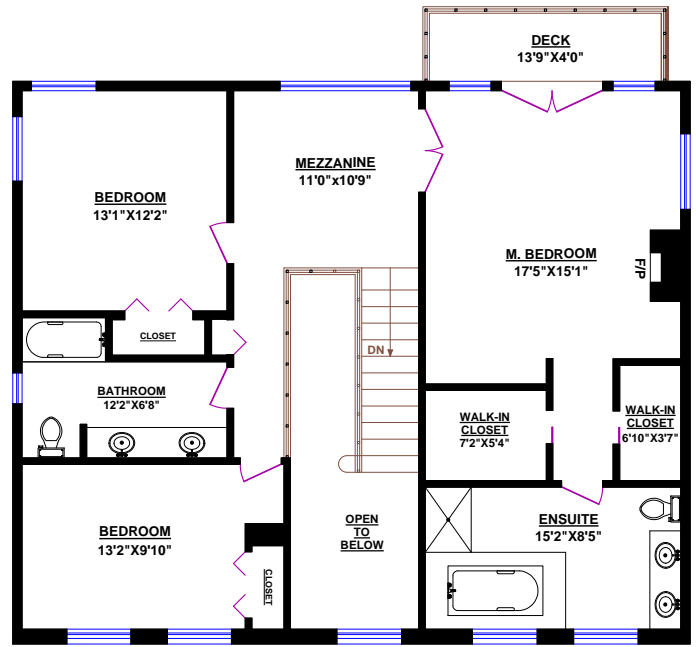
2358 PALMERSTON AVENUE, WEST VANCOUVER

TOTALS

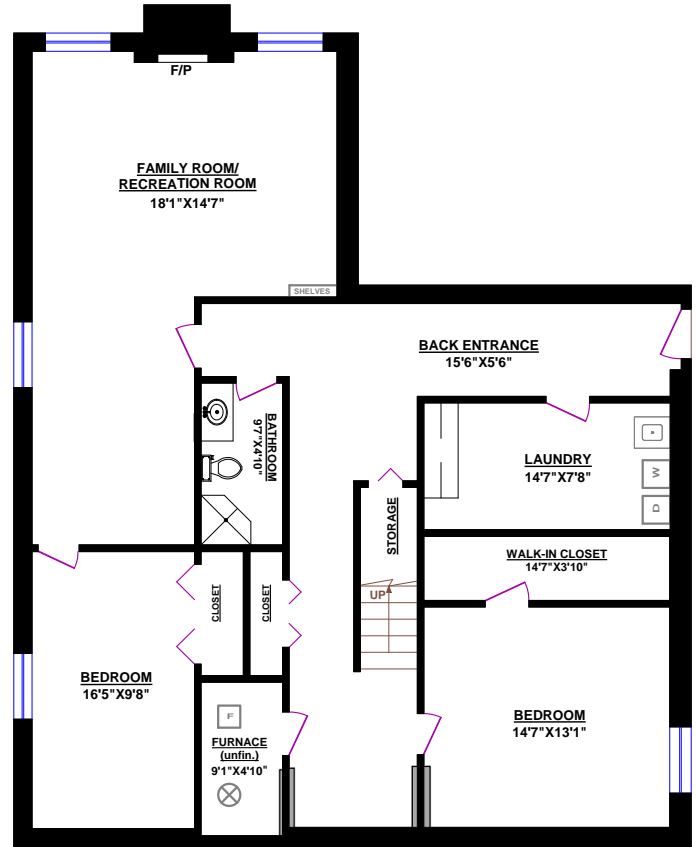
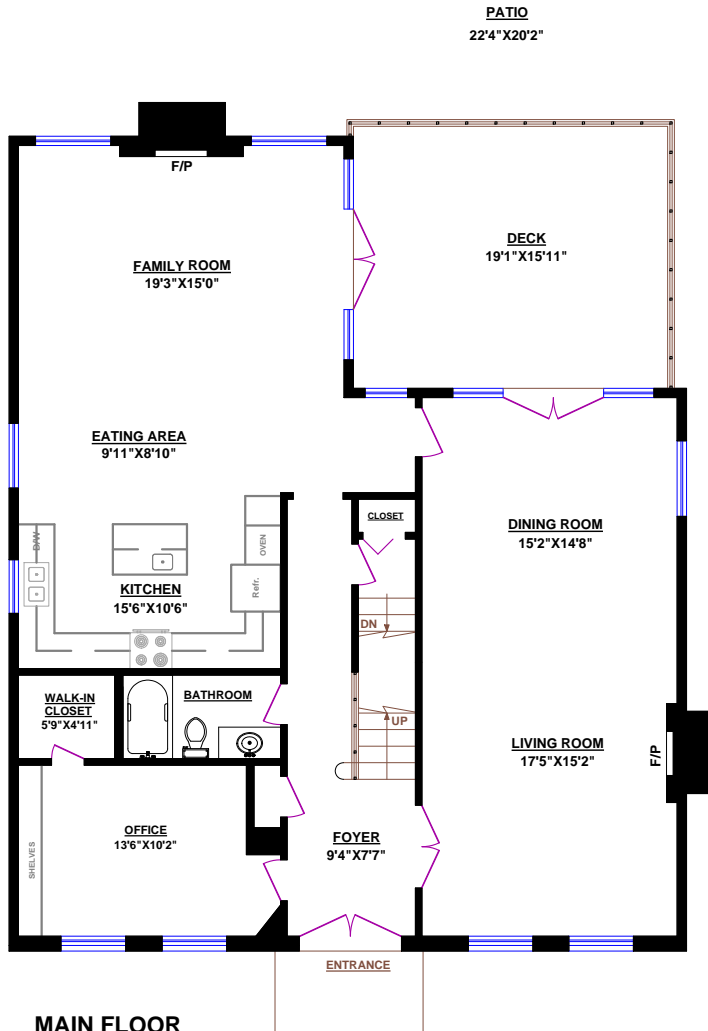
Main Floor (finished): 1,652 sq.ft.
 Upper Level (finished): 1,229 sq.ft.
 Lower Level (finished): 1,604 sq.ft.
 TOTAL FINISHED: 4,485 sq.ft.
 Lower Level (unfinished): 48 sq.ft.
 GRAND TOTAL: 4,533 sq.ft.

OTHER AREAS:

Garage: 439 sq.ft.
 Deck: 304 sq.ft.
 Deck: 56 sq.ft.
 Patio: 450 sq.ft.



UPPER LEVEL



LOWER LEVEL



0 1 2 3 4 5 6
 Feet
 © Vancouver Realty Support Group Inc., (604) 761-7919
 www.floorplansvancouver.com