

- TOM HASSAN -

604.809.9777 tom@tomhassan.com
 Royal LePage Sussex www.tomhassan.com

#212-1355 Bellevue Avenue,
 West Vancouver, B.C.

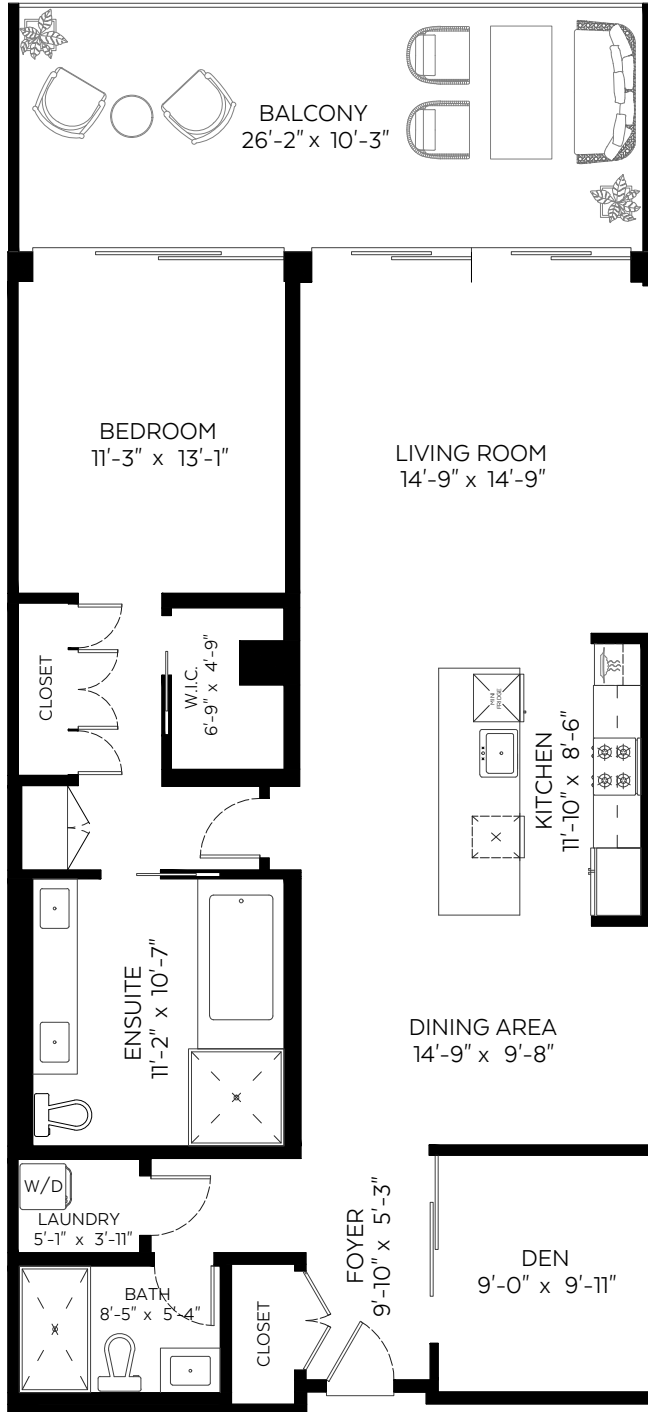
Main Floor*: 1,367 sq.ft.

Ceiling Height: 8'-3"

Auxiliary Area

Balcony: 269 sq.ft.

*AS PER STRATA PLAN



Measured on: December 02, 2020

The floor plan is not suitable for architectural/construction and is not covered under E&O. © Excelsior Measuring Inc. 2019. All rights reserved for Excelsior Measuring Inc. Users shall not publish and distribute such material (in whole or in part) and/or incorporate it in other works in any form.



Booked on
 the Pixilink App™

