



TOM HASSAN Prudential Sussex Realty



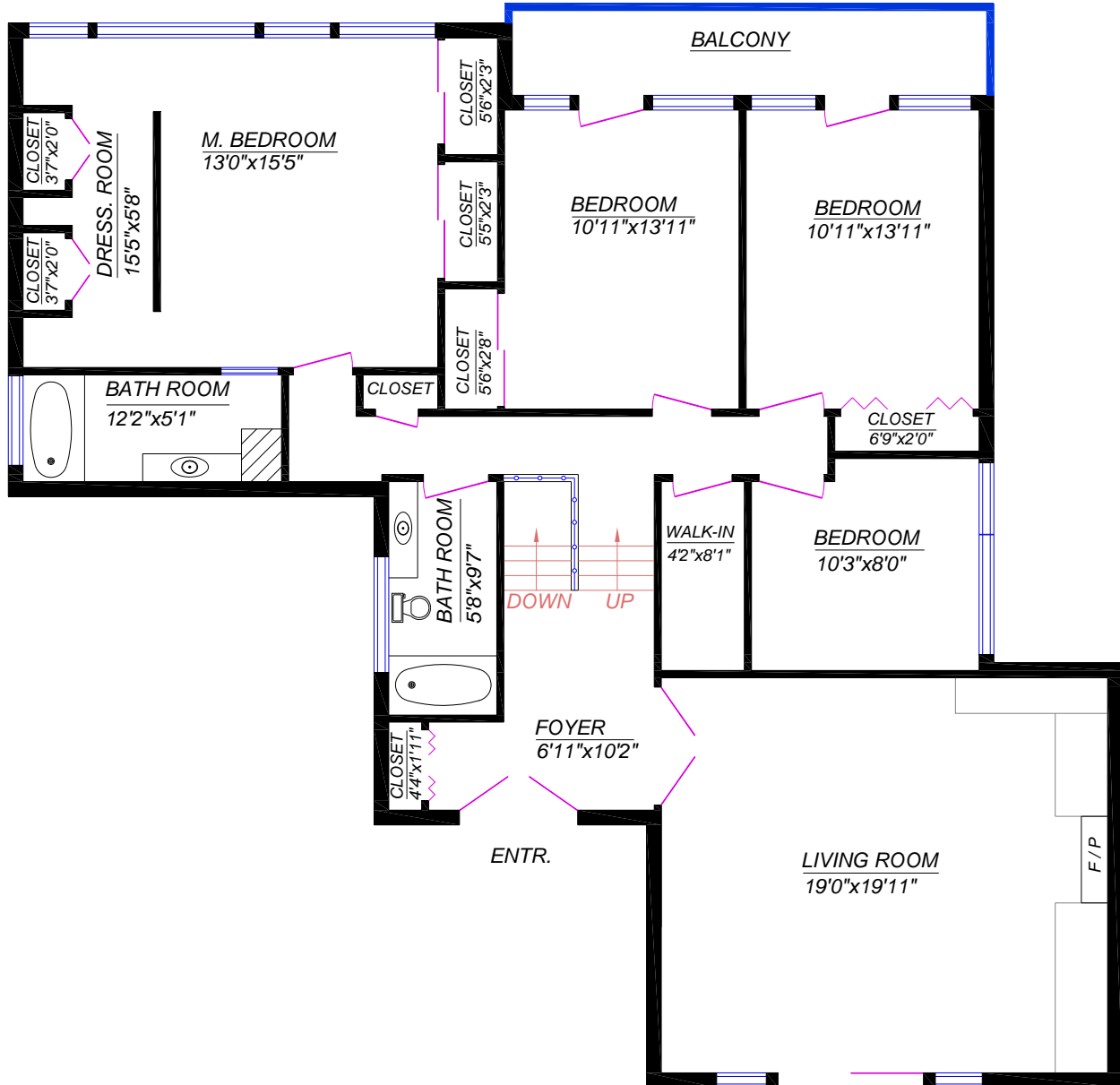
2397 Marine Drive
West Vancouver, BC V7V 1K9
phone:(604) 925-2911

1240 NEPAL CRES, WEST VANCOUVER

TOTALS (Finished)

Main Floor: 1,541 sq.ft.
Upper Level: 1,674 sq.ft.
TOTAL: 3,215 sq.ft.

Basement (unfin.): 458 sq.ft.
Balcony (on Upper): 106 sq.ft.



UPPER LEVEL

All measurements are approximate. Buyer to verify all measurements.

© Vancouver Realty Support Group, (604) 761-7919