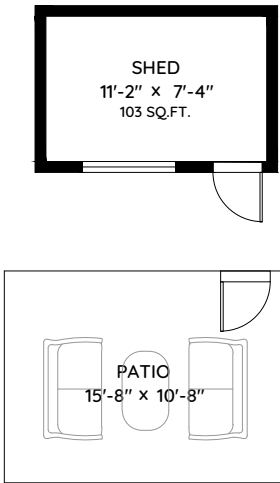
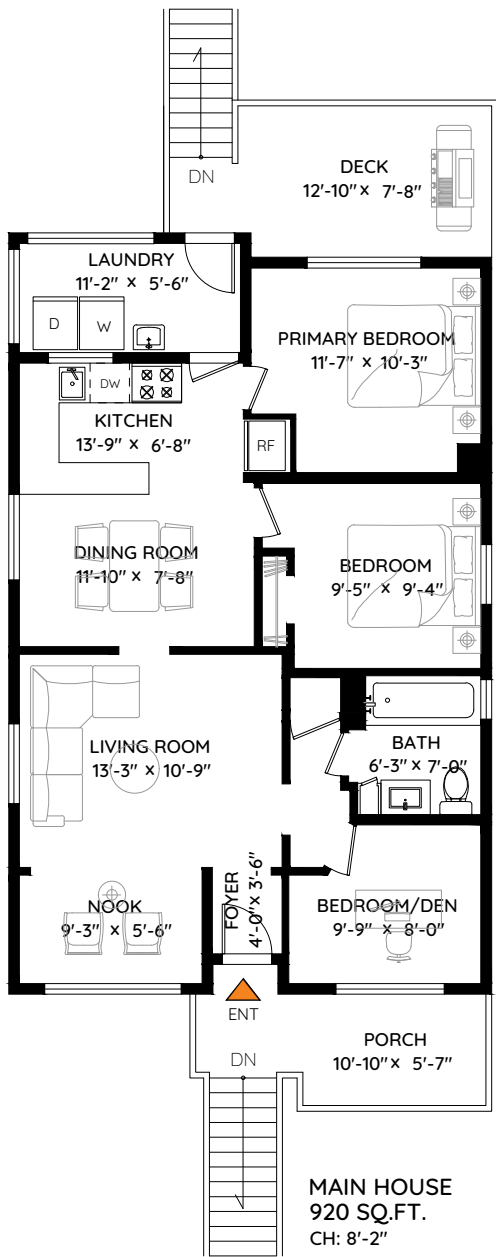
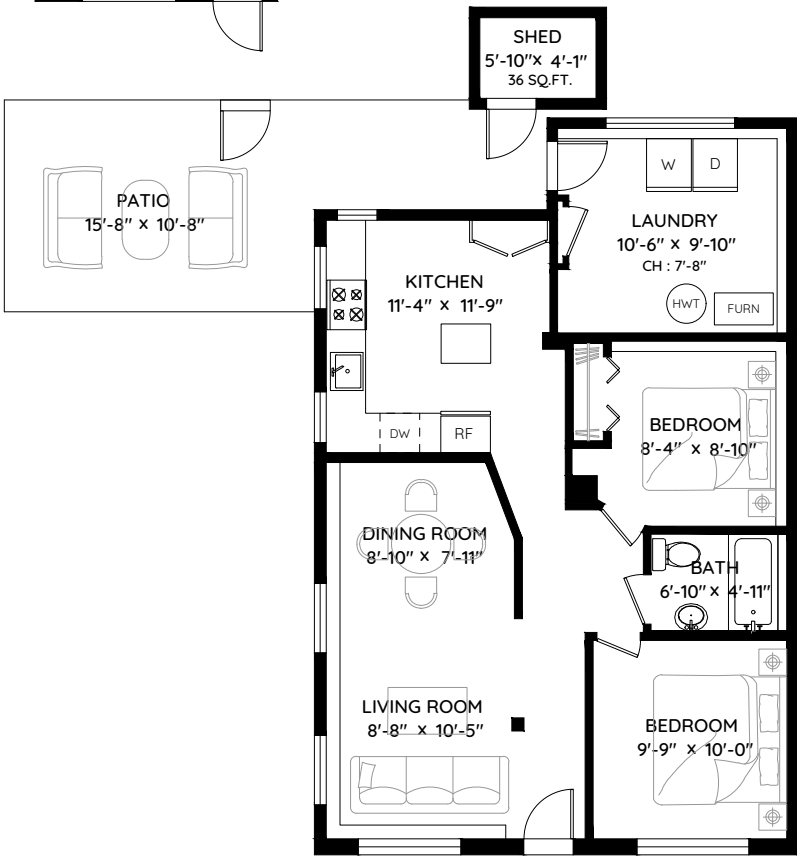


863 15TH STREET
WEST VANCOUVER, BC



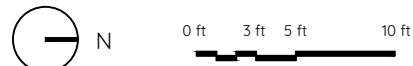
MAIN HOUSE	920 SQ.FT.	PORCH	122 SQ.FT.
CEILING HEIGHT	8'-2"	DECK	146 SQ.FT.
LOWER SUITE	855 SQ.FT.	SHED	139 SQ.FT.
TOTAL AREA	1,775 SQ.FT.	PATIO	231 SQ.FT.
		TOTAL	638 SQ.FT.



LOWER SUITE
855 SQ.FT.
CH: 7'-6"



Tom Hassan
Royal LePage Sussex
604 809 9777
tom@tomhassan.com



The floor plan and measurements are approximate, typically within +/- 2%. These are intended strictly for advertising purposes. They may encompass unfinished areas and are not intended for architectural or construction applications. There may be variances in the numbers if there were restrictions on property access or if taking precise measurements at the time of measuring isn't feasible. E&O insured.