

# - TOM HASSAN -

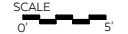
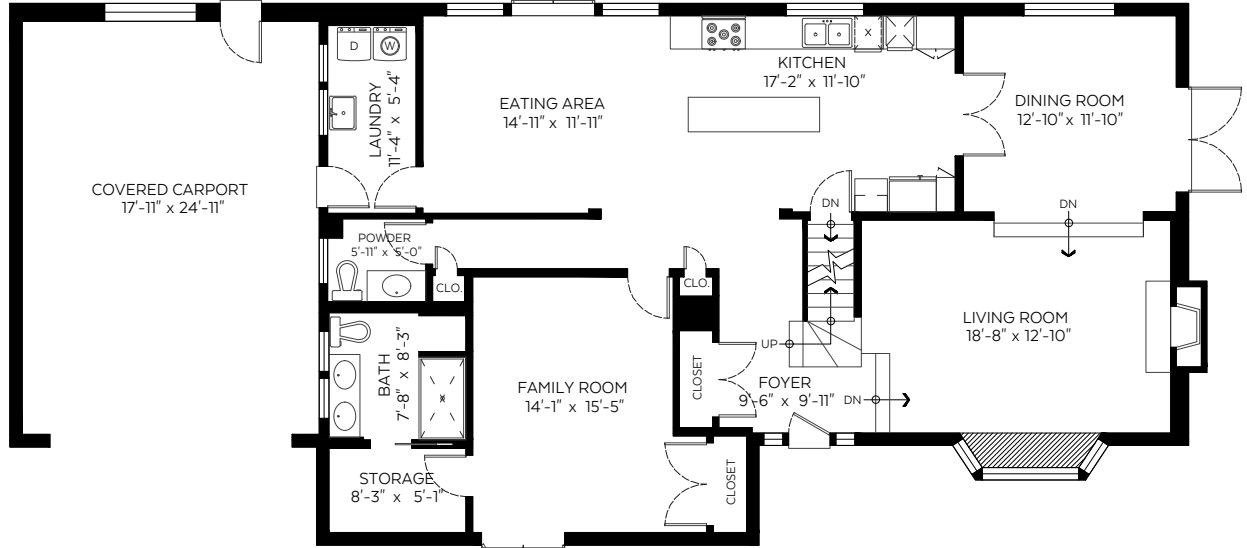
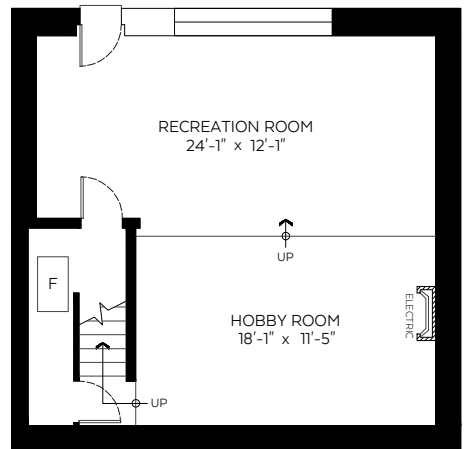
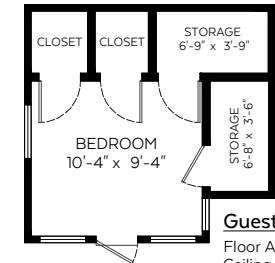
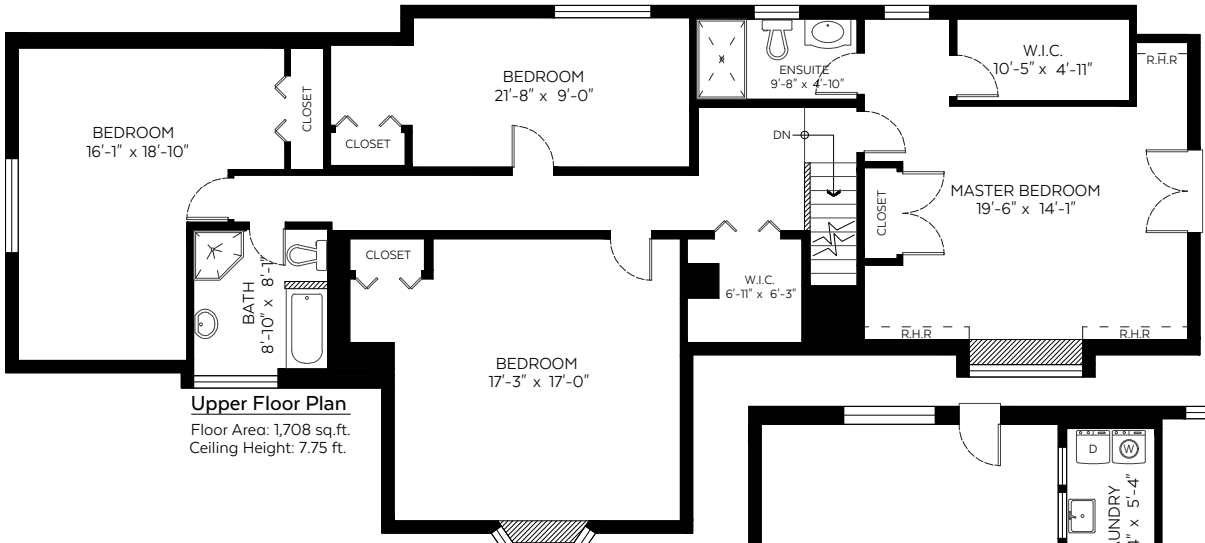
604.809.9777 tom@tomhassan.com  
 Royal LePage Sussex www.tomhassan.com

1725 Queens Avenue,  
 West Vancouver, B.C.

Main Floor: 1,558 sq.ft.  
 Upper Floor: 1,708 sq.ft.  
 Lower Floor: 722 sq.ft.  
**Total: 3,988 sq.ft.**  
 Guest House: 206 sq.ft.

### Auxiliary Area

Carport: 446 sq.ft.



Valid Until: June 19, 2022



Booked on  
 the Pixilink App™



The floor plan is not suitable for architectural/construction and is covered under E.O. © Excelsior Measuring Inc. 2019. All rights reserved for Excelsior Measuring Inc. Users shall not publish and distribute such material (in whole or in part) and/or incorporate it in other works in any form.