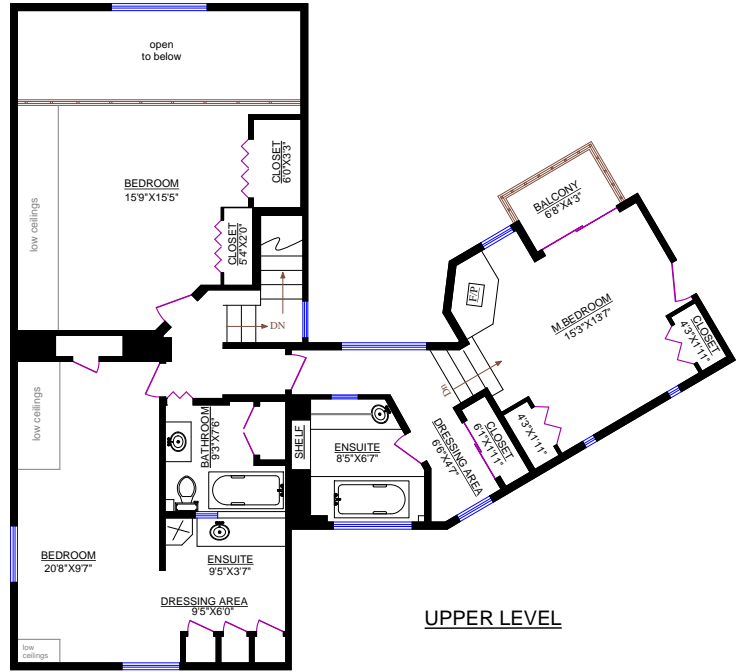
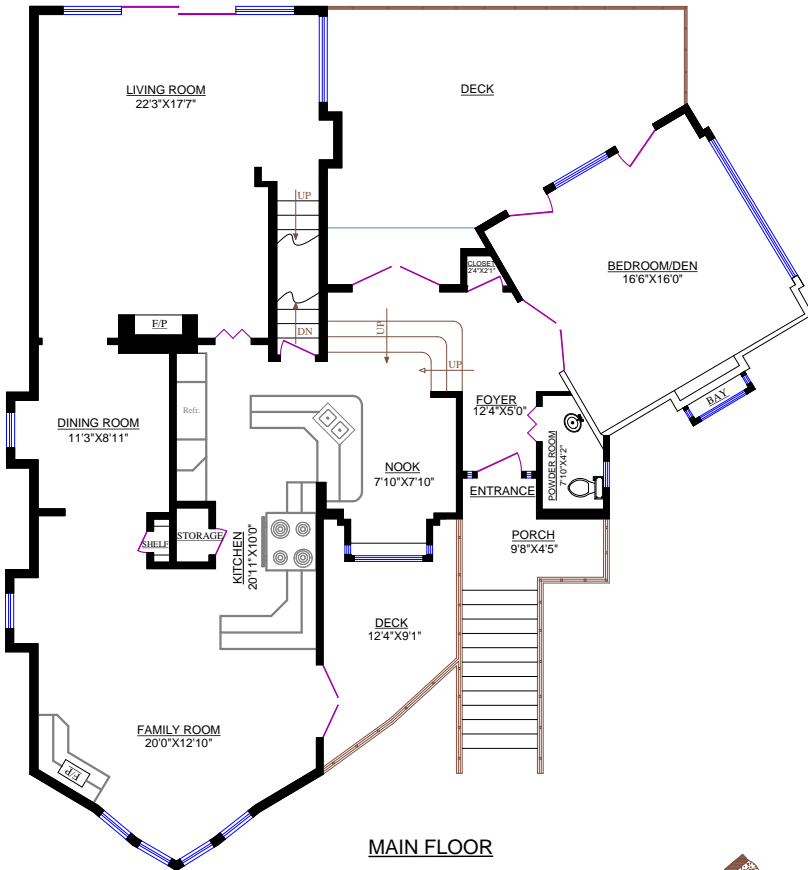


4055 MARINE DRIVE, WEST VANCOUVER

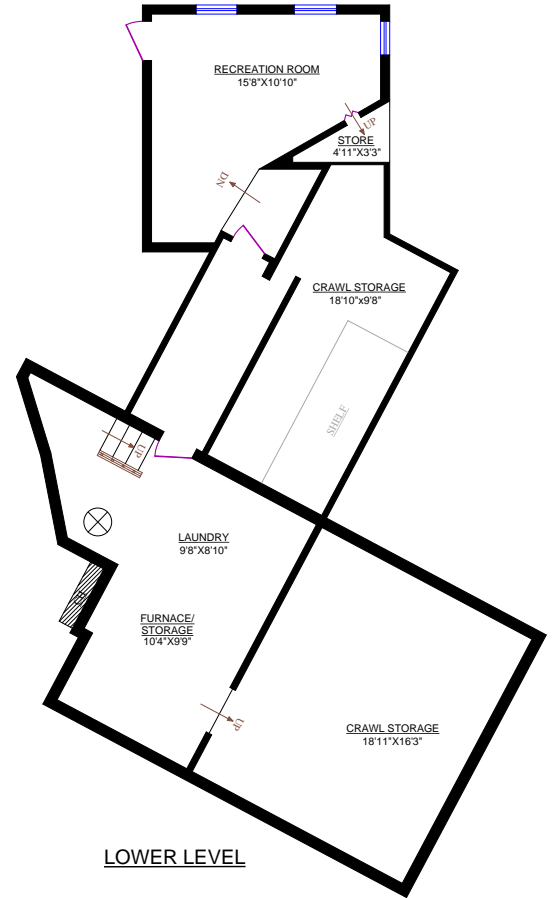
Main Floor:	1,709 sq.ft.	OTHER AREAS:	
Upper Level**:	1,064 sq.ft.	Crawl Storage:	326 sq.ft.
Lower Level*:	657 sq.ft.	Crawl Storage:	200 sq.ft.
TOTAL:	3,430 sq.ft.	Deck:	346 sq.ft.
		Deck:	121 sq.ft.
* Incl. Unfin. Area:	303 sq.ft.	Front Porch:	58 sq.ft.
** Does not include low ceilings areas	109 sq.ft.	Balcony:	28 sq.ft.
		Garage:	420 sq.ft.



UPPER LEVEL



MAIN FLOOR



LOWER LEVEL