

**1465 Jefferson Ave.
West Vancouver, BC**

ROYAL LEPAGE
Sussex



TOM HASSAN

604.809.9777

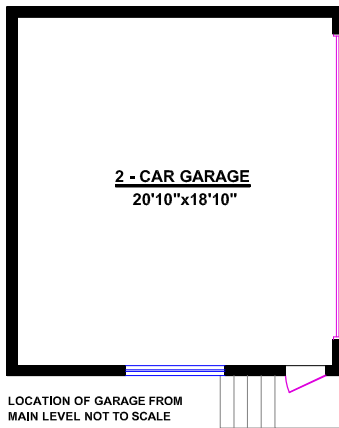
tom@tomhassan.com

www.tomhassan.com

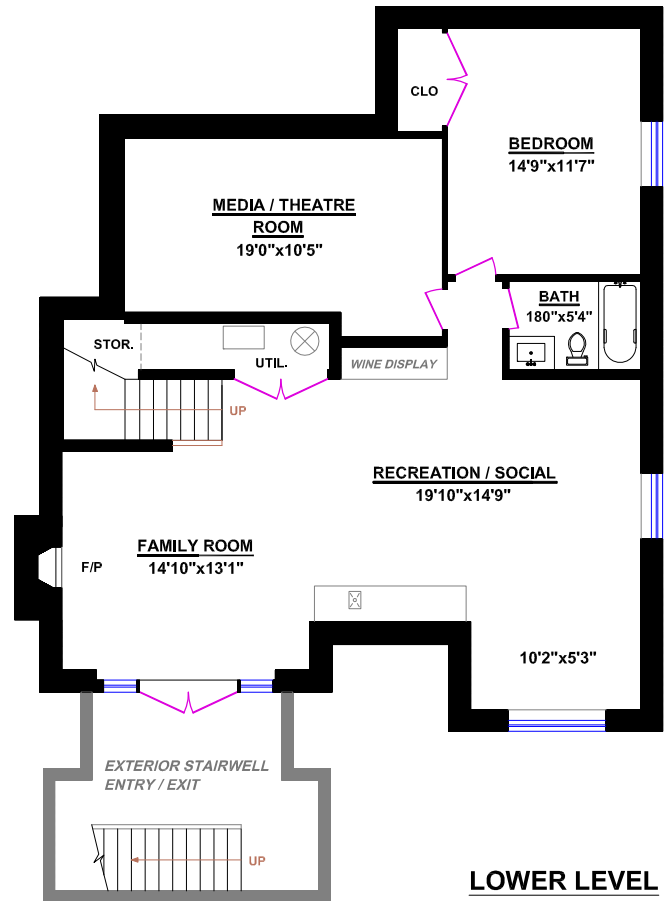
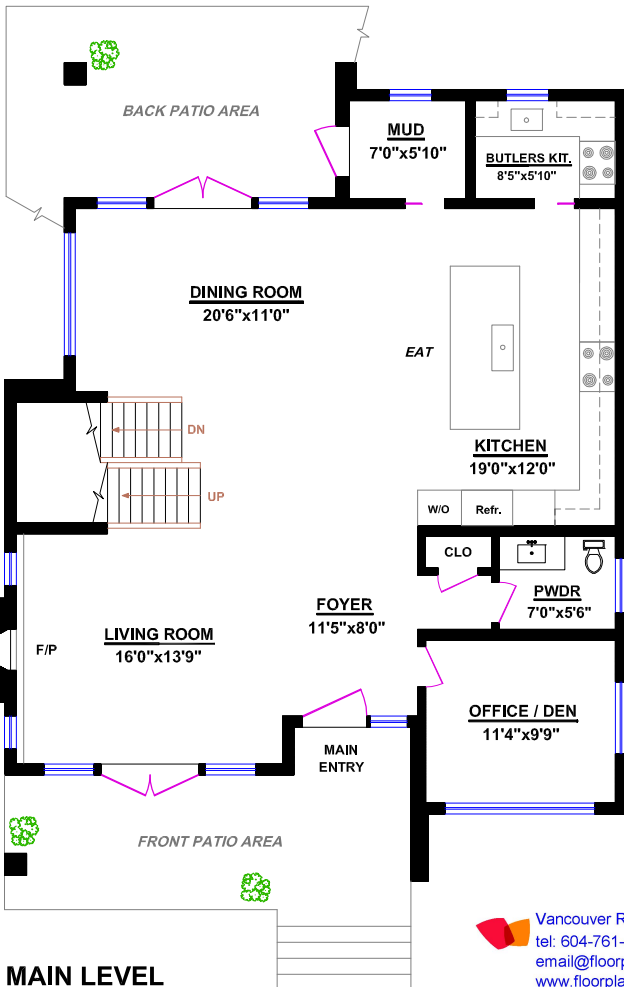
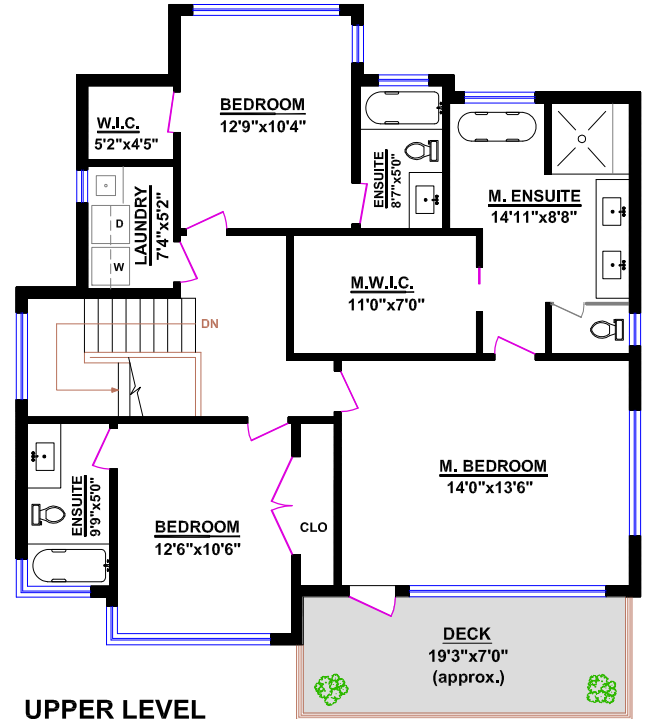
2397 Marine Drive
West Vancouver V7V 1K9

TOTALS	
Main Level (finished):	1366 sq.ft.
Upper Level (finished):	1188 sq.ft.
Lower Level (finished):	1364 sq.ft.
TOTAL FINISHED:	3918 sq.ft.
TOTAL UNFINISHED:	0 sq.ft.
GRAND TOTAL:	3918 sq.ft.

OTHER AREAS:	
Garage:	441 sq.ft.
Deck (Upper Level):	144 sq.ft.



LOCATION OF GARAGE FROM MAIN LEVEL NOT TO SCALE



Vancouver Realty Support Group Inc.
tel: 604-761-7919
email@floorplansvancouver.com
www.floorplansvancouver.com