

# - TOM HASSAN -

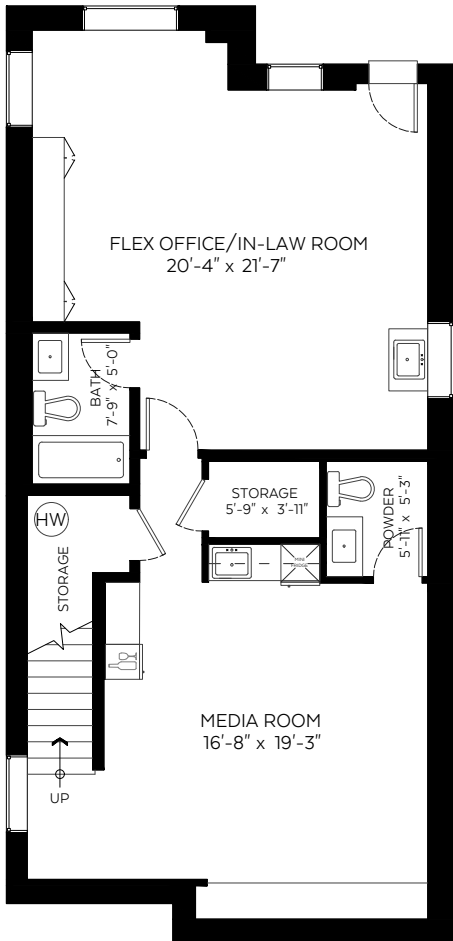
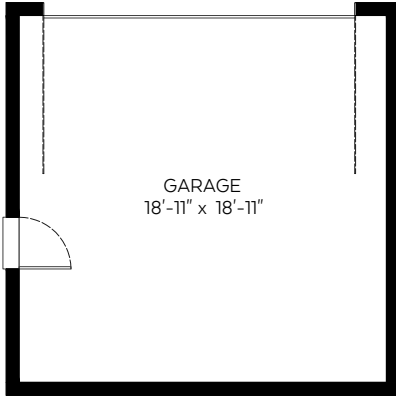
604.809.9777 tom@tomhassan.com  
 Royal LePage Sussex www.tomhassan.com

1216 Duchess Avenue,  
 West Vancouver, B.C.

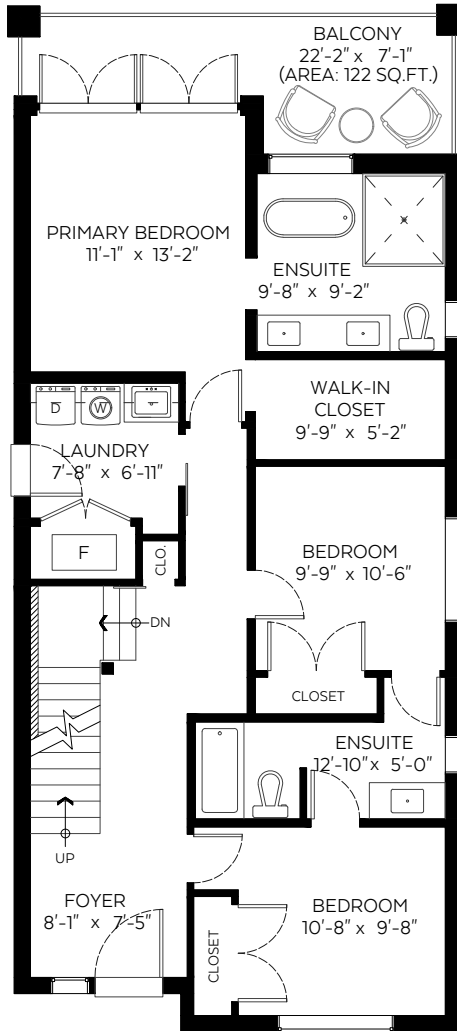
Main Floor:	911 sq.ft.
Lower Floor:	1,057 sq.ft.
Basement Floor:	1,061 sq.ft.
<b>Total:</b>	<b>3,029 sq.ft.</b>

### Auxiliary Area

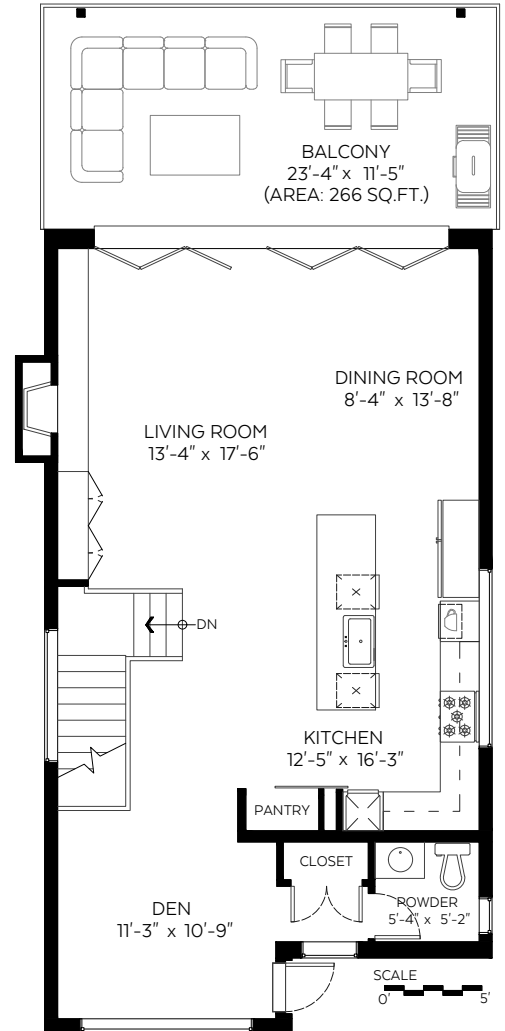
Garage:	409 sq.ft.
Balconies:	388 sq.ft.



**Basement Floor Plan**  
 Floor Area: 1,061 sq.ft.  
 Ceiling Height: 8.75 ft.



**Lower Floor Plan**  
 Floor Area: 1,057 sq.ft.  
 Ceiling Height: 9 ft.



**Main Floor Plan**  
 Floor Area: 911 sq.ft.  
 Ceiling Height: 10 ft.



Valid Until: January 23, 2024

The floor plan is not suitable for architectural/construction and is covered under E&O. © Excelsior Measuring Inc. 2023. All rights reserved for Excelsior Measuring Inc. Users shall not publish and distribute such material (in whole or in part) and/or incorporate it in other works in any form.



Booked on  
 the Pixilink App™

