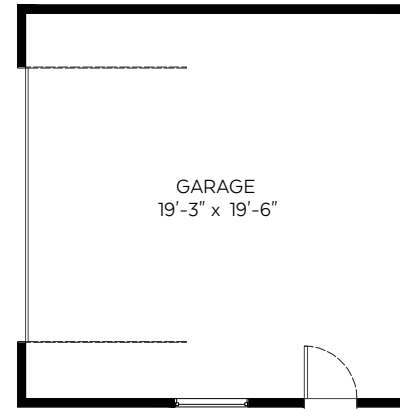
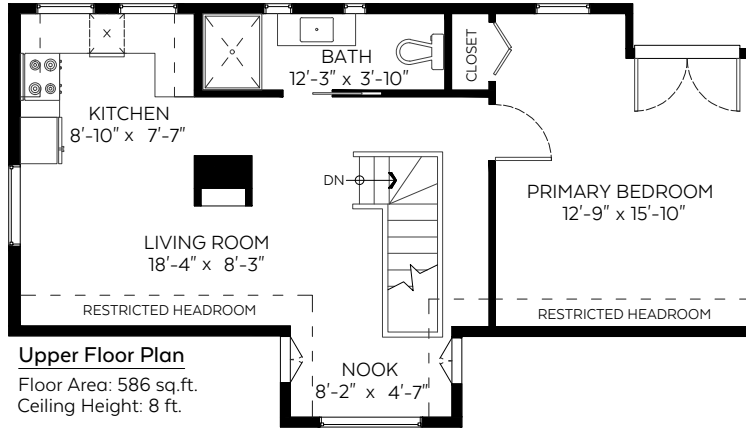


- TOM HASSAN -

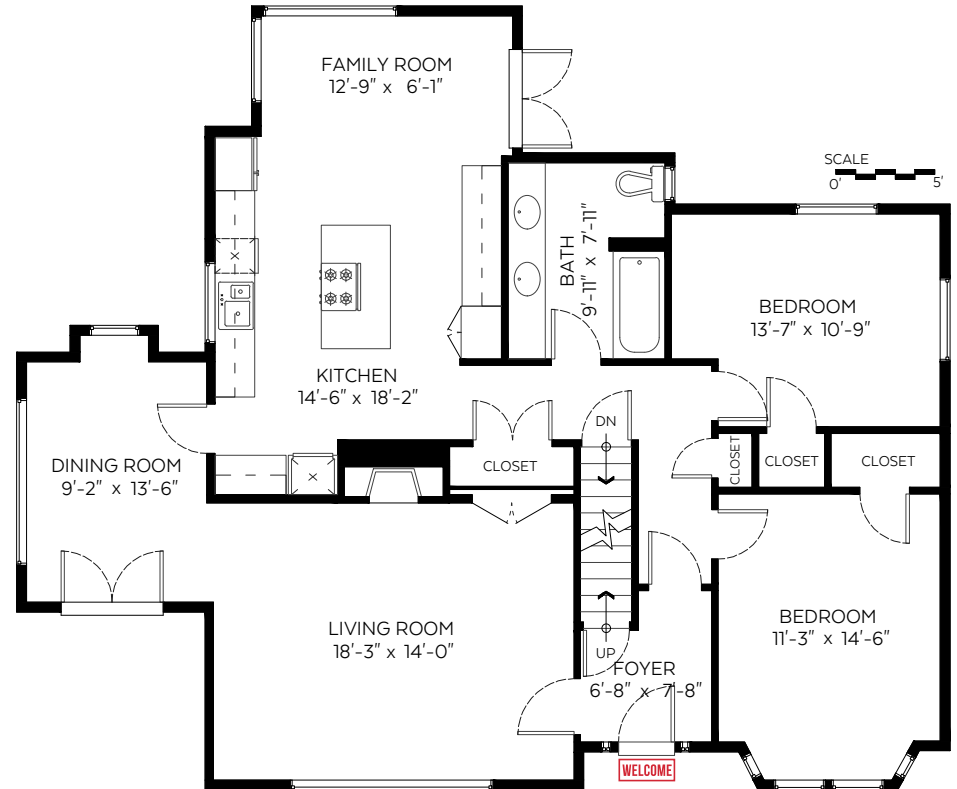
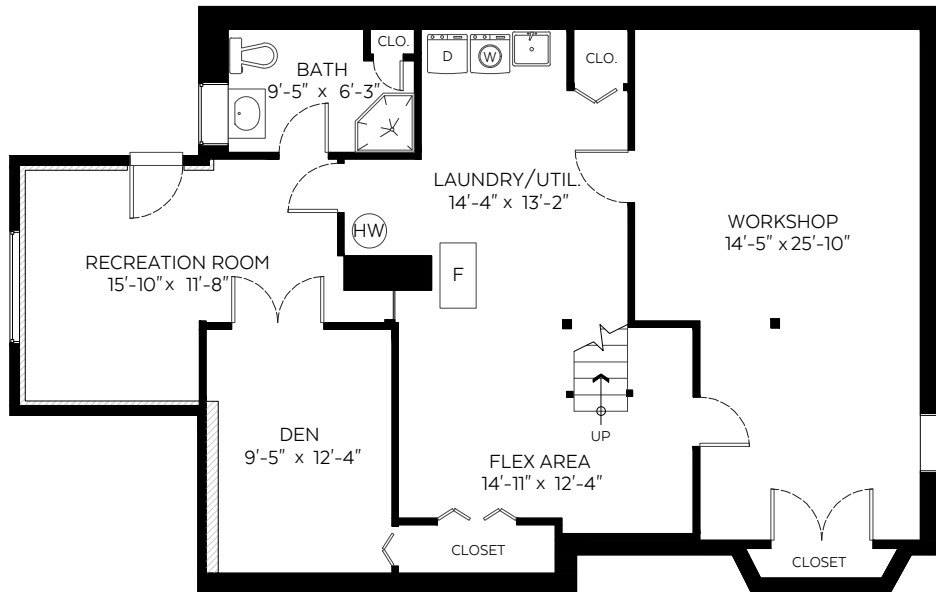
604.809.9777 tom@tomhassan.com
 Royal LePage Sussex www.tomhassan.com



2695 Mathers Avenue,
 West Vancouver, B.C.

Main Floor:	1,394 sq.ft.
Upper Floor:	586 sq.ft.
Lower Floor:	1,223 sq.ft.
Total:	3,203 sq.ft.
Restr. Headroom:	78 sq.ft.
Grand Total:	3,281 sq.ft.

Auxiliary Area	
Garage:	409 sq.ft.



Valid Until: March 19, 2024

The floor plan is not suitable for architectural/construction and is covered under E&O. © Excelsior Measuring Inc. 2023. All rights reserved for Excelsior Measuring Inc. Users shall not publish and distribute such material (in whole or in part) and/or incorporate it in other works in any form.



Booked on
 the Pixilink App™

