



**TOM HASSAN**

604.809.9777 cell

tom@tomhassan.com

www.tomhassan.com

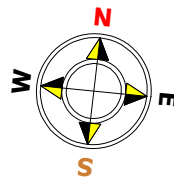
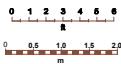
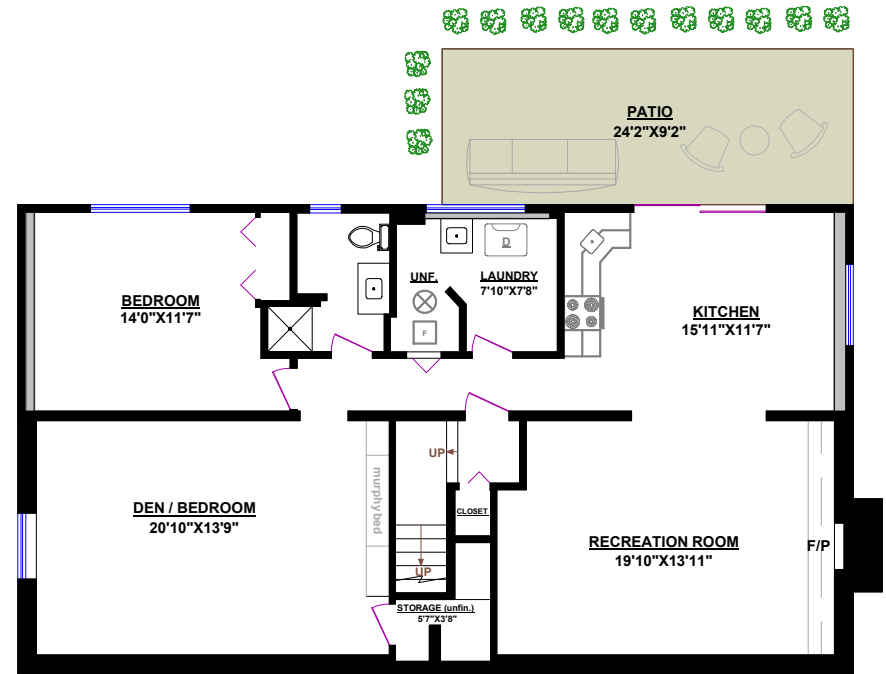


2397 Marine Drive,  
West Vancouver V7V1K9

**5577 GALLAGHER PLACE, WEST VANCOUVER**

TOTALS	
Main Floor (finished):	1,469 sq.ft.
Lower Level (finished):	1,321 sq.ft.
<b>TOTAL FINISHED:</b>	<b>2,790 sq.ft.</b>
Lower Level (unfinished):	38 sq.ft.
<b>TOTAL UNFINISHED:</b>	<b>38 sq.ft.</b>
<b>GRAND TOTAL :</b>	<b>2,828 sq.ft.</b>

OTHER AREAS:	
Garage:	361 sq.ft.
Shed:	47 sq.ft.
Shed:	36 sq.ft.
Deck:	578 sq.ft.
Patio:	222 sq.ft.



© Vancouver Realty Support Group Inc., (604) 761-7919

www.floorplansvancouver.com  
PREMIER PRODUCTS AND SERVICES