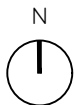
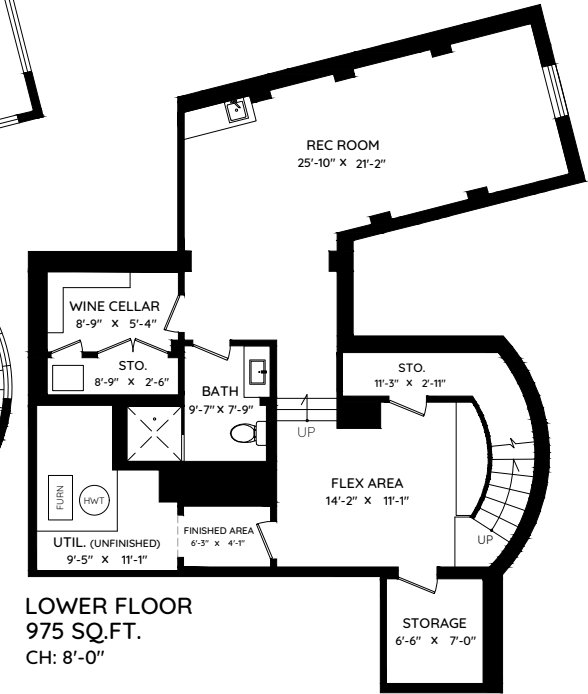
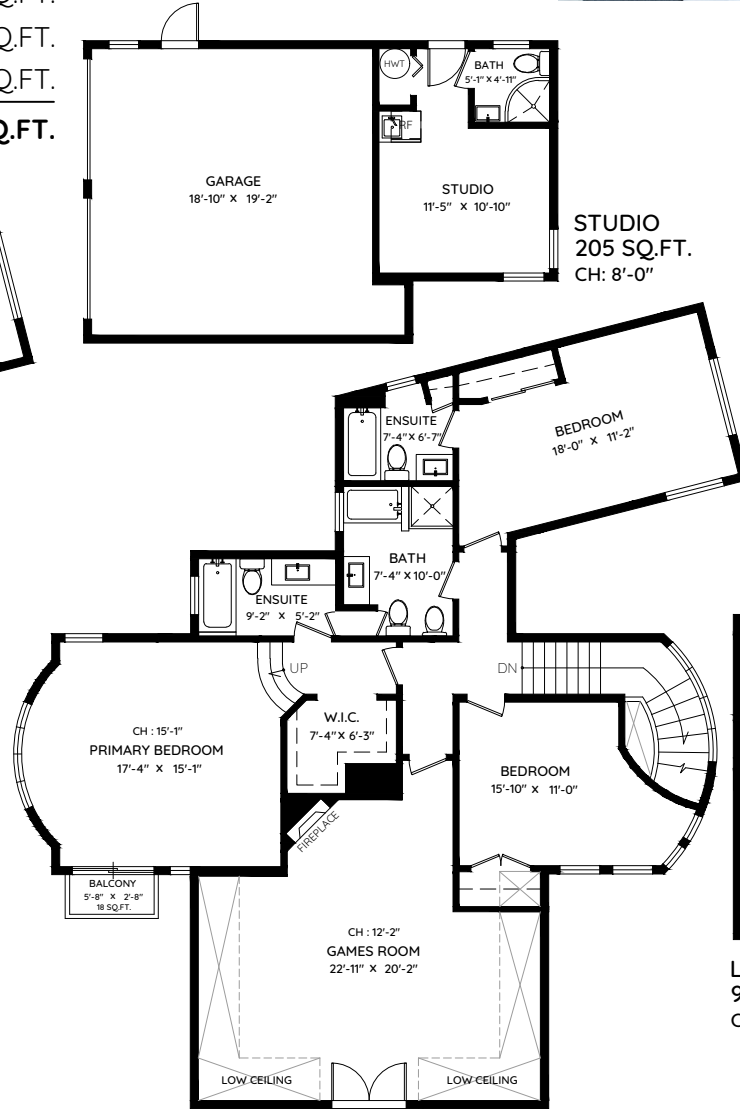
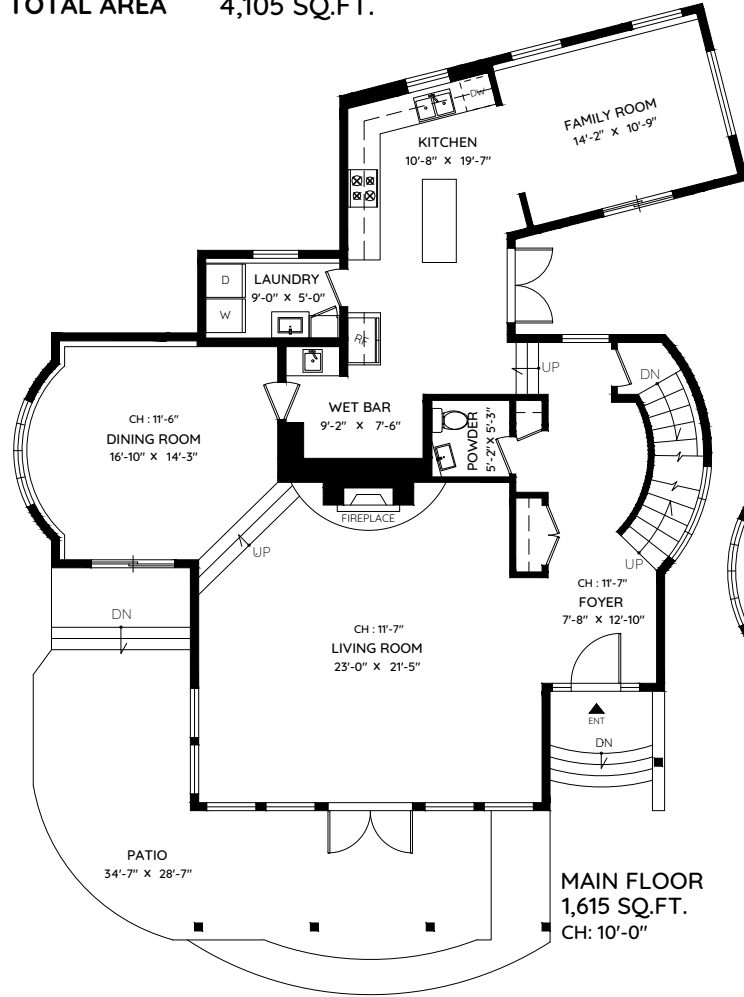


2919 TOWER HILL

WEST VANCOUVER, BC

MAIN	1,615 SQ.FT.	GARAGE	410 SQ.FT.
UPPER	1,420 SQ.FT.	STUDIO	205 SQ.FT.
LOWER	975 SQ.FT.	BALCONY	38 SQ.FT.
TOTAL	4,010 SQ.FT.	PATIO	492 SQ.FT.
UNFINISHED	95 SQ.FT.	TOTAL	1,145 SQ.FT.
TOTAL AREA	4,105 SQ.FT.		



0 ft 3 ft 5 ft 10 ft

The floor plan and the measurements are approximate within +/- 2% and are to be used for advertising usage only. May include unfinished area. Not suitable for architectural or construction. E&O Insured

keyplan
plan your space

Booked on
the Pixlink App™

