

- TOM HASSAN -

604.809.9777 tom@tomhassan.com
Royal LePage Sussex www.tomhassan.com

1430 Inglewood Avenue,
West Vancouver, B.C.

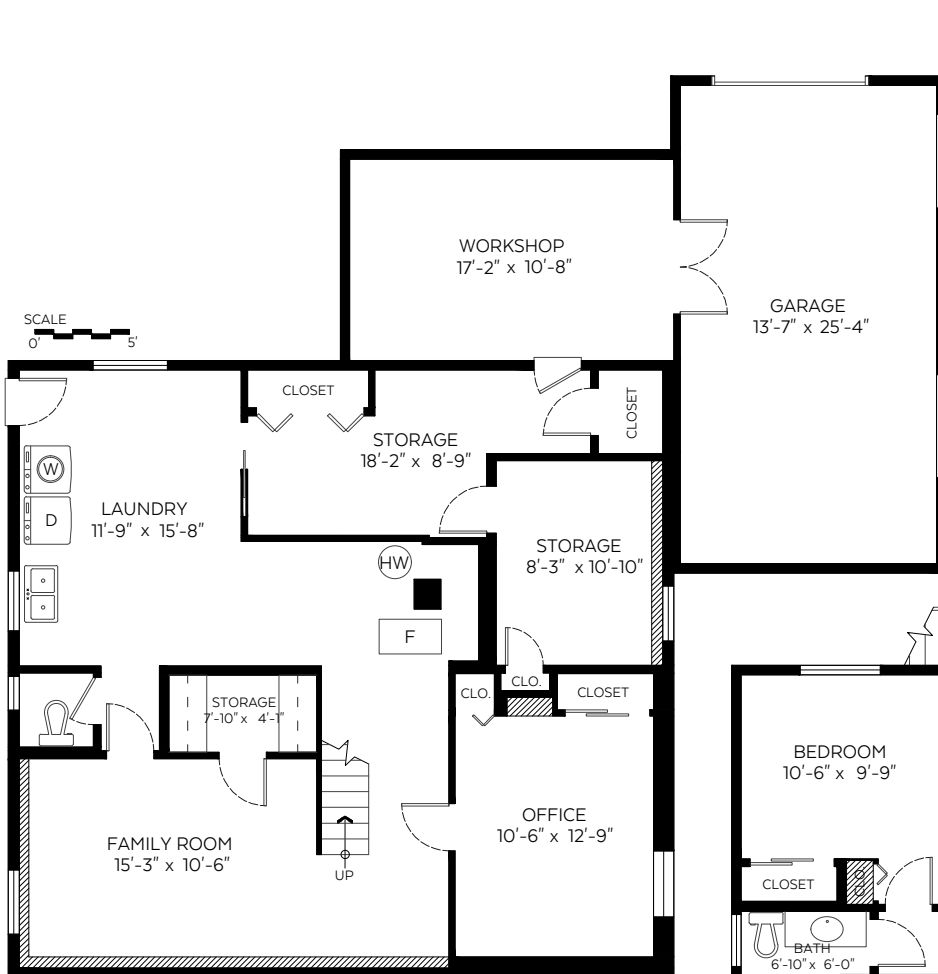
Main Floor: 1,176 sq.ft.
Upper Floor: 394 sq.ft.
Lower Floor: 1,155 sq.ft.

Total: 2,725 sq.ft.

Sun Room: 135 sq.ft.

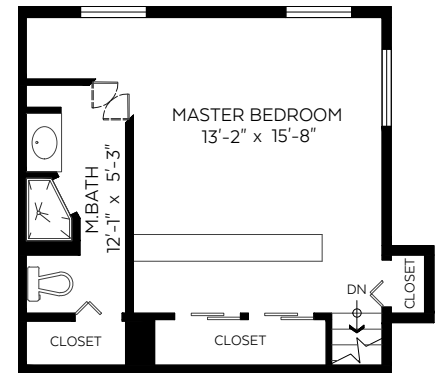
Auxiliary Area

Garage: 377 sq.ft.
Workshop: 197 sq.ft.
Deck: 70 sq.ft.



Lower Floor Plan

Floor Area: 1,155 sq.ft.



Upper Floor Plan

Floor Area: 394 sq.ft.



Main Floor Plan

Floor Area: 1,176 sq.ft.