

# Tom Hassan



**Sussex**

Royal LePage Sussex  
604-809-9777  
tom@tomhassan.com  
www.tomhassan.com

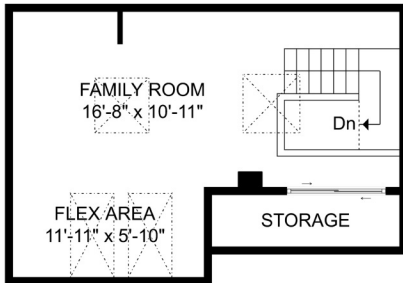
# 15 - 4957 Marine Drive West Vancouver

INTERIOR LIVING SPACE	(sq.ft.)
Top Floor	417
Upper Floor	841
Main Floor	927
<b>Total</b>	<b>2,185</b>

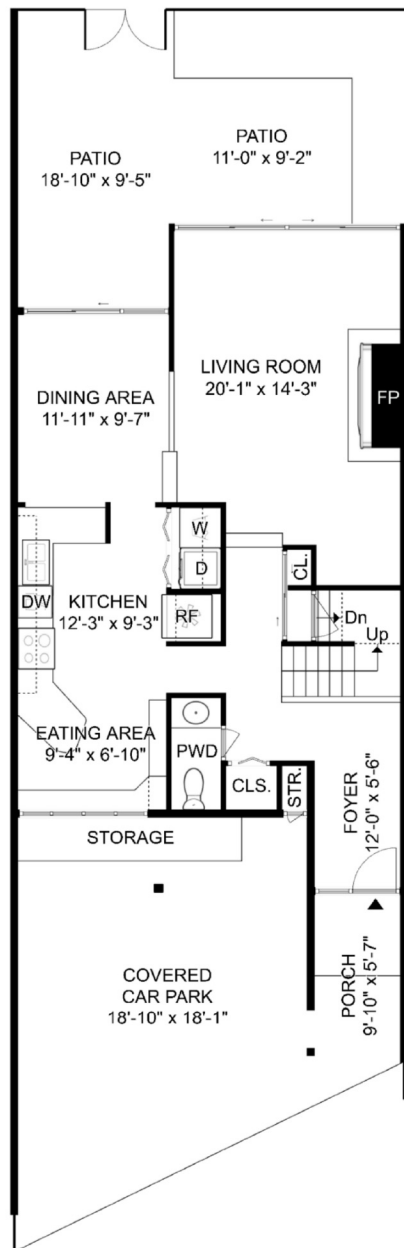
AUXILIARY	(sq.ft.)
Balcony Total	259
Car Park	381
Porch	55
Patio Total	289
Crawl Space	815
<b>Combined Total</b>	<b>3,984</b>

3 bed   
 2½ bath   
 2 parking

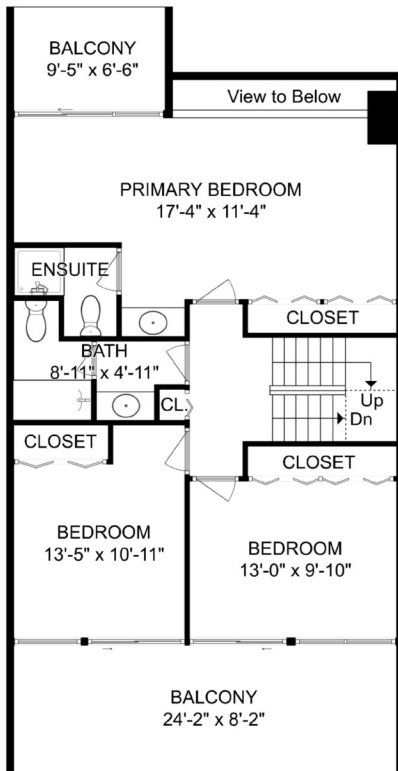
**TOP FLOOR**  
417 sq.ft. | Ceiling Height: 6'-10"



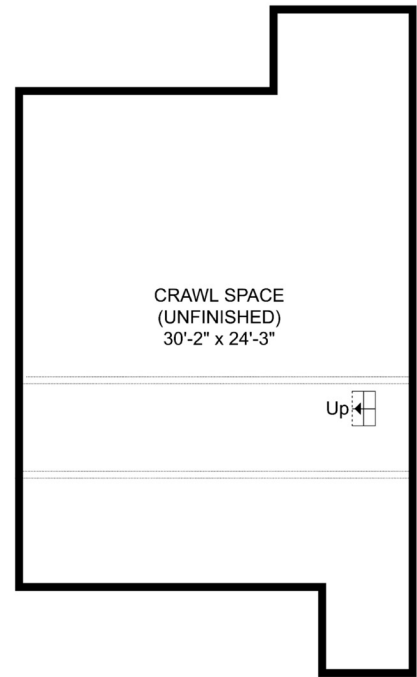
**MAIN FLOOR**  
927 sq.ft. | Ceiling Height: 8'-0" to 16'-0"



**UPPER FLOOR**  
841 sq.ft. | Ceiling Height: 8'-0" to 12'-8"



**CRAWL SPACE**  
815 sq.ft. | Ceiling Height: 3'-10"



The floor plan is not suitable for architectural/construction and is covered under E&O. All right reserved for Virtualized Studio. User shall not publish and distribute such material and/or incorporate it in other works in any form.

