

**TOM HASSAN**  
**Prudential Sussex Realty**



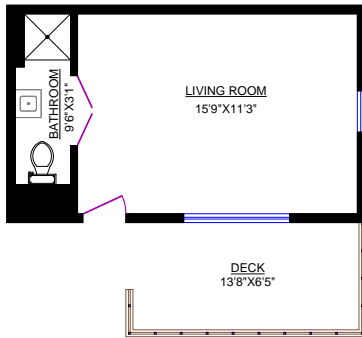
2397 Marine Drive  
 West Vancouver, BC V7V 1K9  
 phone: 604-809-9777  
 www.tomhassan.com

**2686 NELSON AVENUE, WEST VANCOUVER**

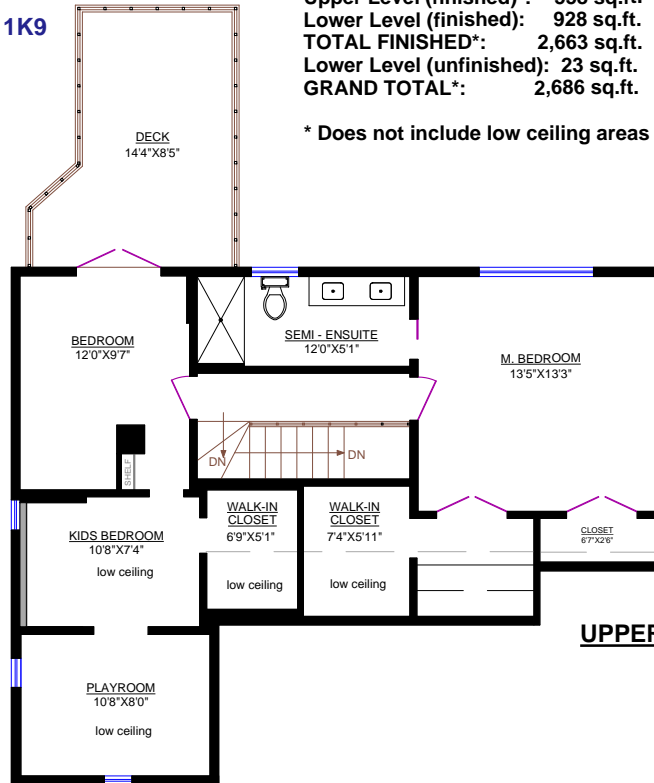
**TOTALS:**  
 Main Floor (finished): 1,177 sq.ft.  
 Upper Level (finished)\*: 558 sq.ft.  
 Lower Level (finished): 928 sq.ft.  
**TOTAL FINISHED\*:** 2,663 sq.ft.  
 Lower Level (unfinished): 23 sq.ft.  
**GRAND TOTAL\*:** 2,686 sq.ft.

**OTHER AREAS:**  
 Guest House: 248 sq.ft.  
 Deck (Main): 281 sq.ft.  
 Deck (Upper): 134 sq.ft.  
 Deck (Guest House): 88 sq.ft.  
 Patio: 297 sq.ft.  
 Patio: 112 sq.ft.

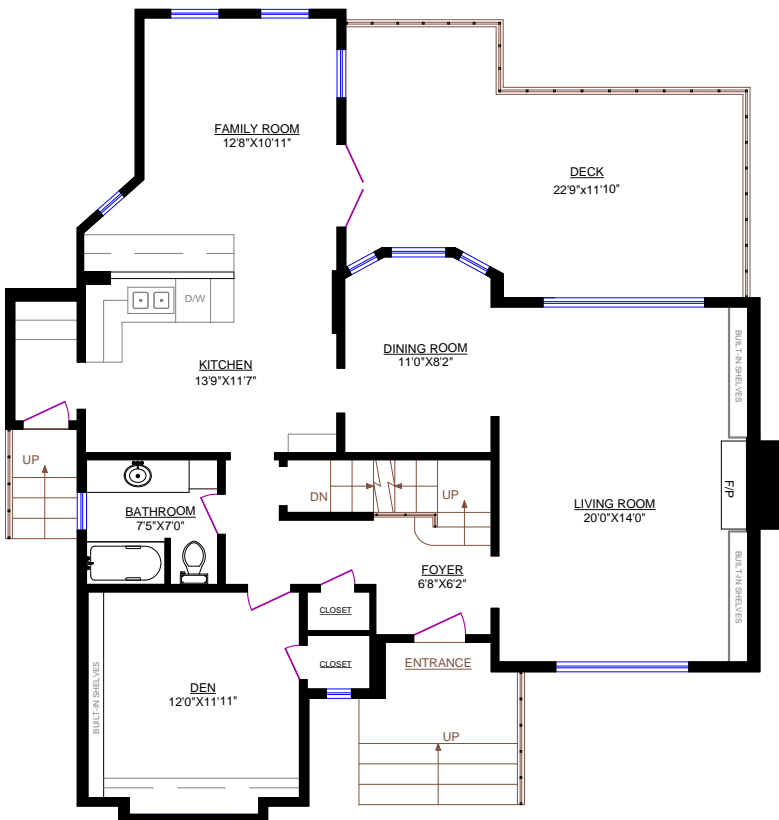
\* Does not include low ceiling areas of 268 sq.ft.



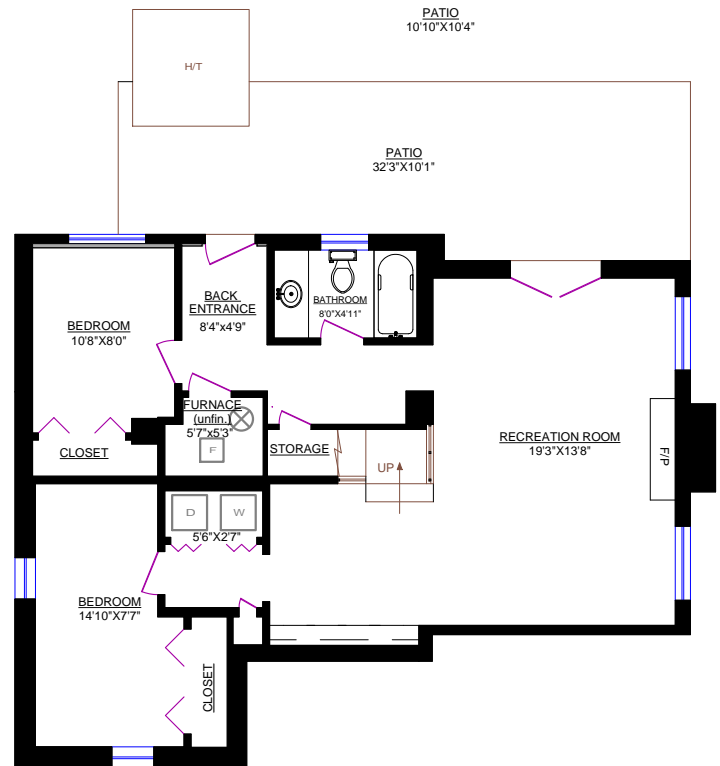
**GUEST HOUSE**



**UPPER LEVEL**



**MAIN FLOOR**



**LOWER LEVEL**