

MAIN FLOOR



TOM HASSAN

604.809.9777 cell

tom@tomhassan.com

www.tomhassan.com



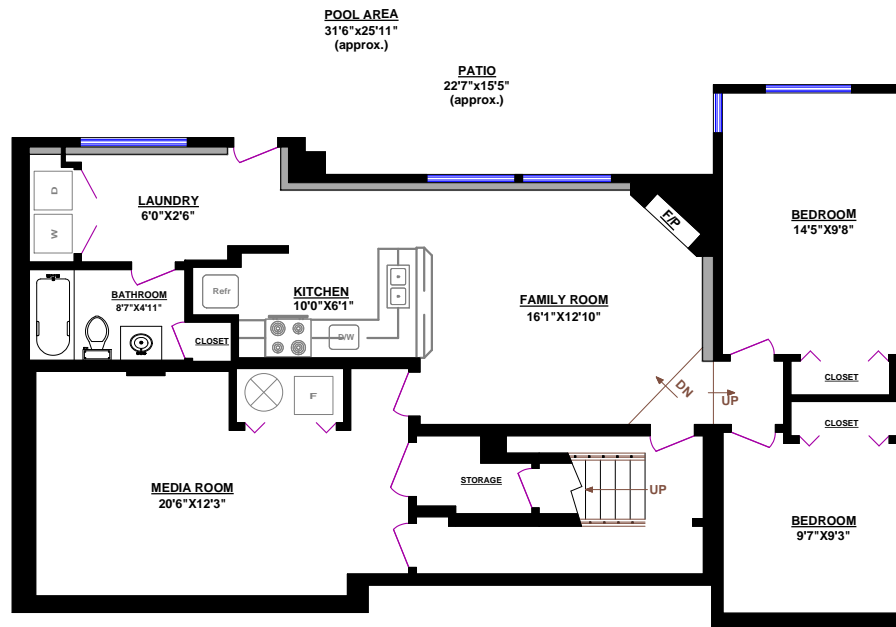
2397 Marine Drive,
West Vancouver V7V1K9

1144 INGLEWOOD AVENUE, WEST VANCOUVER

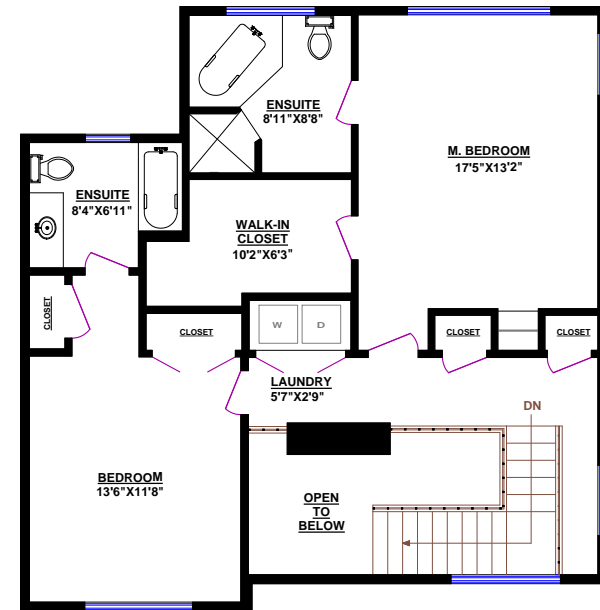
TOTALS

Main Floor (finished): 1,261 sq.ft.
 Upper Level (finished): 909 sq.ft.
 Lower Level (finished): 1,241 sq.ft.
TOTAL FINISHED: 3,411 sq.ft.
 Lower Level (unfinished): 18 sq.ft.
GRAND TOTAL: 3,429 sq.ft.

OTHER AREAS:
 Garage: 688 sq.ft.
 Deck: 334 sq.ft.



LOWER LEVEL



UPPER LEVEL

