

- TOM HASSAN -

604.809.9777 tom@tomhassan.com
 Royal LePage Sussex www.tomhassan.com

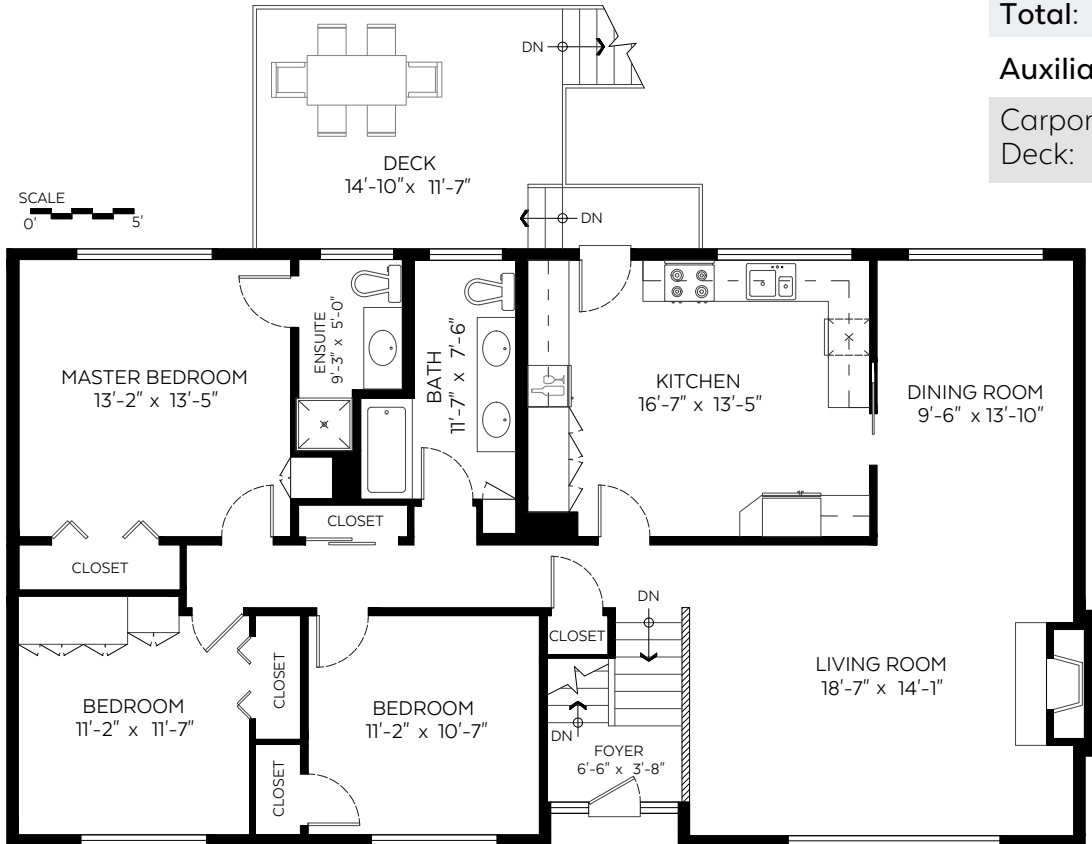
1525 Rena Crescent,
 West Vancouver, B.C.

Main Floor: 1,500 sq.ft.
 Upper Floor: 1,500 sq.ft.

Total: 3,000 sq.ft.

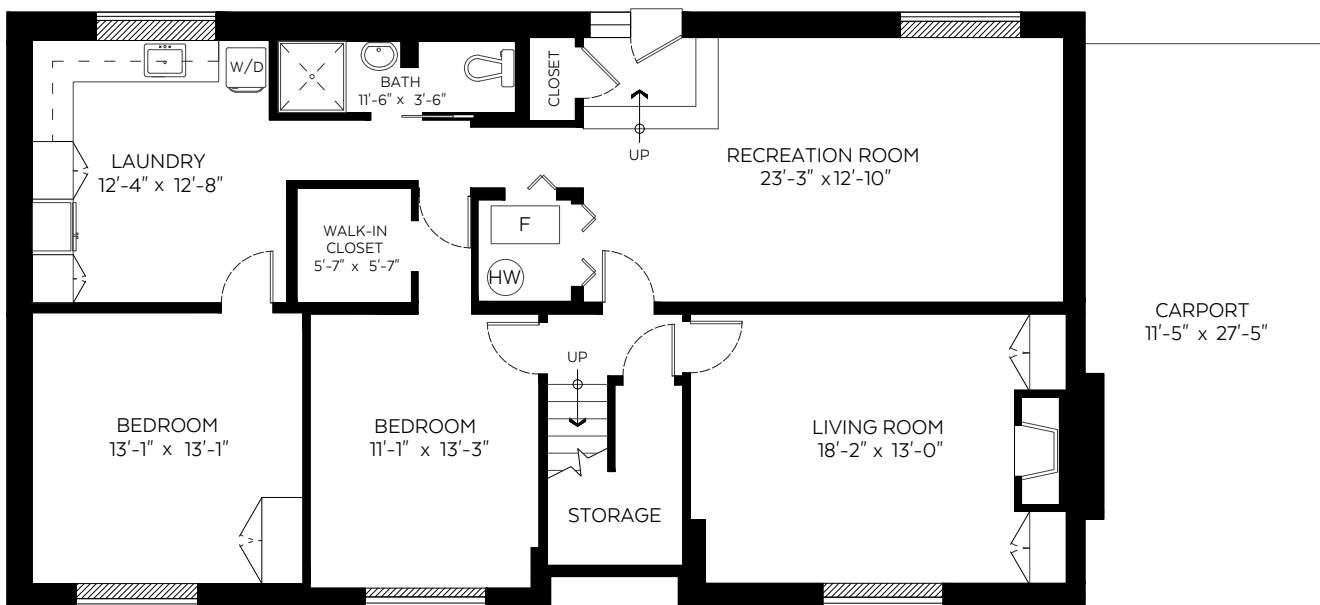
Auxiliary Area

Carport: 307 sq.ft.
 Deck: 192 sq.ft.



Main Floor Plan

Floor Area: 1,500 sq.ft.
 Ceiling Height: 8 ft.



Lower Floor Plan

Floor Area: 1,500 sq.ft.
 Ceiling Height: 7.5 ft.



Valid Until: December 14, 2022

The floor plan is not suitable for architectural/construction and is covered under E&O. © Excelsior Measuring Inc. 2019. All rights reserved for Excelsior Measuring Inc. Users shall not publish and distribute such material (in whole or in part) and/or incorporate it in other works in any form.



Booked on
 the Pixilink App™

