

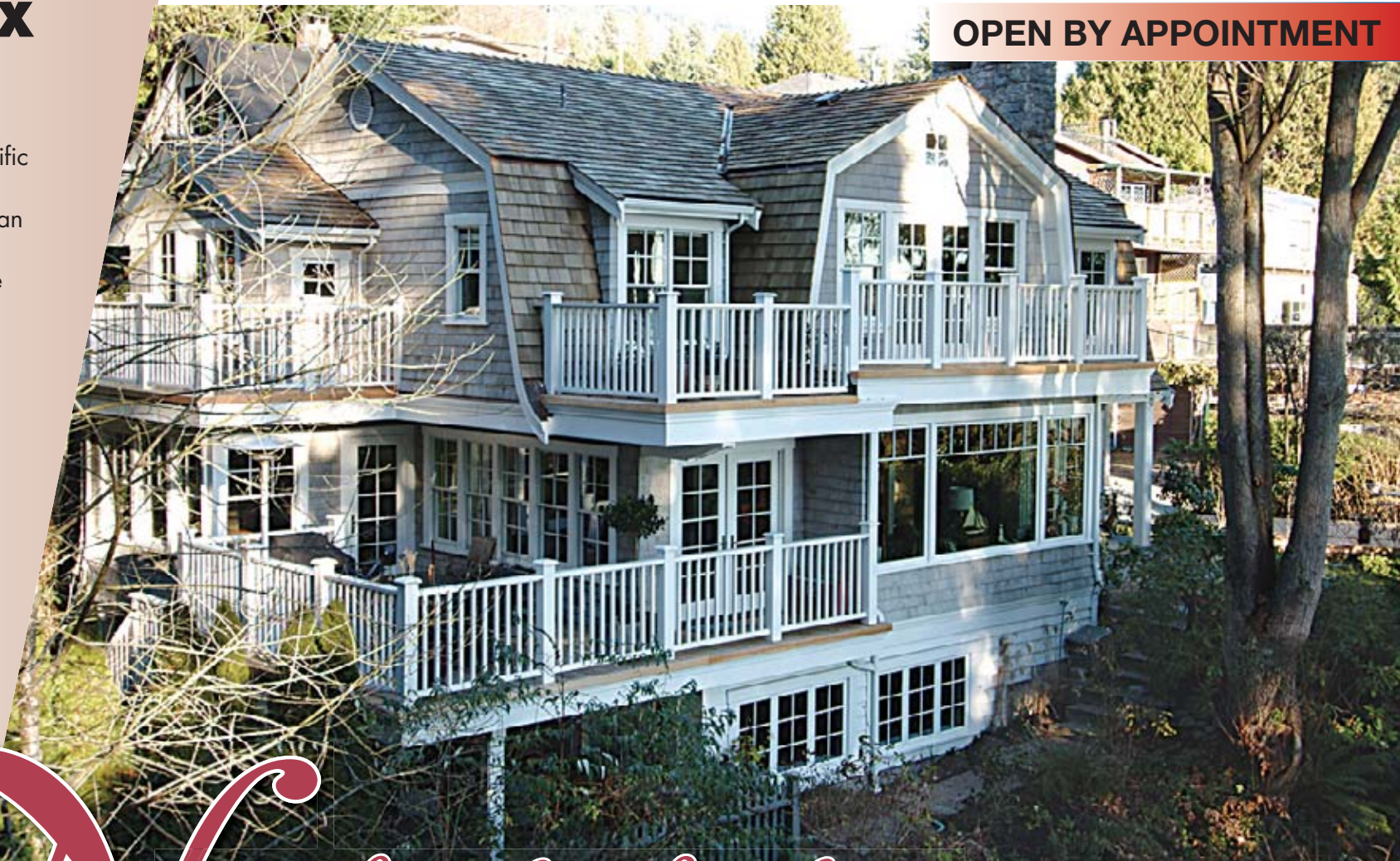


December 23, 2005

INDEX

- 2 Prudential
- 14 Sutton
- 15 RE/MAX
- 26 Concord Pacific
- 27 Sutton
- 30 Angell Hasman
- 31 Westreal
- 31 Royal LePage
- 34 1% Realty
- 35 Macdonald

OPEN BY APPOINTMENT



Vantucket Beach House in West Bay

235 Maple Lane, West Vancouver

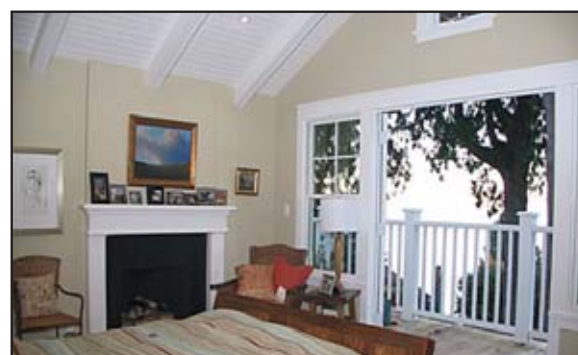
Reminiscent of Cape Cod and the Hamptons, this custom built 3,400 square foot home enjoys spectacular semi-waterfront ocean views. 200 feet from West Bay Beach, this 4 or 5 bedroom luxury home features 4 bedrooms up, spacious entertainment and family sized open plan on main and huge kids recreation space down with walk-out basement overlooking grass yard and creek. Relish the attention to authentic period detail, premium quality millwork and top of the line finishings. Deluxe kitchen with Viking stainless steel commercial appliances, connecting family room w/ surround sound and built-in cabinetry, open dining and living room, hardwood floors, stone wood burning fireplace. Upstairs, 4 bedrooms with stunning master w/ gas fireplace, vaulted ceilings, French doors, private deck, ensuite w/ soaker tub and steam room and a water view to take your breathe away. Exterior features New England style shingles, 4 sun decks, Pella windows, perennial gardens, rock pathways, creek bridge. Located off Radcliffe Avenue, West Vancouver's street of dreams, 235 Maple Lane is like living in your own gulf island getaway... no need for a vacation home. Just a few minutes away from the seaside village of Dundarave. Truly unique... you will love this home!

\$2,595,000



Tom Hassan
604-809-9997
www.tomhassan.com

 **Prudential**
Sussex Realty - Tom Hassan



Photos: SUPPLIED