

# - TOM HASSAN -

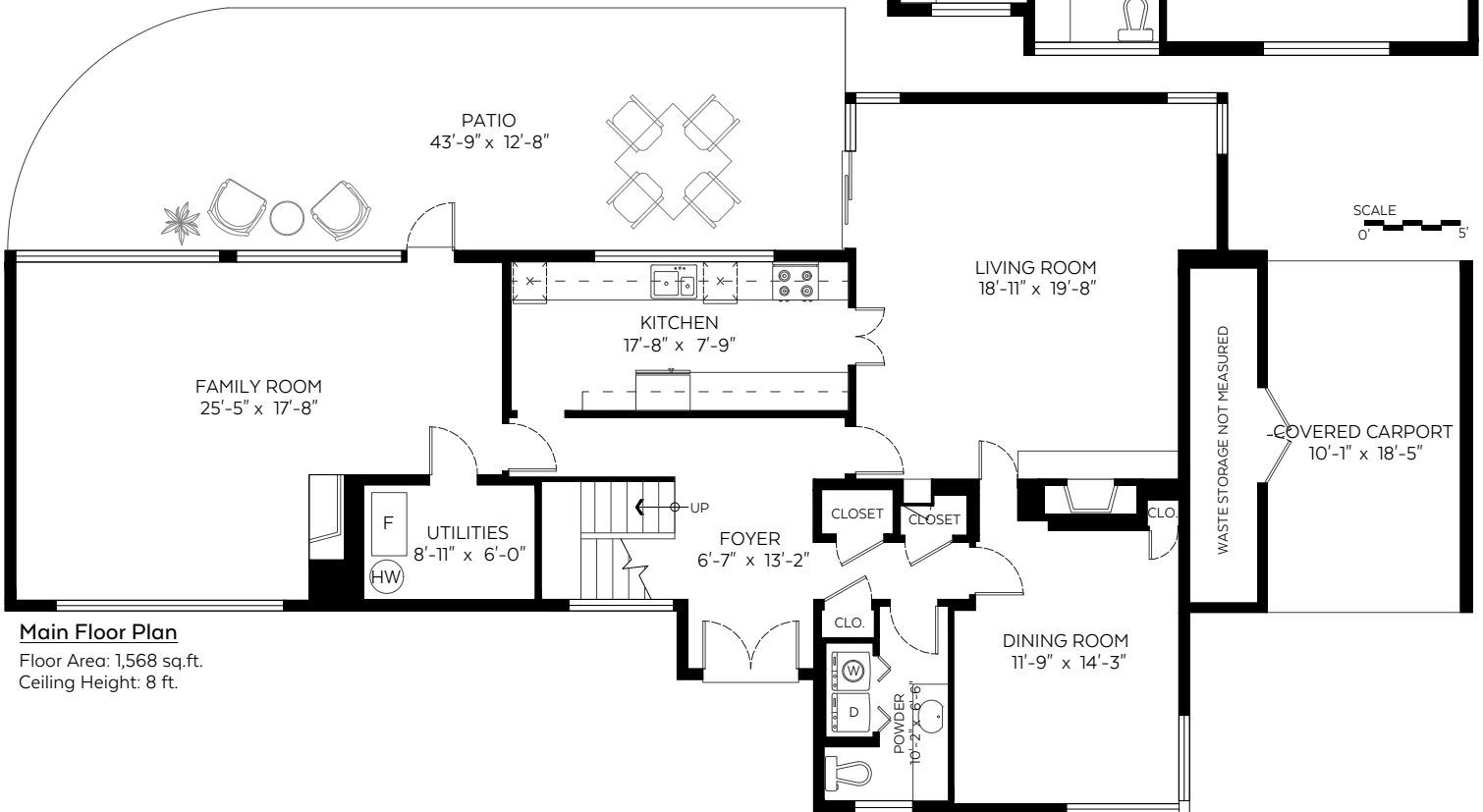
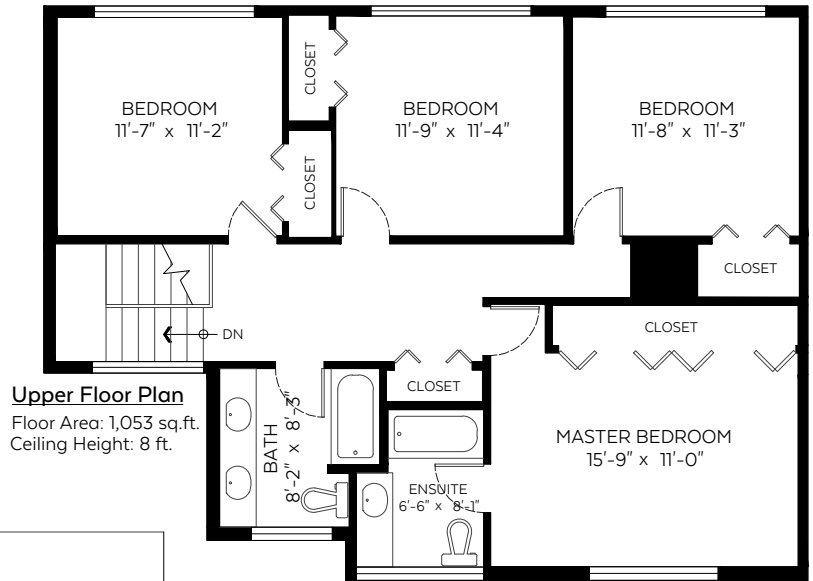
604.809.9777 tom@tomhassan.com  
 Royal LePage Sussex www.tomhassan.com

933 Sherwood Lane,  
 West Vancouver, B.C.

Main Floor: 1,568 sq.ft.  
 Upper Floor: 1,053 sq.ft.  
**Total: 2,621 sq.ft.**

### Auxiliary Area

Carport: 186 sq.ft.  
 Patio: 521 sq.ft.



SCALE  
 0' 5'



Valid Until: May 17, 2022

The floor plan is not suitable for architectural/construction and is covered under E&O. © Excelsior Measuring Inc. 2019. All rights reserved for Excelsior Measuring Inc. Users shall not publish and distribute such material (in whole or in part) and/or incorporate it in other works in any form.



Booked on  
 the Pixilink App™

