

- TOM HASSAN -

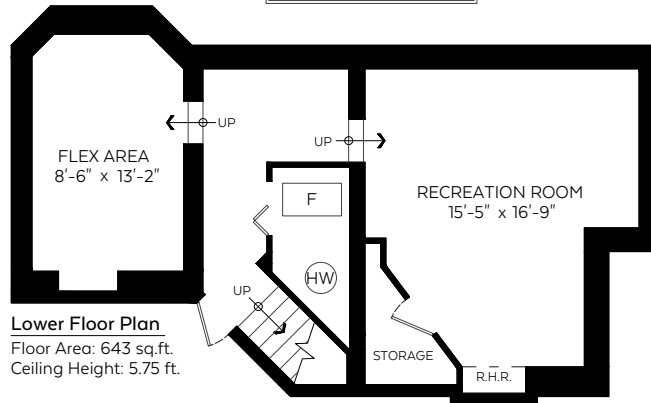
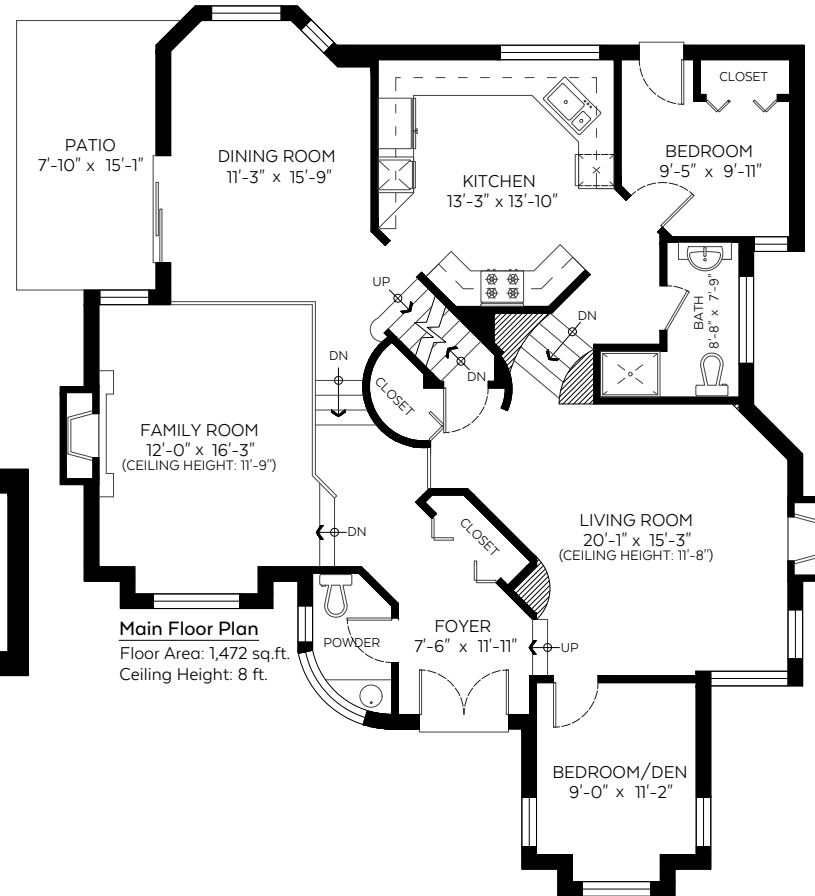
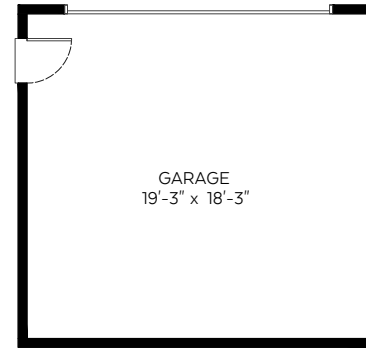
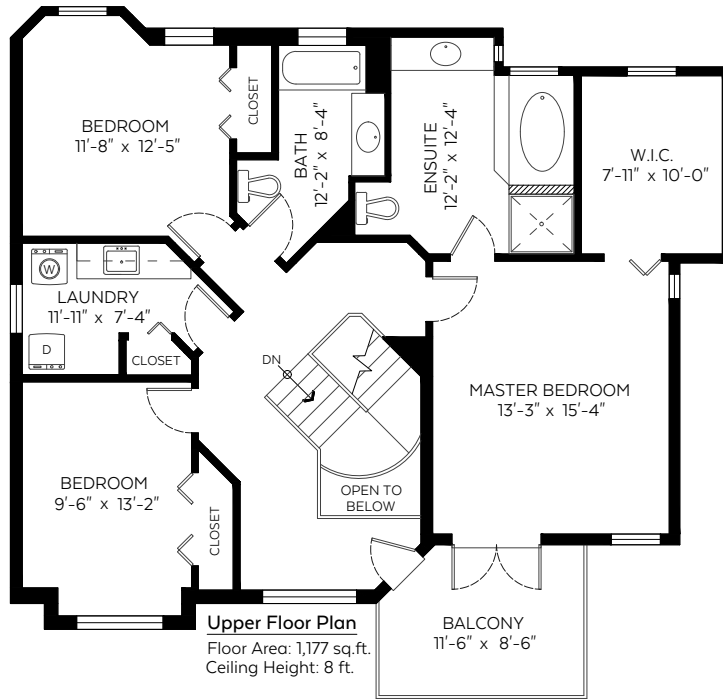
604.809.9777 tom@tomhassan.com
 Royal LePage Sussex www.tomhassan.com

1523 Lawson Avenue,
 West Vancouver, B.C.

Main Floor:	1,472 sq.ft.
Upper Floor:	1,177 sq.ft.
Lower Floor:	643 sq.ft.
Total:	3,292 sq.ft.

Auxiliary Area

Garage:	389 sq.ft.
Patio:	119 sq.ft.
Balcony:	92 sq.ft.



Valid Until: October 24, 2022

The floor plan is not suitable for architectural/construction and is covered under E&O. © Excelsior Measuring Inc. 2021. All rights reserved for Excelsior Measuring Inc. Users shall not publish and distribute such material (in whole or in part) and/or incorporate it in other works in any form.



Booked on
 the Pixilink App™

