

- TOM HASSAN -

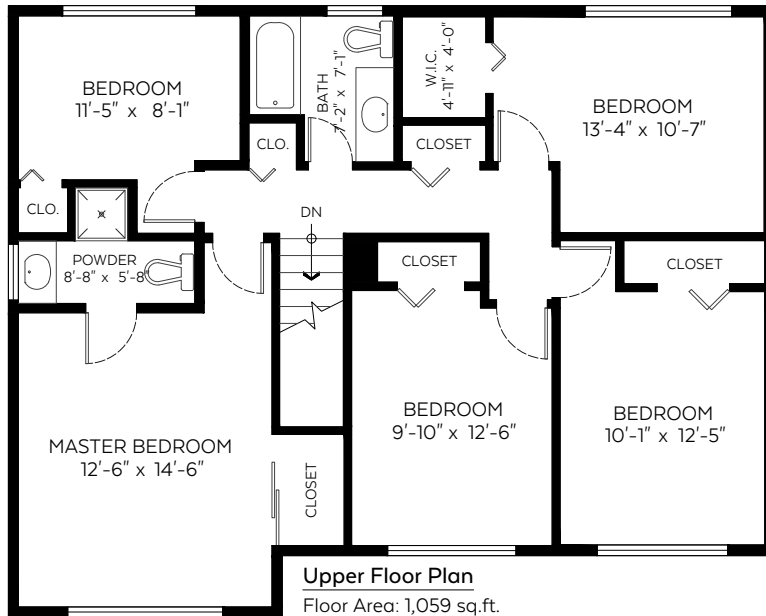
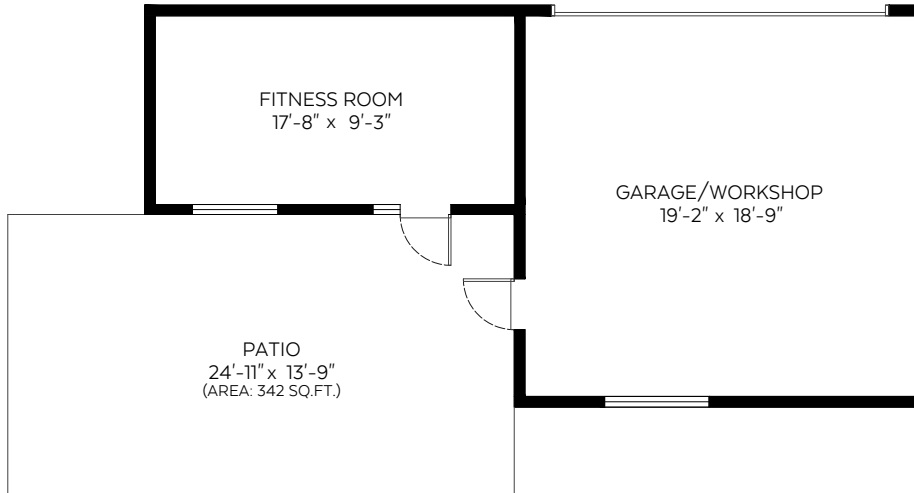
604.809.9777 tom@tomhassan.com
 Royal LePage Sussex www.tomhassan.com

955 Jefferson Avenue,
 West Vancouver, B.C.

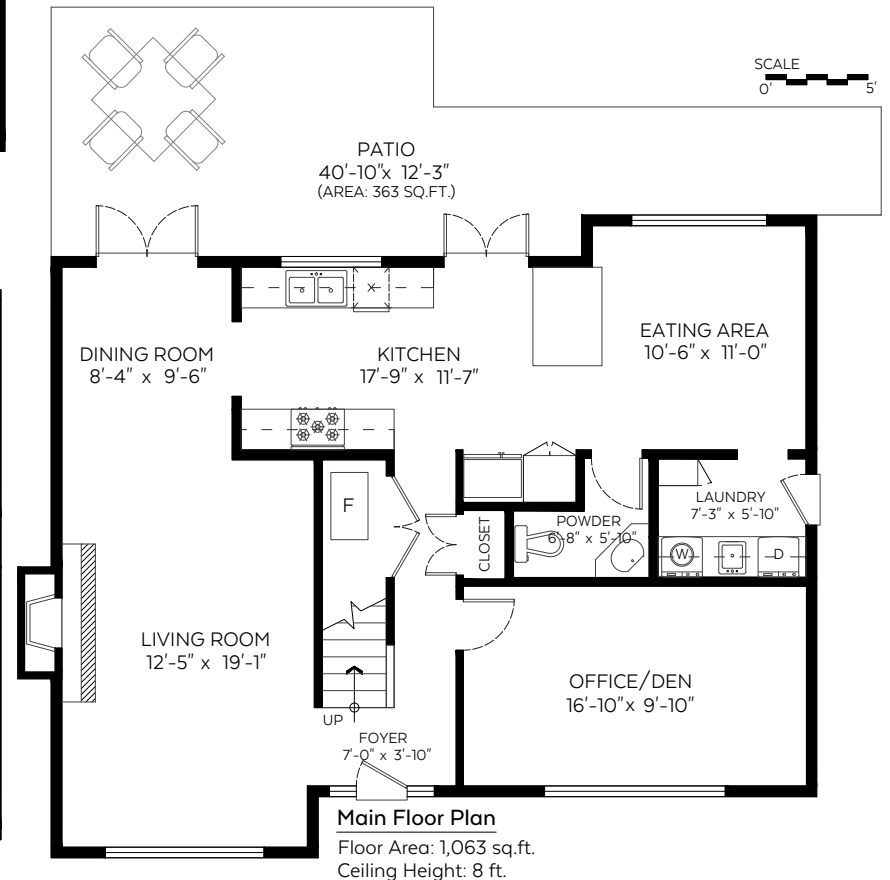
Main Floor:	1,063 sq.ft.
Lower Floor:	1,059 sq.ft.
Total:	2,122 sq.ft.

Auxiliary Area

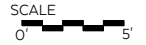
Garage:	395 sq.ft.
Fitness Room:	193 sq.ft.
Patios:	705 sq.ft.



Upper Floor Plan
 Floor Area: 1,059 sq.ft.
 Ceiling Height: 8 ft.



Main Floor Plan
 Floor Area: 1,063 sq.ft.
 Ceiling Height: 8 ft.



Valid Until: October 24, 2022

The floor plan is not suitable for architectural/construction and is covered under E&O. © Excelsior Measuring Inc. 2021. All rights reserved for Excelsior Measuring Inc. Users shall not publish and distribute such material (in whole or in part) and/or incorporate it in other works in any form.



Booked on
 the Pixilink App™

