

# - TOM HASSAN -

604.809.9777 tom@tomhassan.com  
 Royal LePage Sussex www.tomhassan.com

1895 26th Street,  
 West Vancouver, B.C.

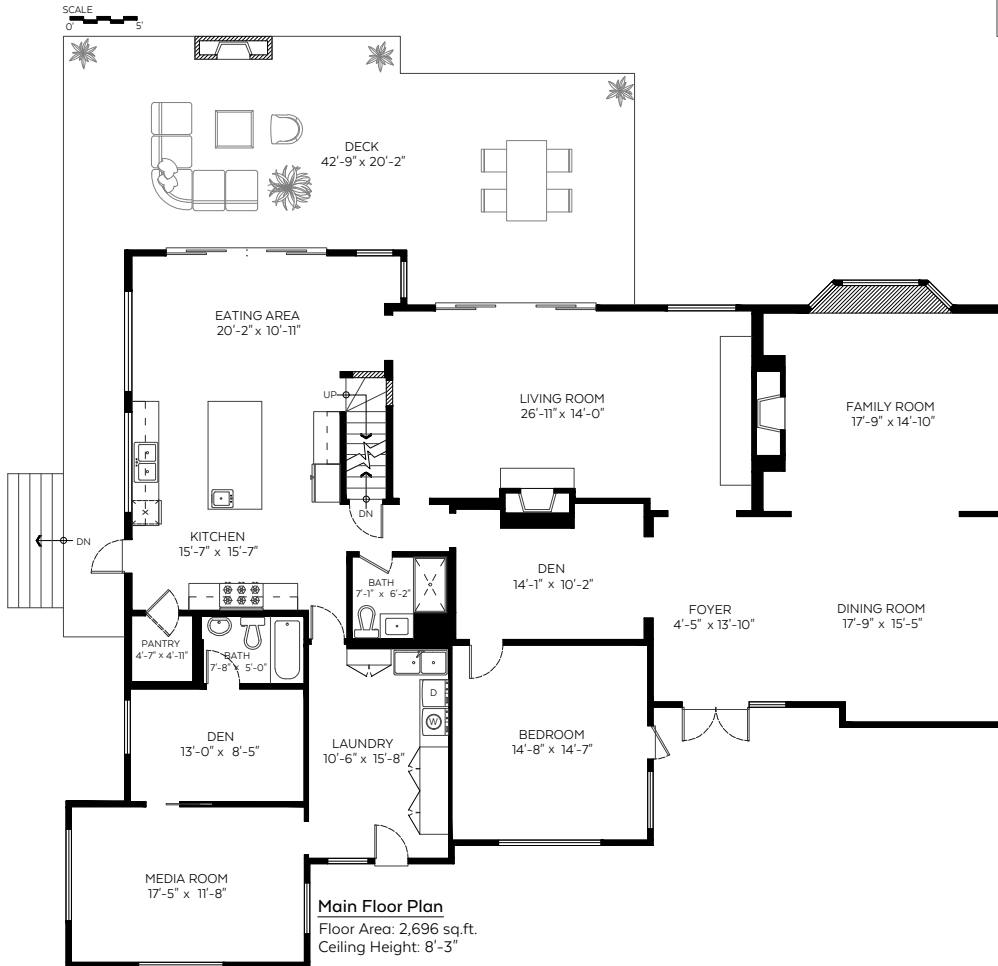
Main Floor: 2,696 sq.ft.  
 Upper Floor: 1,216 sq.ft.  
 Lower Floor: 1,032 sq.ft.

**Total: 4,944 sq.ft.**

Restricted H.R.: 31 sq.ft.

### Auxiliary Area

Garage: 806 sq.ft.  
 Deck: 828 sq.ft.  
 Balcony: 72 sq.ft.



Valid Until: November 23, 2021



Booked on  
 the Pixilink App™



The floor plan is not suitable for architectural/construction and is covered under E&O. © Excelsior Measuring Inc. 2019. All rights reserved for Excelsior Measuring Inc. Users shall not publish and distribute such material (in whole or in part) and/or incorporate it in other works in any form.