

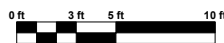
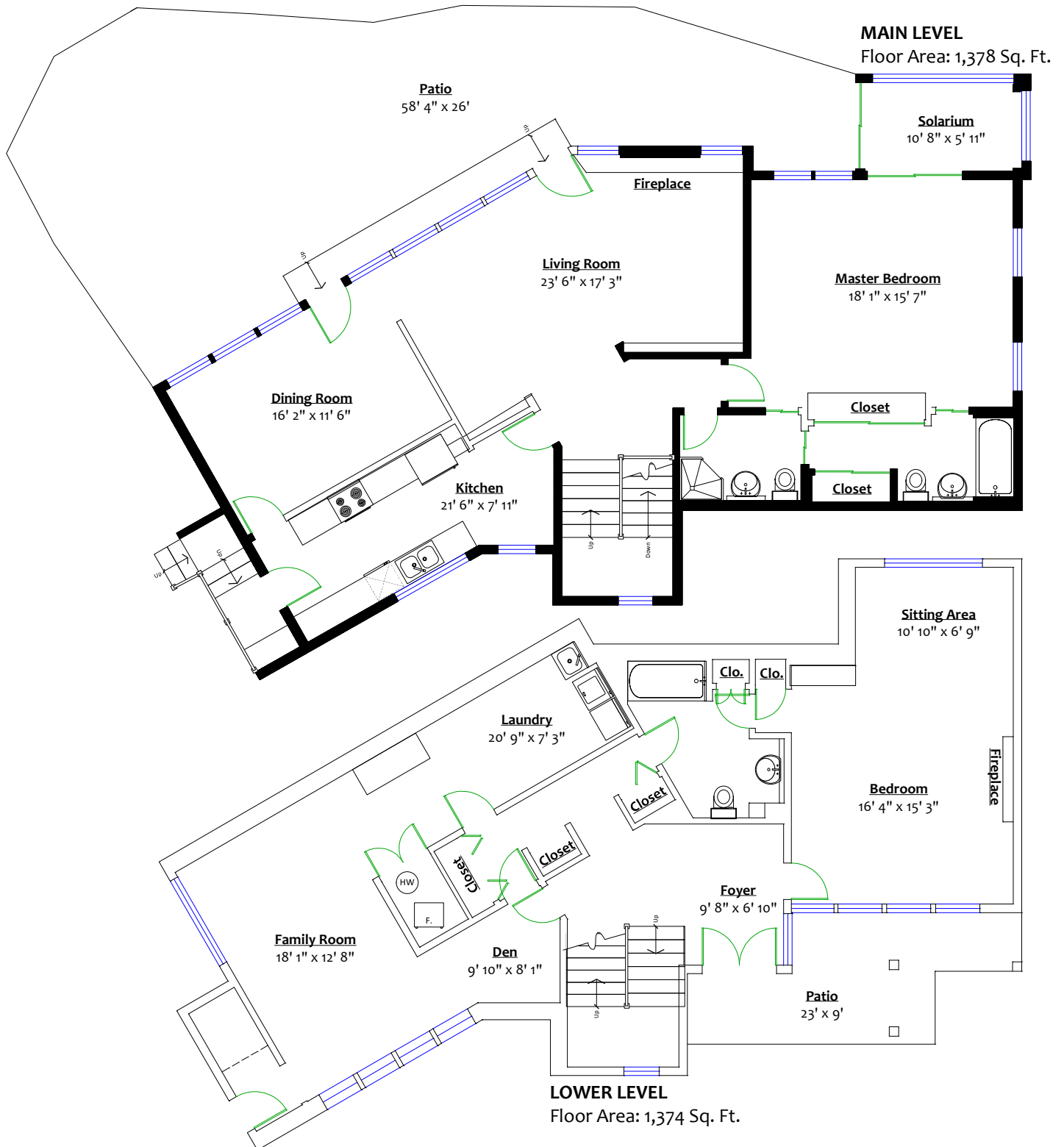
4796 The Highway,
West Vancouver, B.C.

Totals**

Main Level:	1,378 sq. ft.	Main Patio:	817 sq. ft.
Lower Level:	1,374 sq. ft.	Lower Patio:	147 sq. ft.
Total:	2,752 sq. ft.	Total:	964 sq. ft.
Solarium:	80 sq. ft.		
Grand Total:	2,832 sq. ft.		

Sotheby's
INTERNATIONAL REALTY
Canada

Eric Latta
604-351-5211
eric@ericlatta.com



** Approx. based on interior measurements to exterior walls
 *** Total square footage not taken from original blueprints
 **** Total square footage includes under-height areas
 ***** Patio area is estimated due to irregular shape