

- TOM HASSAN -

604.809.9777 tom@tomhassan.com
Royal LePage Sussex www.tomhassan.com

1024 Lawson Avenue,
West Vancouver, B.C.

Main Floor: 1,235 sq.ft.
Upper Floor: 533 sq.ft.
Lower Floor: 558 sq.ft.

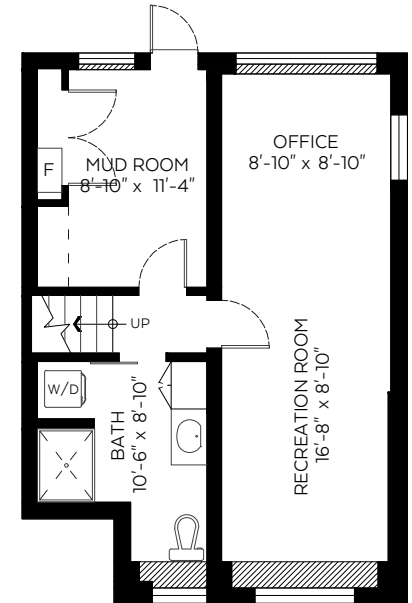
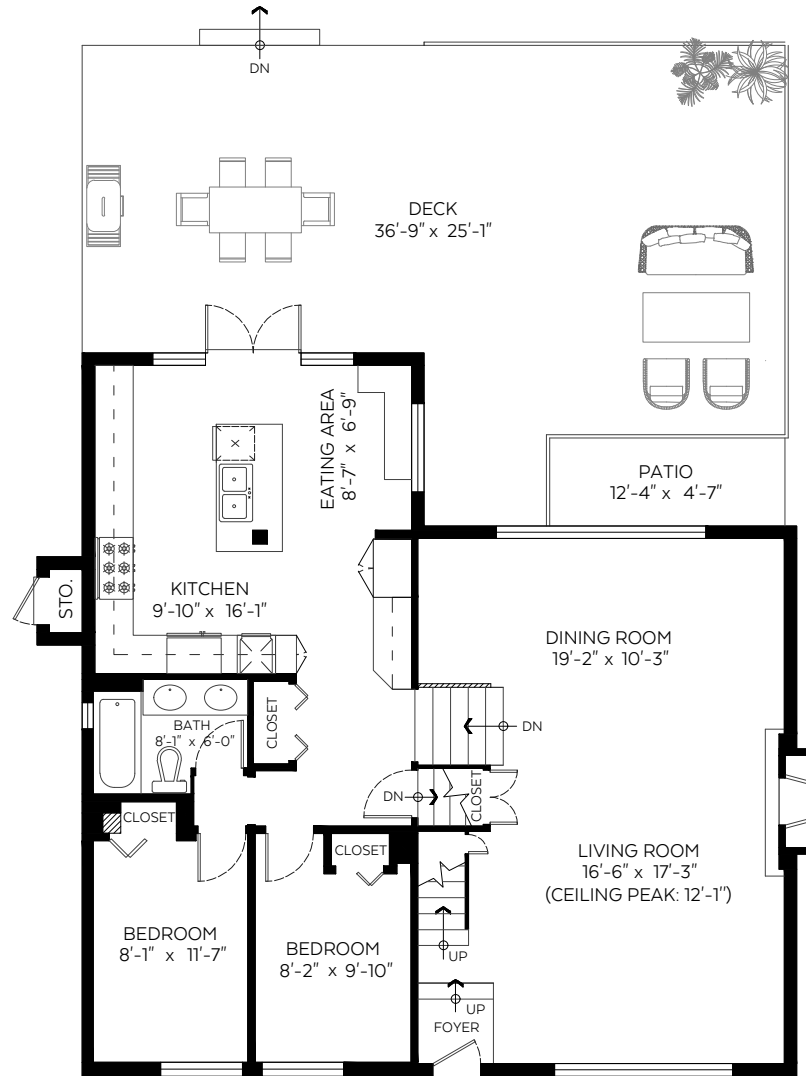
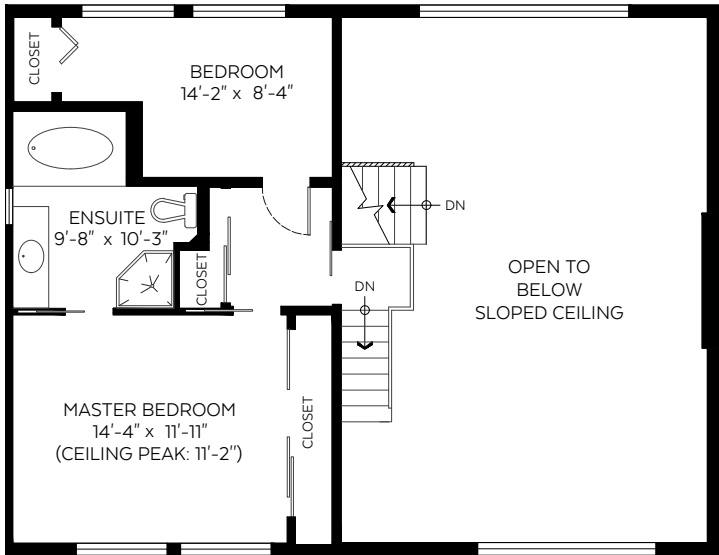
Total: 2,326 sq.ft.

Storage: 11 sq.ft.

Auxiliary Area

Patio: 57 sq.ft.
Deck: 701 sq.ft.

SCALE
0 5'



Valid Until: Decemehr 05, 2022



Booked on
the Pixilink App™



The floor plan is not suitable for architectural/construction and is covered under E&O. © Excelsior Measuring Inc. 2022. All rights reserved for Excelsior Measuring Inc. Users shall not publish and distribute such material (in whole or in part) and/or incorporate it in other works in any form.