

# 910 KINGS AVENUE, WEST VANCOUVER

TOTALS	
Main Floor (finished):	1,080 sq.ft.
Lower Level (finished):	815 sq.ft.
<b>TOTAL FINISHED:</b>	<b>1,895 sq.ft.</b>
Lower Level (unfinished):	265 sq.ft.
<b>TOTAL UNFINISHED:</b>	<b>265 sq.ft.</b>
<b>GRAND TOTAL:</b>	<b>2,160 sq.ft.</b>

OTHER AREAS:	
Deck:	118 sq.ft.

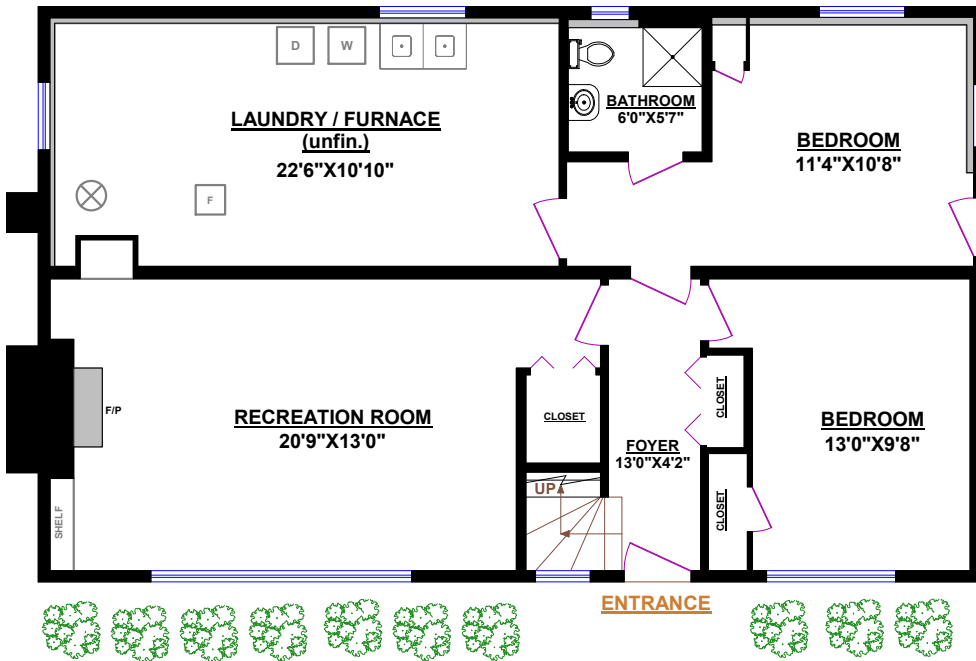


**TOM HASSAN**

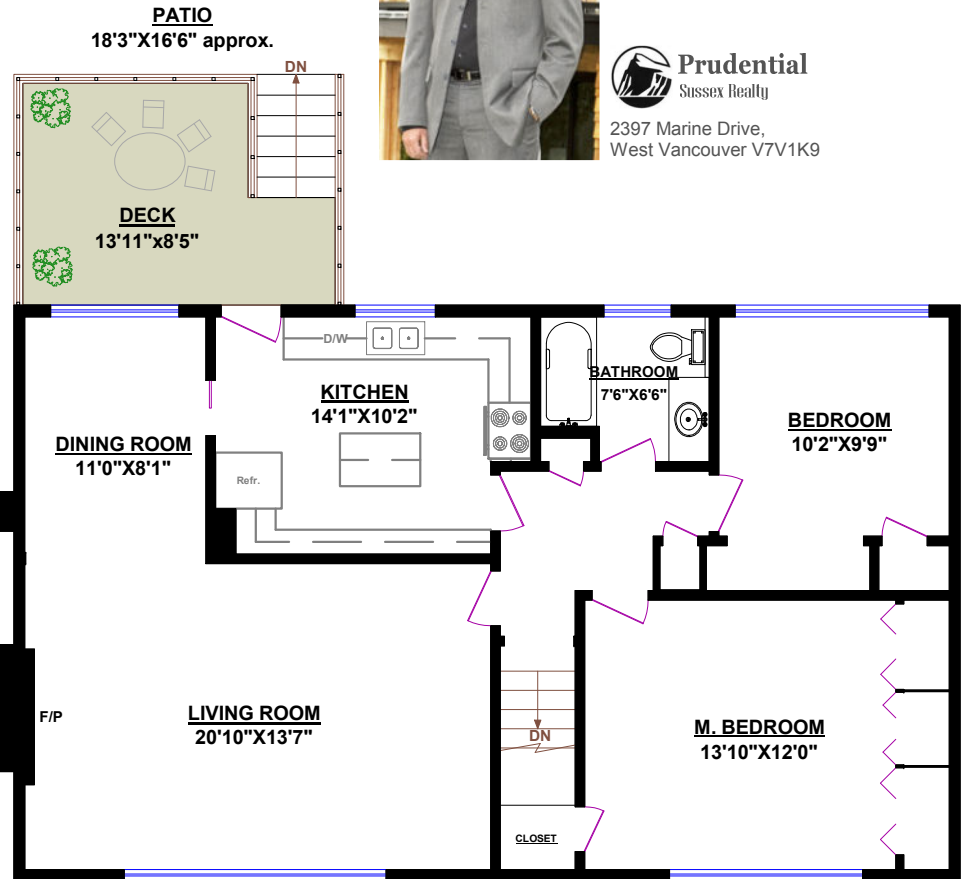
604.809.9777 cell  
tom@tomhassan.com  
www.tomhassan.com



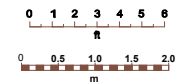
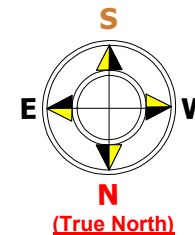
2397 Marine Drive,  
West Vancouver V7V1K9



**LOWER LEVEL**



**MAIN FLOOR**



© Vancouver Realty Support Group Inc., (604) 761-7919

[www.floorplansvancouver.com](http://www.floorplansvancouver.com)  
PREMIER PRODUCTS AND SERVICES