



TOM HASSAN
Prudential Sussex Realty

2397 Marine Drive
 West Vancouver, BC V7V 1K9
 phone: 604-809-9777
 www.tomhassan.com

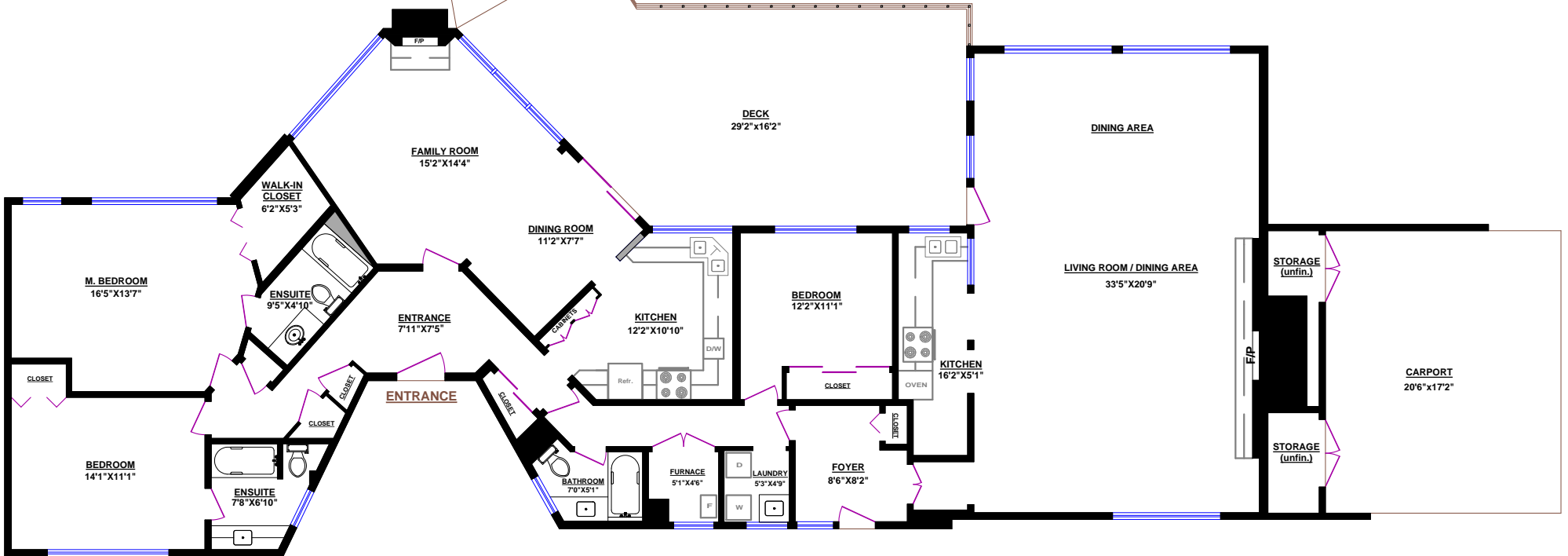
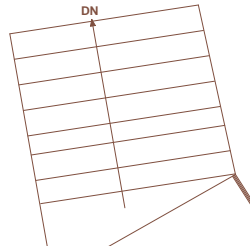


2195 SHAFTON PLACE, WEST VANCOUVER

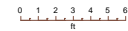
TOTALS
 Main Floor (finished): 2,501 sq.ft.
 Main Floor (unfinished): 90 sq.ft.
GRAND TOTAL: 2,591 sq.ft.

OTHER AREAS:
 Deck: 518 sq.ft.
 Carport: 353 sq.ft.

Storage (Pool): 54 sq.ft. (interior)
 Storage (Pool): 51 sq.ft. (interior)
 Change Room: 66 sq.ft. (interior)
 Pool Mech. Room: 28 sq.ft. (interior)



MAIN FLOOR



© Vancouver Realty Support Group Inc., (604) 761-7919
 www.realtorsupport.com
 www.floorplansvancouver.com