

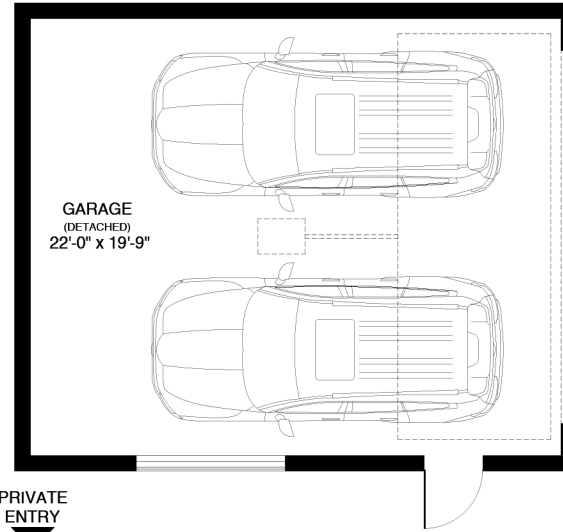


# TOM HASSAN

ROYAL LEPAGE SUSSEX - TOM HASSAN  
604-809-9777  
TOM@TOMHASSAN.COM  
WWW.TOMHASSAN.COM

## 957 Shavington Street North Vancouver, BC, V7L 1K6

Year Built: 2015  
BC Assessment: 2,168 Sq Ft  
Land Size: 8,450 Sq Ft



UPPER FLOOR: 1,156 SQ FT

3 BEDROOMS + 1 BATHROOM

LOWER FLOOR: 1,200 SQ FT

1 BEDROOM + 1 BATHROOM

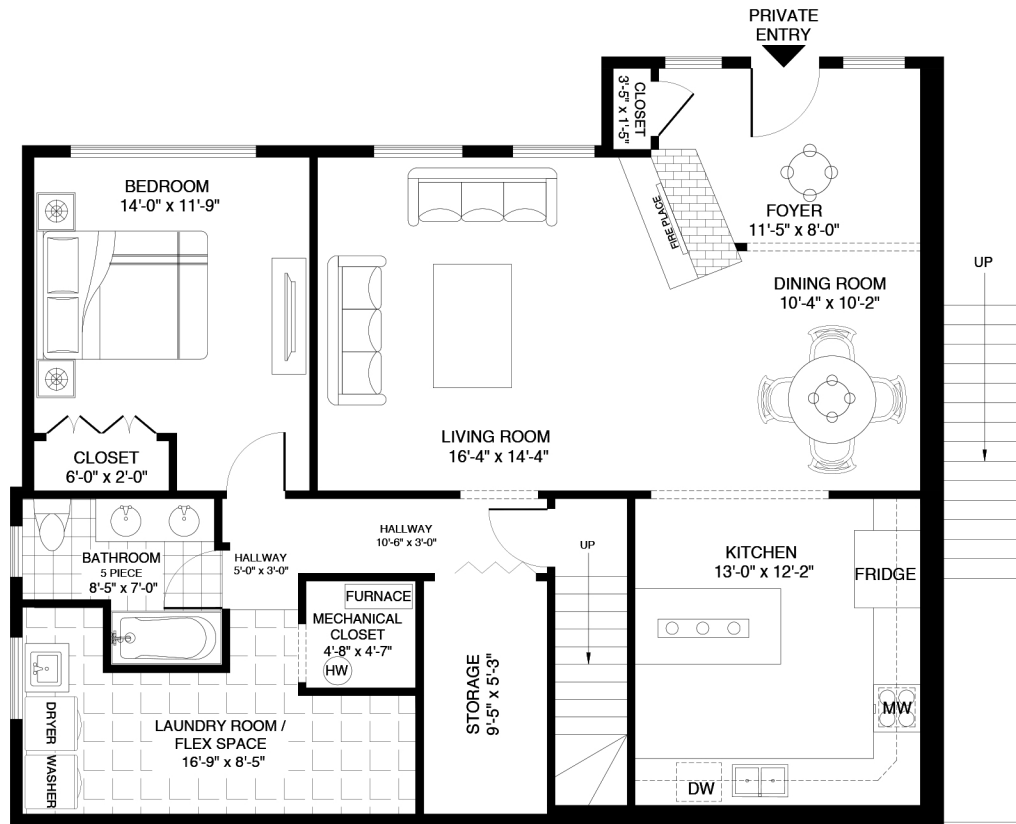
TOTAL INTERIOR: 2,356 SQ FT

TOTAL: 4 BEDROOMS + 2 BATHROOMS

TOTAL EXTERIOR: 536 SQ FT

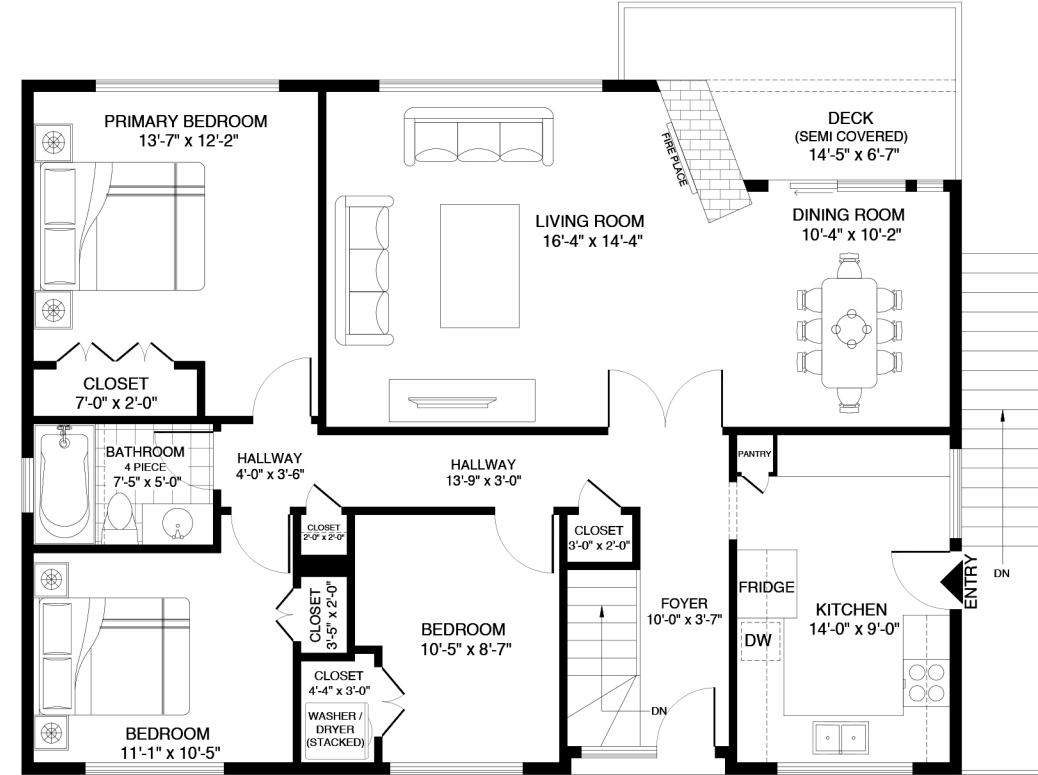
GARAGE: 438 SQ FT

DECK: 98 SQ FT



CEILING HEIGHT 6'-9" - 8'-0"

**LOWER FLOOR**  
1,200 SQ FT



CEILING HEIGHT 8'-0"

**UPPER FLOOR**  
1,156 SQ FT

Developed On: September 22, 2024 - Valid Until: March 22, 2025



Sussex

Booked on  
the Pixalink App™



This floor plan is intended for marketing purposes only and should not be used nor relied upon for architectural or construction. Total area is based on interior measurements including all closets and open to basements. All dimensions are shown within this floor plan are deemed to be correct. All room dimensions and room sizes will not match the total square footage. All efforts are made to ensure dimensions and room sizes are displayed accurately. BC Assessment or street plan may have been used for total square footage. This floor plan is covered under ESO (3% M.O.E) and cannot be reproduced, published, or distributed (in whole or parts) or incorporated with any other work. All room dimensions and floor areas must be considered approximate and are subject to independent verification. All rights reserved for Realty Studios & VLGRS Inc. Six inch walls were used for all floors. Garage was measured from outside.