



**TOM HASSAN**

604.809.9777 cell

tom@tomhassan.com

www.tomhassan.com

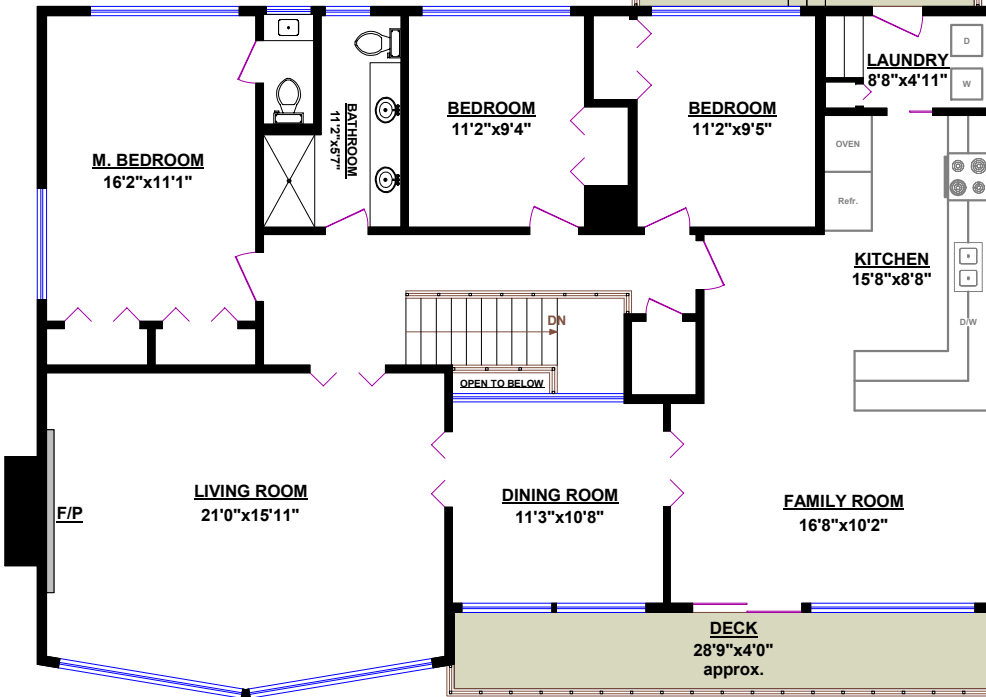
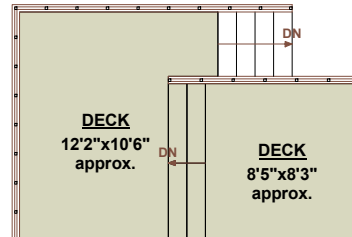
**ROYAL LEPAGE** **Sussex**

2397 Marine Drive,  
West Vancouver V7V 1K9

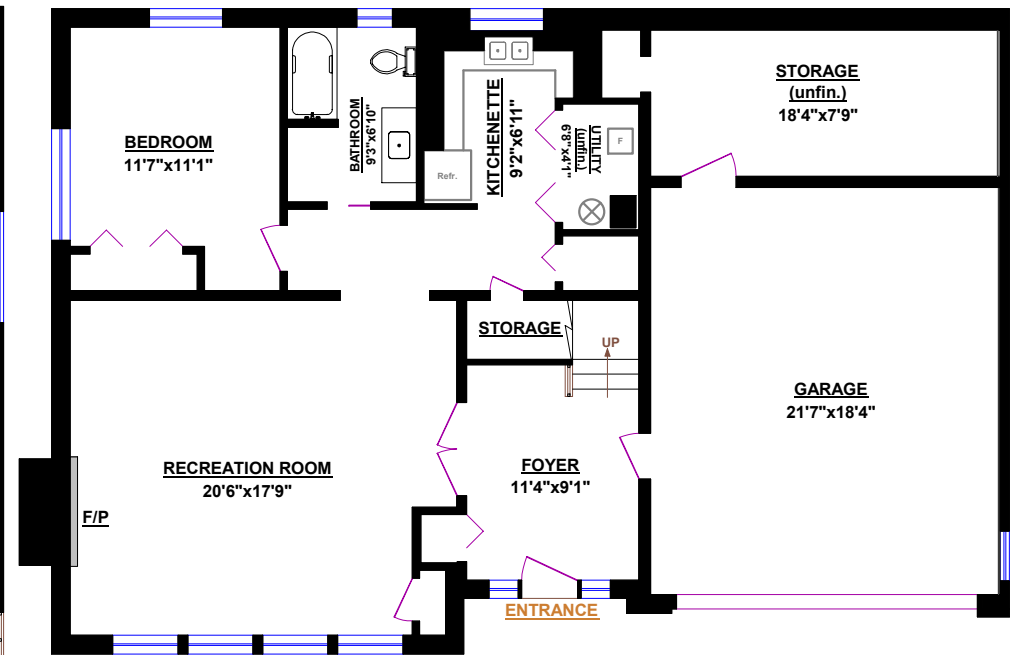
**550 CRESTWOOD AVENUE  
NORTH VANCOUVER**

TOTALS	
Main Floor (finished):	1,704 sq.ft.
Lower Level (finished):	1,012 sq.ft.
<b>TOTAL FINISHED:</b>	<b>2,716 sq.ft.</b>
Lower Level (unfinished):	224 sq.ft.
<b>TOTAL UNFINISHED:</b>	<b>224 sq.ft.</b>
<b>GRAND TOTAL:</b>	<b>2,940 sq.ft.</b>

OTHER AREAS:	
Garage:	424 sq.ft.



**MAIN FLOOR**



**LOWER LEVEL**

