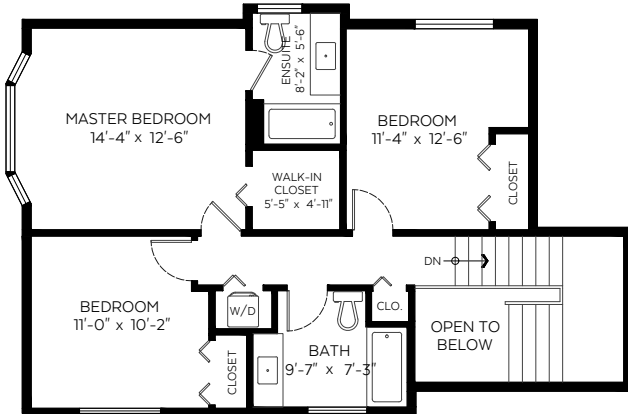


- TOM HASSAN -

604.809.9777 tom@tomhassan.com
 Royal LePage Sussex www.tomhassan.com

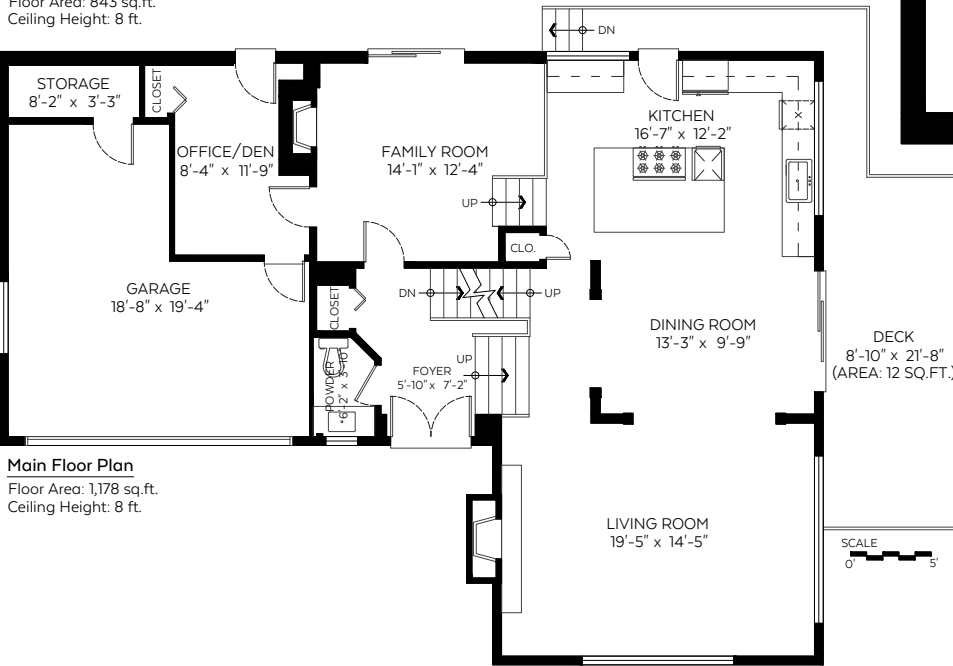
572 Saint Giles Road,
 West Vancouver, B.C.

Main Floor:	1,178 sq.ft.
Upper Floor:	843 sq.ft.
Lower Floor:	1,049 sq.ft.
Total:	3,070 sq.ft.
Open to Below:	102 sq.ft.



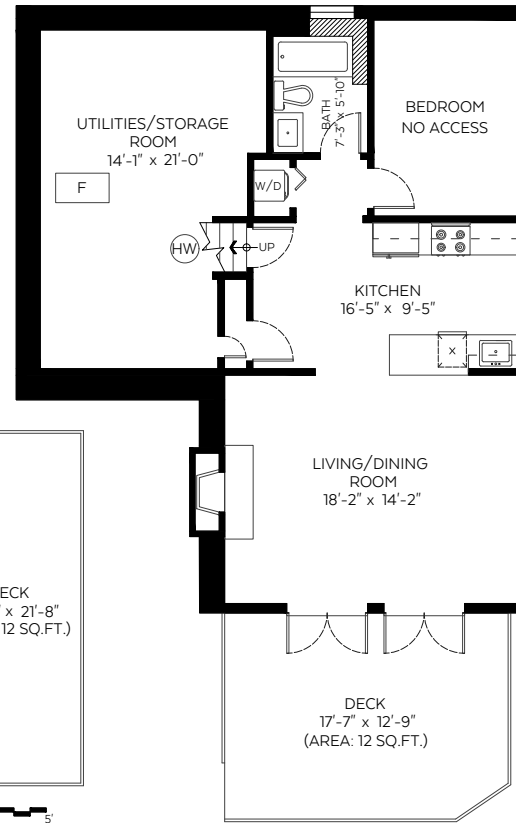
Upper Floor Plan

Floor Area: 843 sq.ft.
 Ceiling Height: 8 ft.



Main Floor Plan

Floor Area: 1,178 sq.ft.
 Ceiling Height: 8 ft.

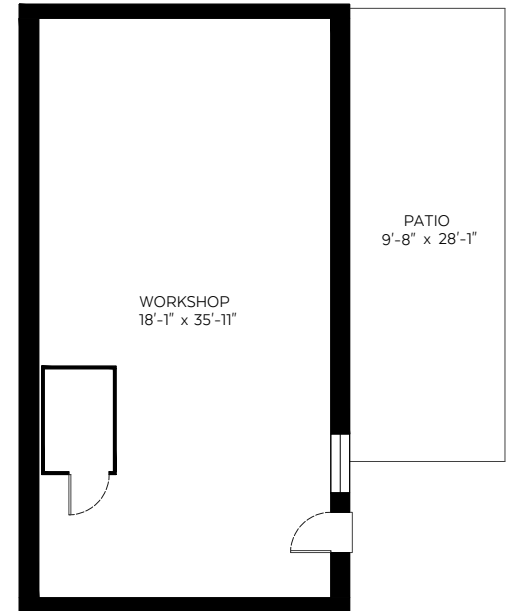


Lower Floor Plan

Floor Area: 1,049 sq.ft.
 Ceiling Height: 8 ft.

Auxiliary Area

Garage:	348 sq.ft.
Patio:	270 sq.ft.
Decks:	480 sq.ft.
Workshop:	771 sq.ft.



The floor plan is not suitable for architectural/construction and is covered under E&O. © Excelsior Measuring Inc. 2022. All rights reserved for Excelsior Measuring Inc. Users shall not publish and distribute such material (in whole or in part) and/or incorporate it in other works in any form.

Valid Until: January 5, 2023



Booked on
 the Pixilink App™

