



TOM HASSAN

ROYAL LEPAGE SUSSEX - TOM HASSAN

604-809-9777

TOM@TOMHASSAN.COM

WWW.TOMHASSAN.COM

1370 14th Street

West Vancouver, BC, V7T 2S2

Year Built: 1983

BC Assessment: 3,132 Sq Ft

Land Size: 6,018 Sq Ft

UPPER FLOOR: 1,615 SQ FT

4 BEDROOMS + 2 BATHROOM

MAIN FLOOR: 840 SQ FT

LOWER FLOOR: 1,213 SQ FT

2 BEDROOMS + 1 BATHROOM

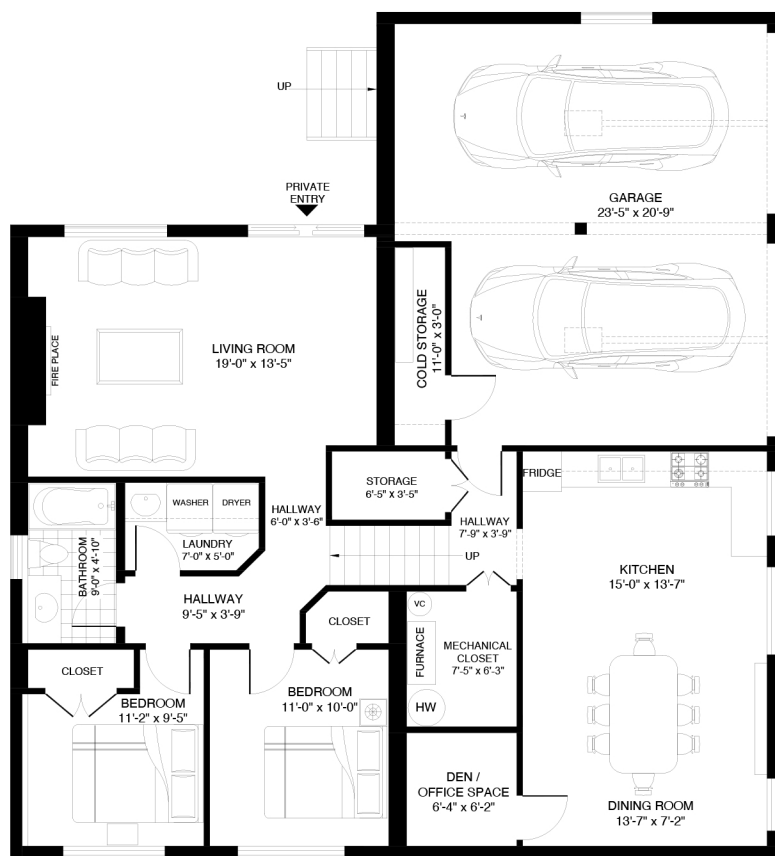
TOTAL INTERIOR: 3,668 SQ FT

TOTAL: 6 BEDROOMS + 3 BATHROOMS

TOTAL EXTERIOR: 738 SQ FT

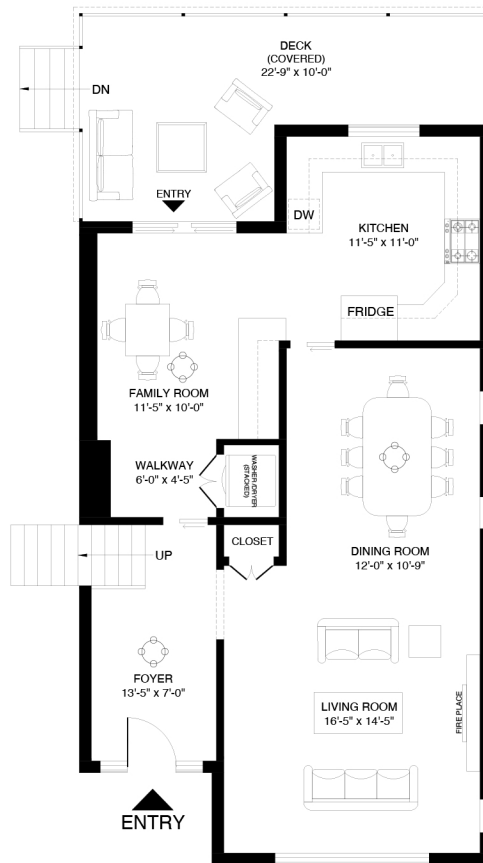
GARAGE: 509 SQ FT

DECK: 229 SQ FT



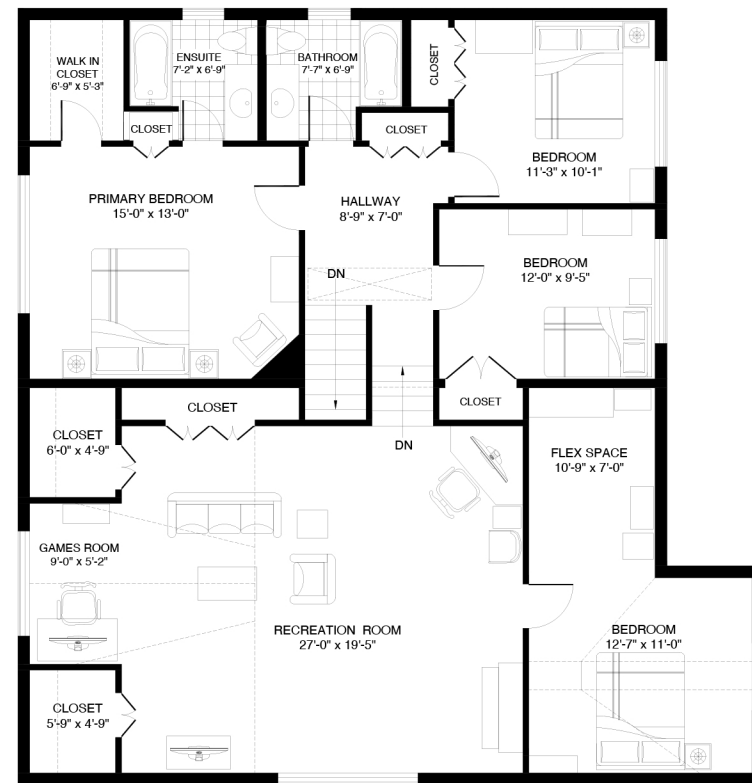
CEILING HEIGHT 8'-0" - 9'-0"

LOWER FLOOR
1,215 SQ FT



CEILING HEIGHT 8'-0"

MAIN FLOOR
840 SQ FT



CEILING HEIGHT 8'-0"

UPPER FLOOR
1,615 SQ FT



Developed On: April 29, 2024 - Valid Until: October 29, 2024



This floor plan is intended for marketing purposes only and should not be used nor relied upon for architectural or construction. Total area is based on interior measurements. Inclusive of ceiling and floor area to below areas. All information contained within this floor plan is deemed to be correct to the best of our knowledge. All room dimensions and room sizes are displayed accurately. BC Assessment or other plan may have been used for total square footage. This floor plan is covered under ESO (8% M.O.E) and cannot be reproduced, published, or distributed (in whole or parts) or incorporated with any other work. All rights reserved for Realty Studios & VLGPS Inc. Six inch walls were used for all floors and the garage.