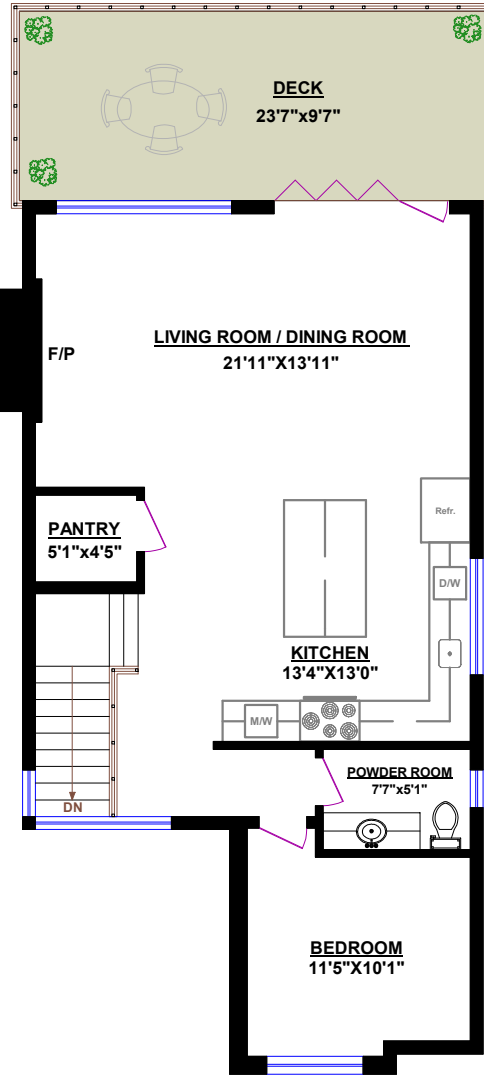
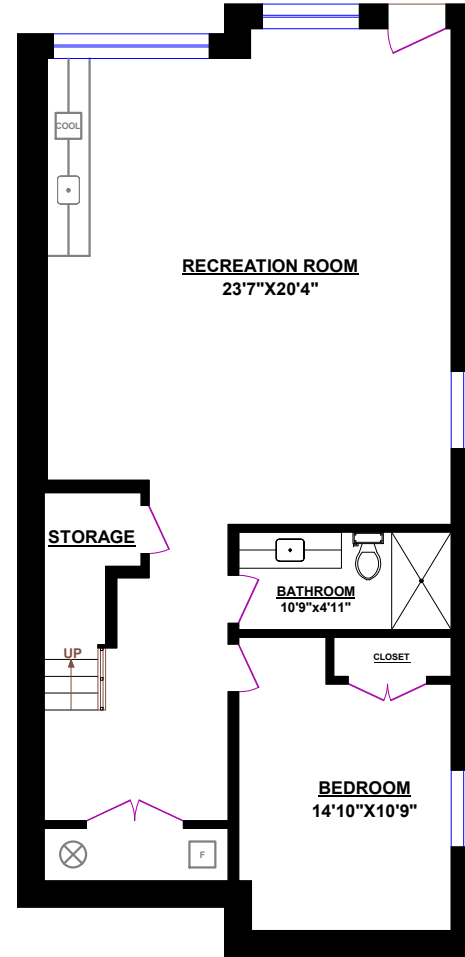


MAIN FLOOR



UPPER LEVEL



LOWER LEVEL



TOM HASSAN
 604.809.9777 cell
 tom@tomhassan.com
 www.tomhassan.com

ROYAL LEPAGE | Sussex
 2397 Marine Drive,
 West Vancouver V7V1K9

**1188 ESQUIMALT AVENUE
 WEST VANCOUVER**

TOTALS	
Main Floor (finished):	1,087 sq.ft.
Upper Level (finished):	900 sq.ft.
Lower Level (finished):	1,087 sq.ft.
TOTAL FINISHED:	3,074 sq.ft.
TOTAL UNFINISHED:	0 sq.ft.
GRAND TOTAL:	3,074 sq.ft.

OTHER AREAS:	
Garage:	392 sq.ft.

