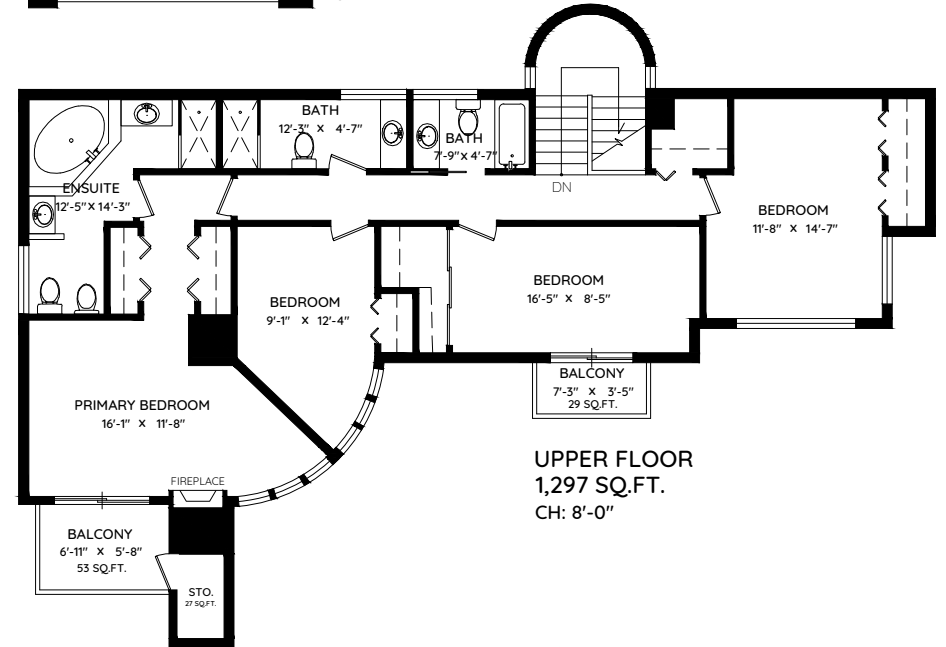
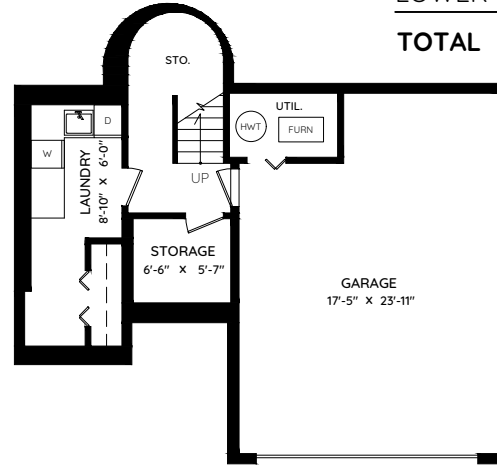
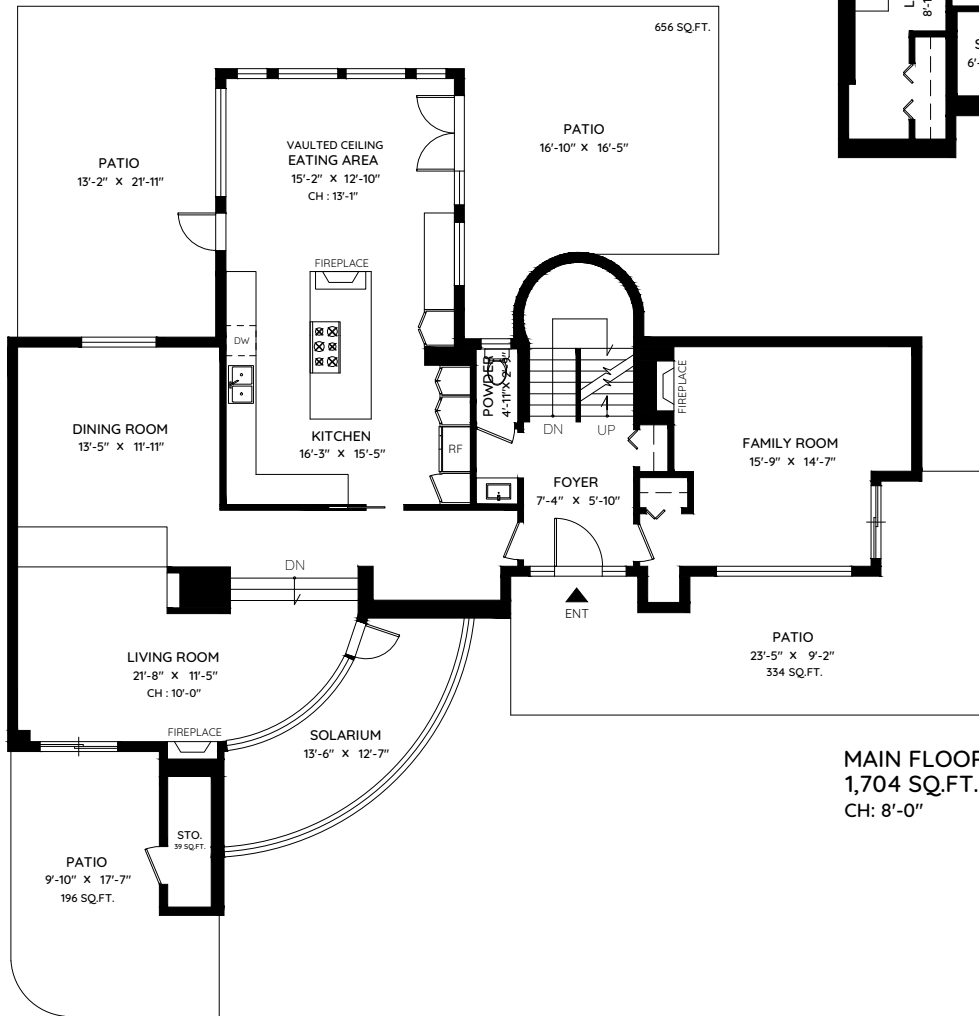


# 5703 WESTPORT WYND

WEST VANCOUVER, BC

MAIN	1,704 SQ.FT.	GARAGE	467 SQ.FT.
UPPER	1,297 SQ.FT.	BALCONY	82 SQ.FT.
LOWER	292 SQ.FT.	PATIO	1186 SQ.FT.
<b>TOTAL</b>	<b>3,293 SQ.FT.</b>	<b>STORAGE</b>	<b>66 SQ.FT.</b>
		<b>TOTAL</b>	<b>1,801 SQ.FT.</b>



**Tom Hassan**

Royal LePage Sussex  
604 809 9777  
tom@tomhassan.com



The floor plan and measurements are approximate, typically within +/- 2%. These are intended strictly for advertising purposes. They may encompass unfinished areas and are not intended for architectural or construction applications. There may be variances in the numbers if there were restrictions on property access or if taking precise measurements at the time of measuring isn't feasible. E&O insured.



Booked on the Pixilink App™

