

- TOM HASSAN -

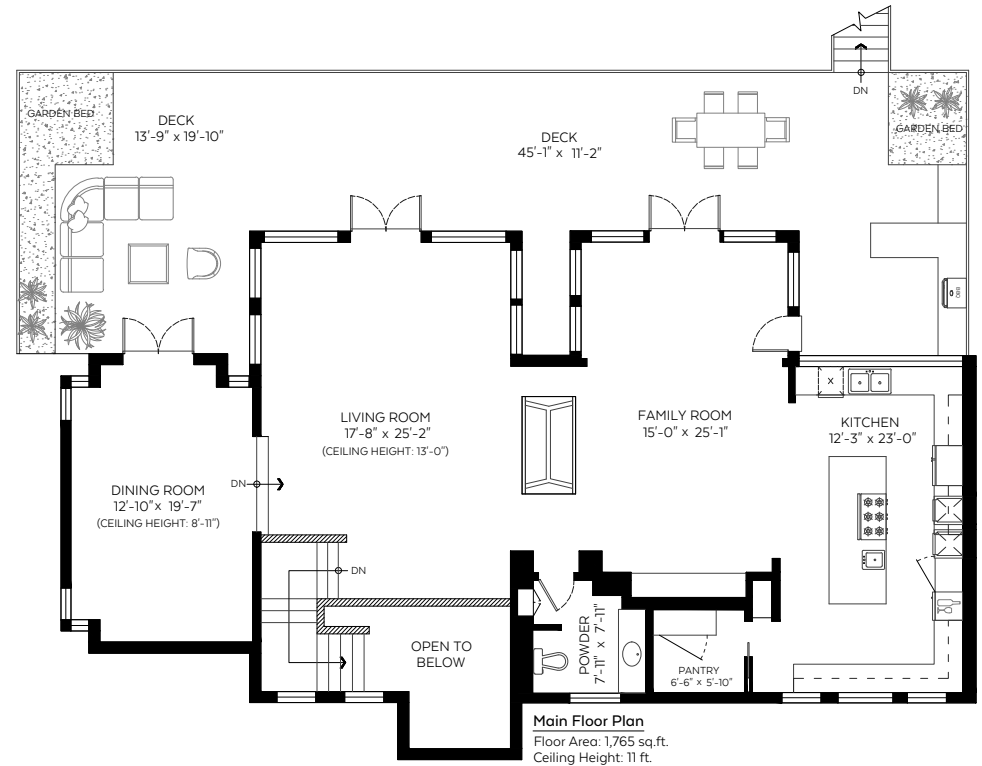
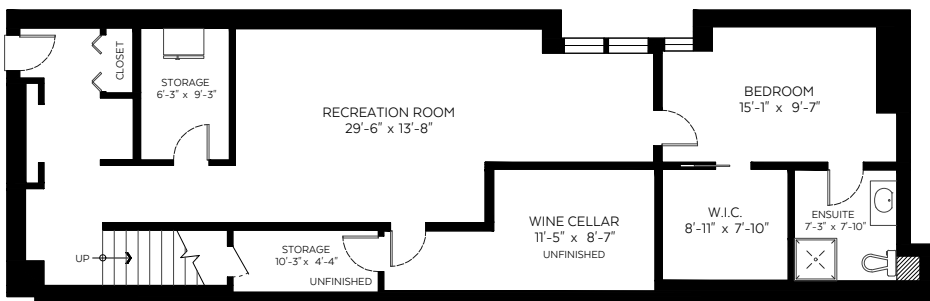
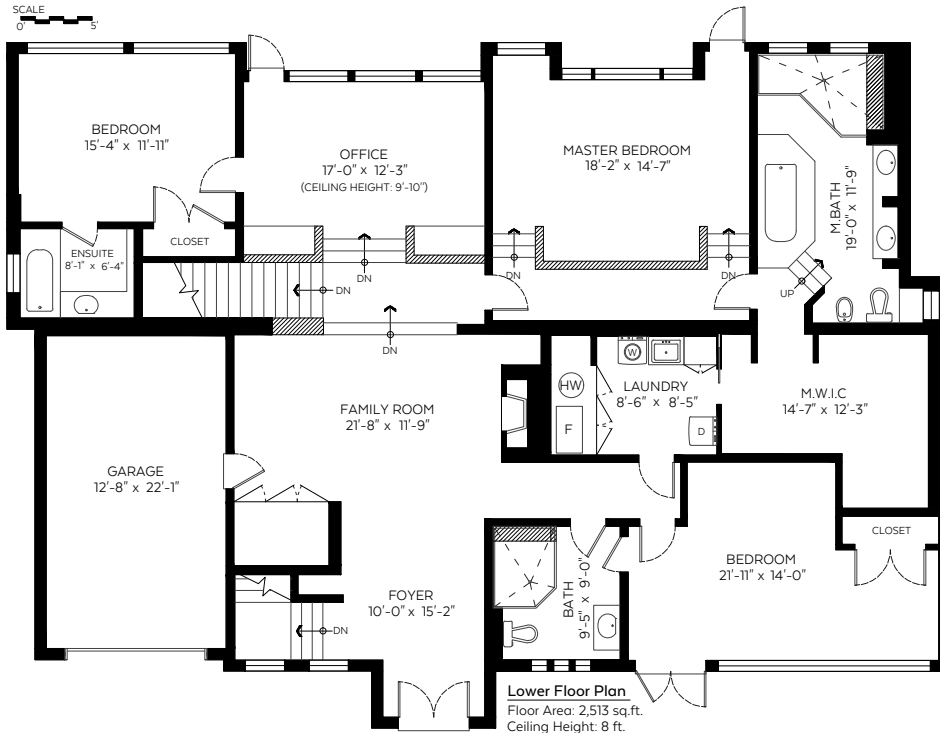
604.809.9777 tom@tomhassan.com
 Royal LePage Sussex www.tomhassan.com

2558 Queens Avenue, West Vancouver, B.C.

Main Floor:	1,765 sq.ft.
Lower Floor:	2,513 sq.ft.
Basement Floor:	1,309 sq.ft.
Total:	5,587 sq.ft.
Open to Below:	109 sq.ft.

Auxiliary Area

Garage:	308 sq.ft.
Deck:	911 sq.ft.



Valid Until: January 18, 2022

The floor plan is not suitable for architectural/construction and is covered under E&O. © Excelsior Measuring Inc. 2019. All rights reserved for Excelsior Measuring Inc. Users shall not publish and distribute such material (in whole or in part) and/or incorporate it in other works in any form.



Booked on
 the Pixilink App™

