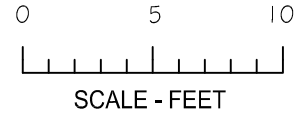




Tom Hassan

604.809.9777

tom@northshorehome.ca
www.northshorehome.ca

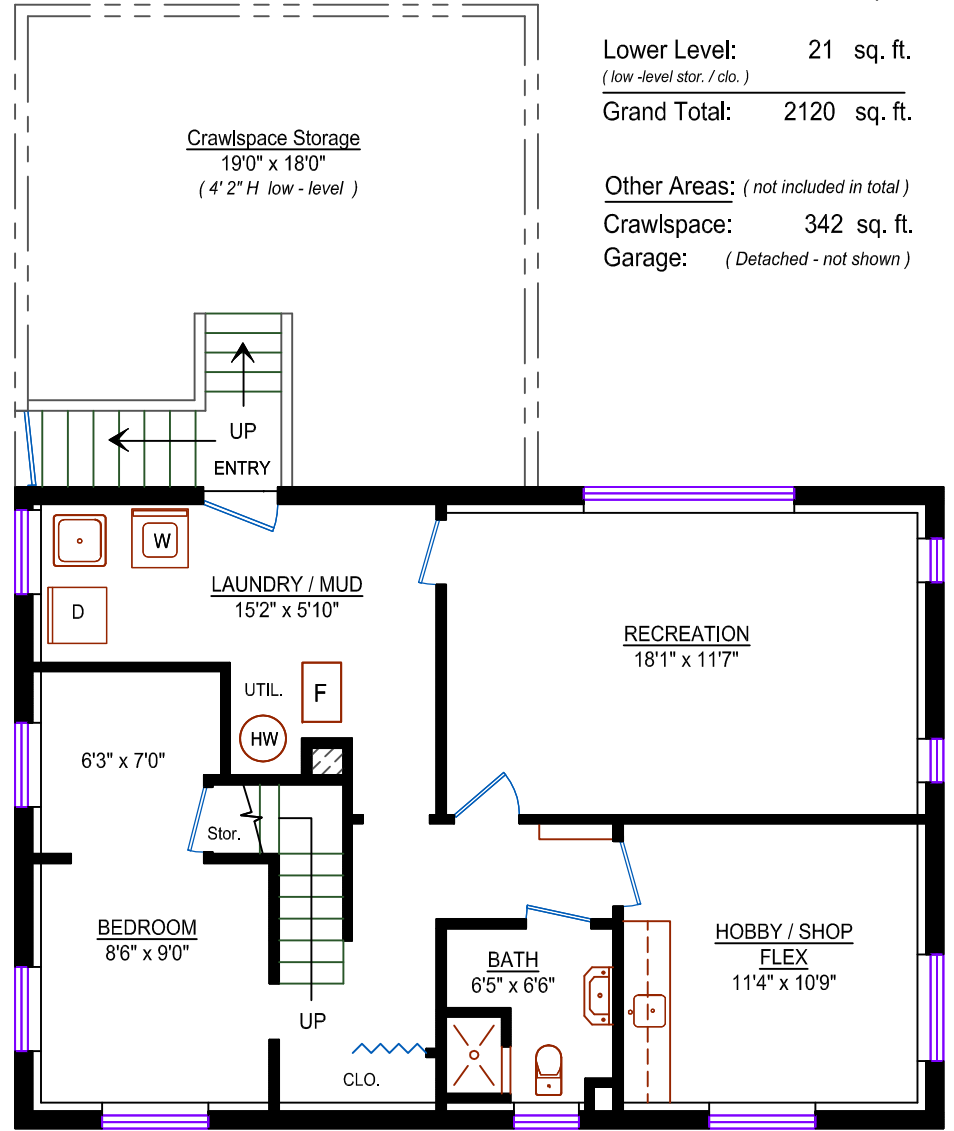
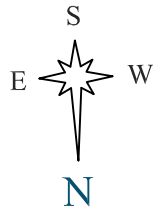
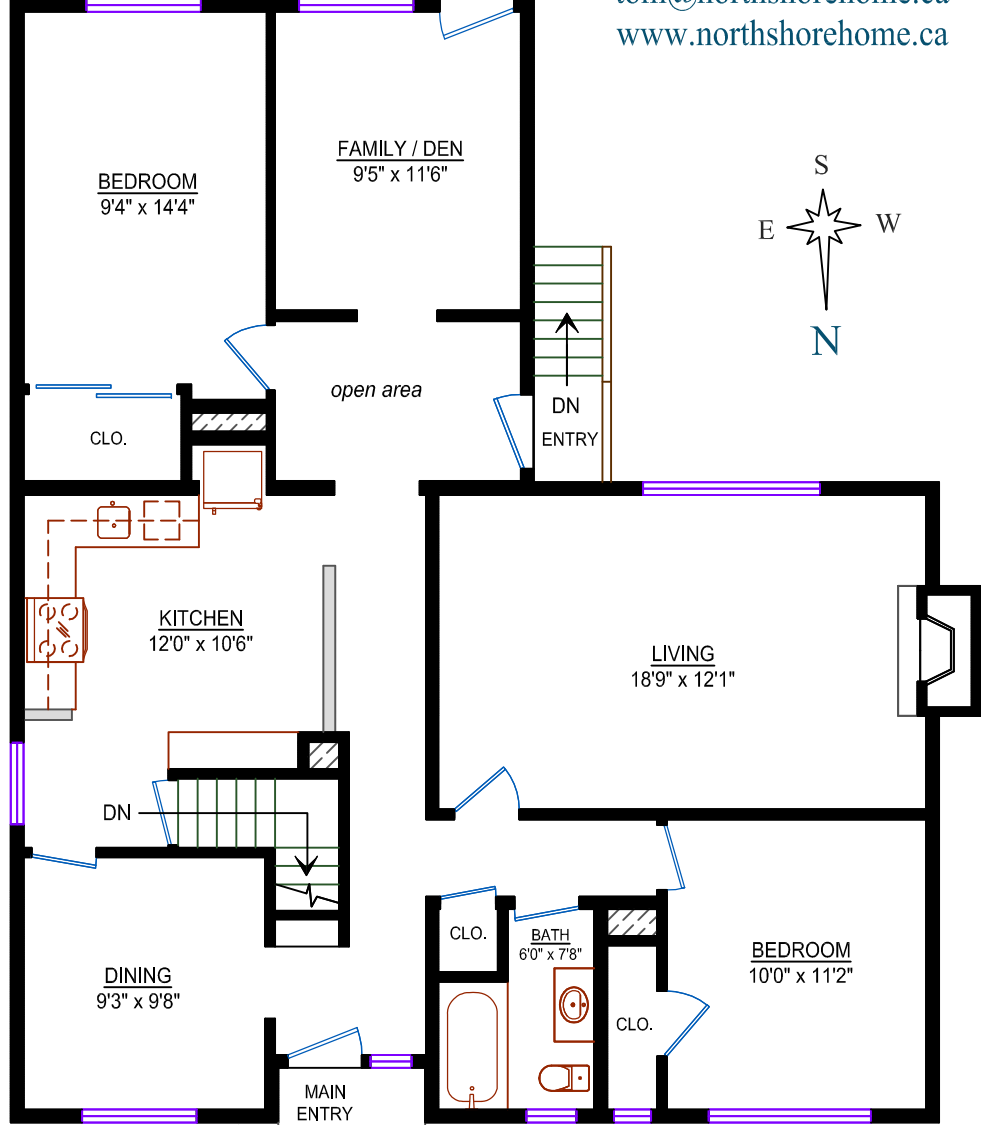
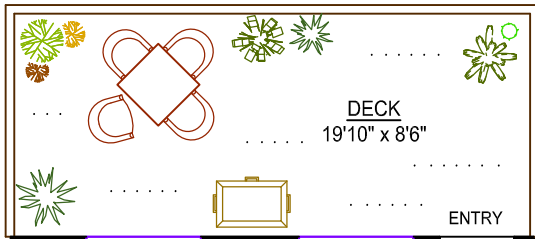


1240 Inglewood Ave.
W. Vancouver, BC

Main Level: 1240 sq. ft.
Lower Level: 859 sq. ft.
Total: 2099 sq. ft.

Lower Level: 21 sq. ft.
(low-level stor. / clo.)
Grand Total: 2120 sq. ft.

Other Areas: (not included in total)
Crawspace: 342 sq. ft.
Garage: (Detached - not shown)



MAIN LEVEL
Area: 1240 sq. ft.

LOWER LEVEL
Area: 859 / 21 sq. ft.

Design Ideas 4u
Floorplans - Design
604 - 862 - 5914

* room dimensions are approximate *