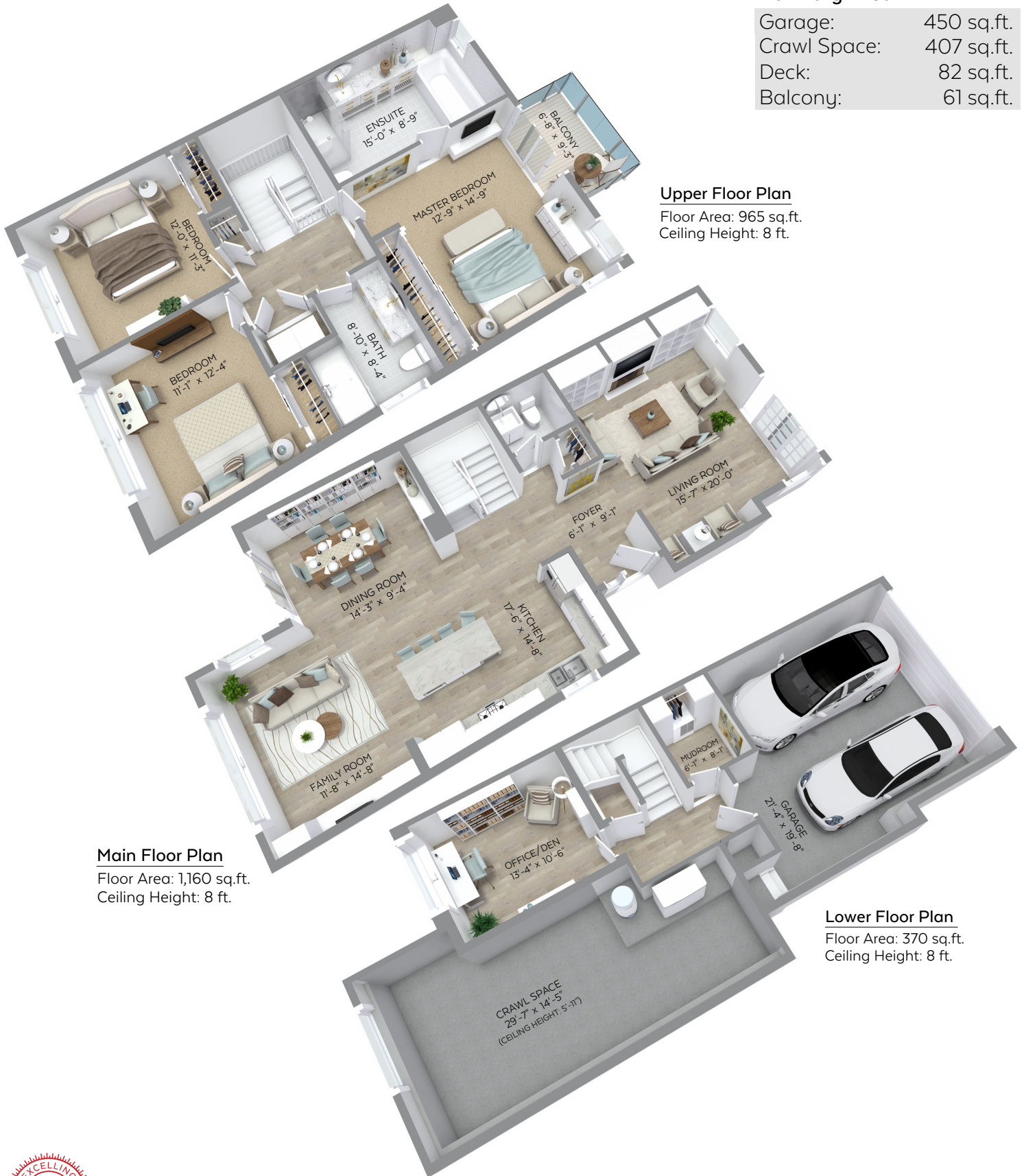


2373 MARINE DRIVE, WEST VANCOUVER, B.C.

Main Floor:	1,160 sq.ft.
Upper Floor:	965 sq.ft.
Lower Floor:	370 sq.ft.
Total:	2,495 sq.ft.

Auxiliary Area

Garage:	450 sq.ft.
Crawl Space:	407 sq.ft.
Deck:	82 sq.ft.
Balcony:	61 sq.ft.



Upper Floor Plan

Floor Area: 965 sq.ft.
Ceiling Height: 8 ft.

Main Floor Plan

Floor Area: 1,160 sq.ft.
Ceiling Height: 8 ft.

Lower Floor Plan

Floor Area: 370 sq.ft.
Ceiling Height: 8 ft.

