

360 MOYNE DRIVE WEST VANCOUVER



TOM HASSAN

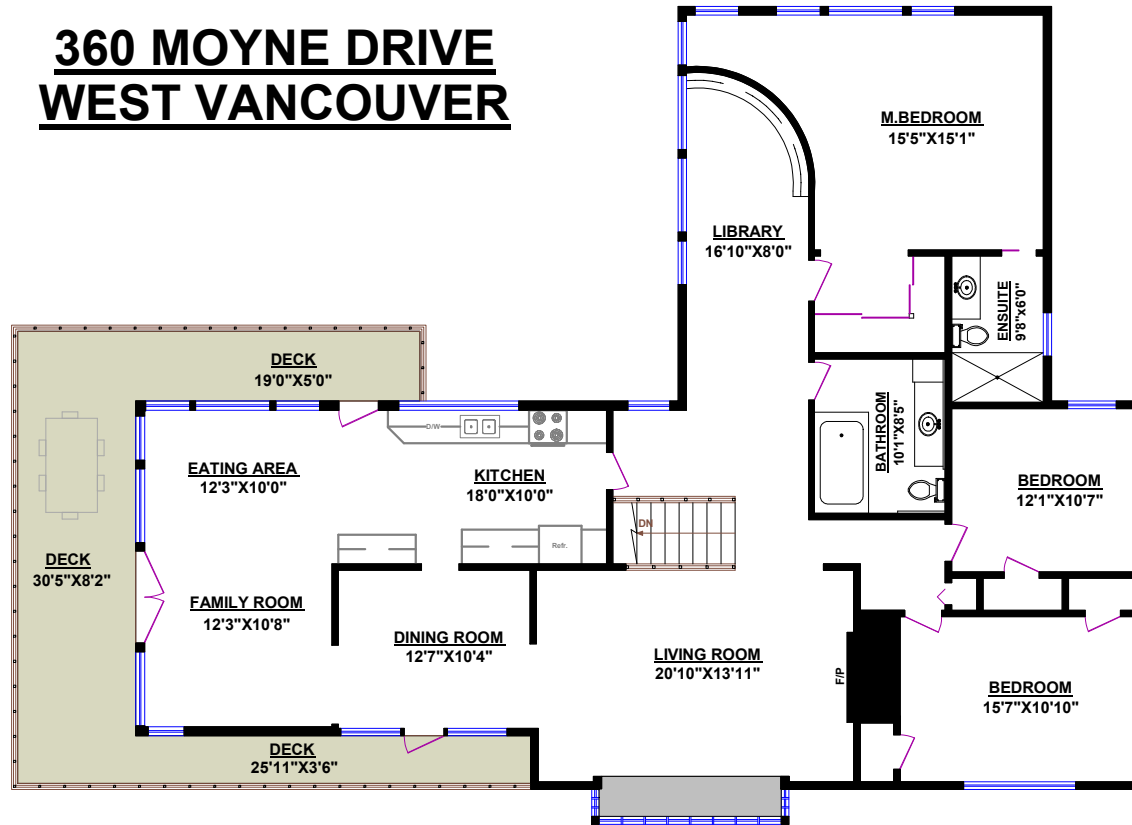
604.809.9777 cell

tom@tomhassan.com

www.tomhassan.com

ROYAL LEPAGE **Sussex**

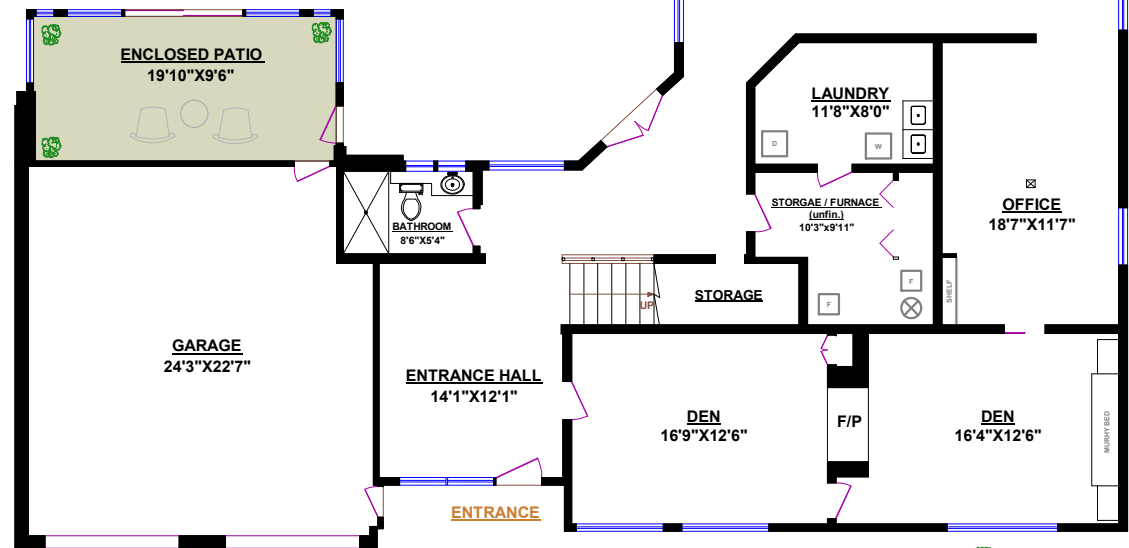
2397 Marine Drive,
West Vancouver V7V1K9



MAIN FLOOR

TOTALS	
Main Floor (finished):	2,229 sq.ft.
Lower Level (finished):	1,865 sq.ft.
TOTAL FINISHED:	4,094 sq.ft.
Lower Level (unfinished):	102 sq.ft.
TOTAL UNFINISHED:	102 sq.ft.
GRAND TOTAL:	4,196 sq.ft.

OTHER AREAS:	
Garage:	583 sq.ft.
Enclosed Patio:	206 sq.ft.
Deck:	434 sq.ft.



LOWER LEVEL

