

# 1895 26TH STREET, WEST VANCOUVER, B.C.

Main Floor: 2,696 sq.ft.  
Upper Floor: 1,216 sq.ft.  
Lower Floor: 1,032 sq.ft.

**Total: 4,944 sq.ft.**

Restricted H.R.: 31 sq.ft.

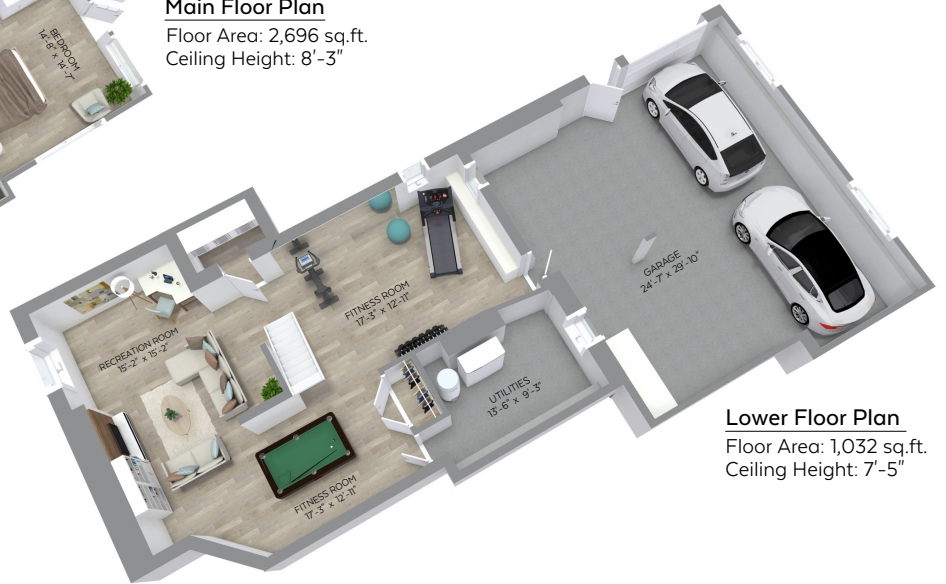
## Auxiliary Area

Garage: 806 sq.ft.  
Deck: 828 sq.ft.  
Balcony: 72 sq.ft.



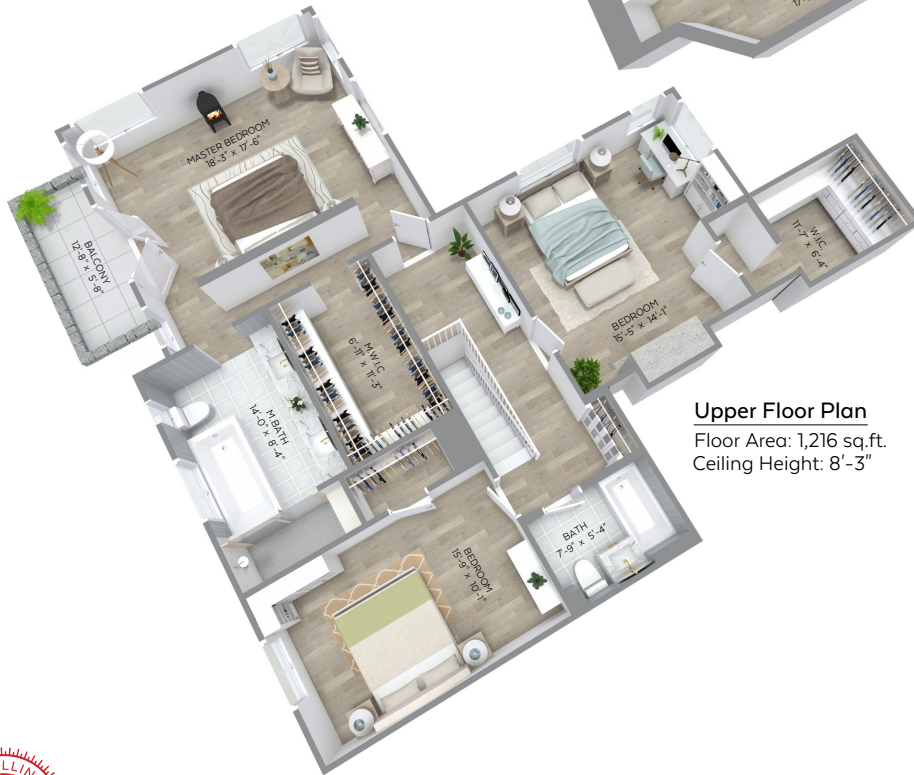
### Main Floor Plan

Floor Area: 2,696 sq.ft.  
Ceiling Height: 8'-3"



### Lower Floor Plan

Floor Area: 1,032 sq.ft.  
Ceiling Height: 7'-5"



### Upper Floor Plan

Floor Area: 1,216 sq.ft.  
Ceiling Height: 8'-3"





1895 26TH STREET,  
WEST VANCOUVER, B.C.

MAIN FLOOR - 2,696 SQ.FT.  
TOTAL - 4,944 SQ.FT.



The floor plan is not suitable for architectural/construction and is covered under E&O. © Excelsior Measuring Inc. 2019. All rights reserved for Excelsior Measuring Inc. Users shall not publish and distribute such material (in whole or in part) and/or incorporate it in other works in any form.



1895 26TH STREET,  
WEST VANCOUVER, B.C.

UPPER FLOOR - 1,216 SQ.FT.  
TOTAL - 4,944 SQ.FT.



The floor plan is not suitable for architectural/construction and is covered under E&O. © Excelsior Measuring Inc. 2019. All rights reserved for Excelsior Measuring Inc. Users shall not publish and distribute such material (in whole or in part) and/or incorporate it in other works in any form.

1895 26TH STREET,  
WEST VANCOUVER, B.C.

LOWER FLOOR - 1,032 SQ.FT.  
TOTAL - 4,944 SQ.FT.



The floor plan is not suitable for architectural/construction and is covered under E&O. © Excelsior Measuring Inc. 2019. All rights reserved for Excelsior Measuring Inc. Users shall not publish and distribute such material (in whole or in part) and/or incorporate it in other works in any form.