



TOM HASSAN
Prudential Sussex Realty

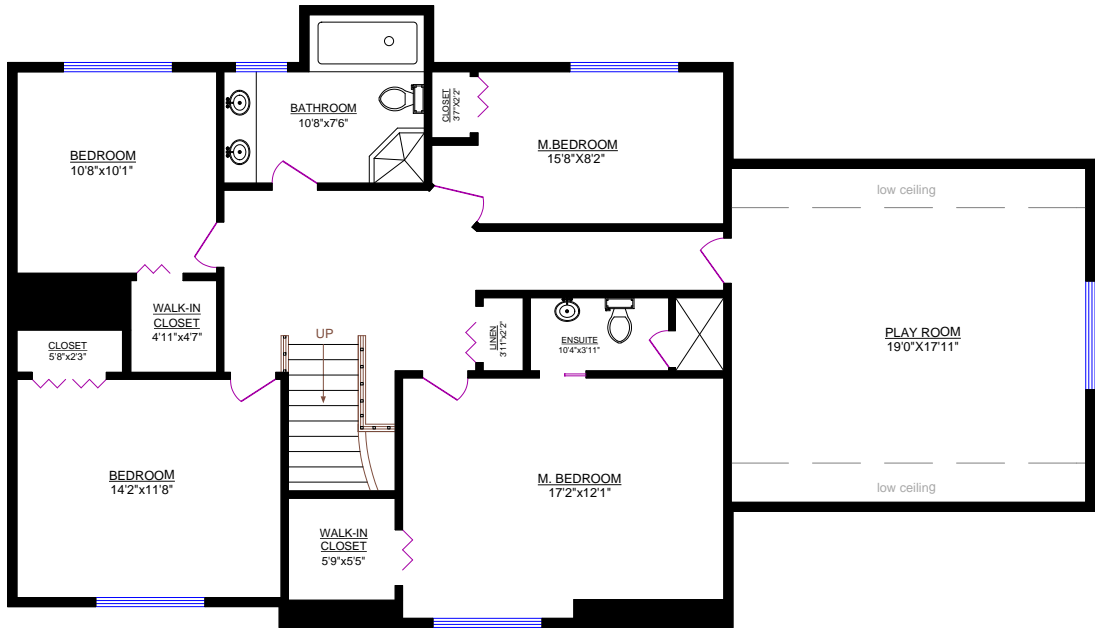
2397 Marine Drive
West Vancouver, BC V7V 1K9
phone: (604) 925-2911
www.northshorehome.ca



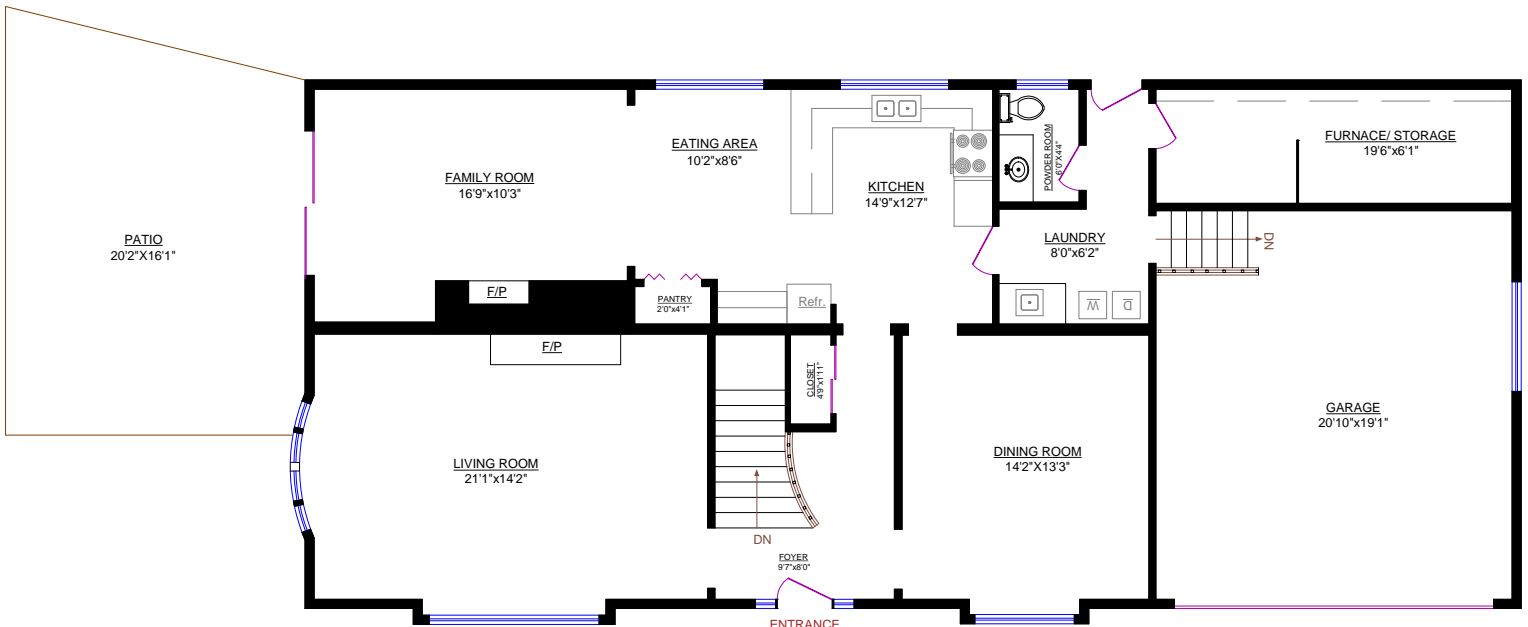
465 KEITH ROAD, WEST VANCOUVER

Main Floor: 1,445 sq.ft. OTHER AREAS:
Upper Level*: 1,443 sq.ft. Patio: 337 sq.ft.
TOTAL: 2,888 sq.ft. Garage: 421 sq.ft.

* Does not incl. low ceiling area 101 sq.ft.



UPPER LEVEL



MAIN FLOOR

