

- TOM HASSAN -

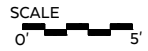
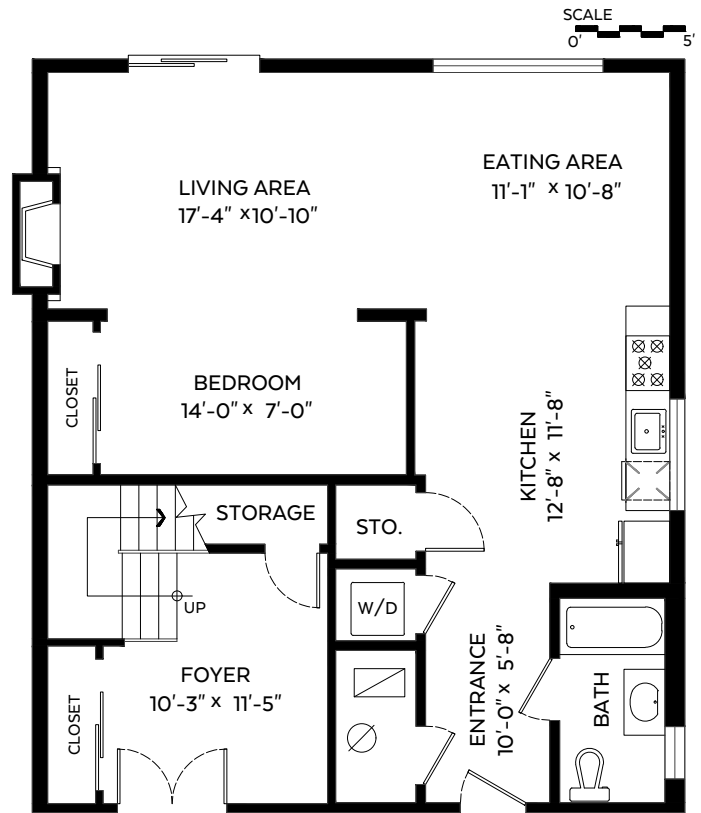
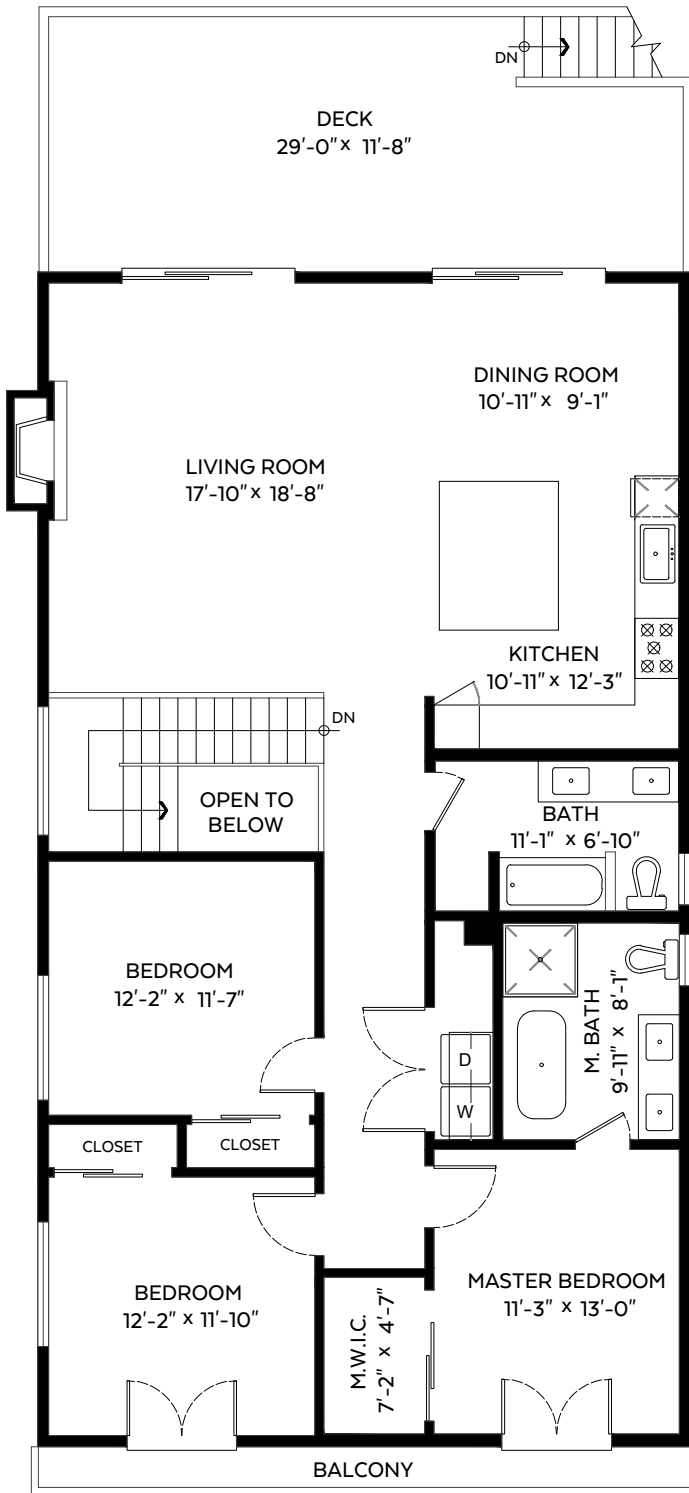
604.809.9777 tom@tomhassan.com
 Royal LePage Sussex www.tomhassan.com

6426 Rosebery Avenue,
 West Vancouver, B.C.

Main Floor:	1,572 sq.ft.
Lower Floor:	1,025 sq.ft.
Total:	2,597 sq.ft.
Open To Below:	25 sq.ft.

Auxiliary Area

Deck:	337 sq.ft.
Balcony:	67 sq.ft.



The floor plan is not suitable for architectural/construction and is covered under E&O. © Excelsior Measuring Inc. 2019. All rights reserved for Excelsior Measuring Inc. Users shall not publish and distribute such material (in whole or in part) and/or incorporate it in other works in any form.



Booked on
 the Pixilink App™

