

HOT TUB AREA
19'2" X 18'10"
approx.

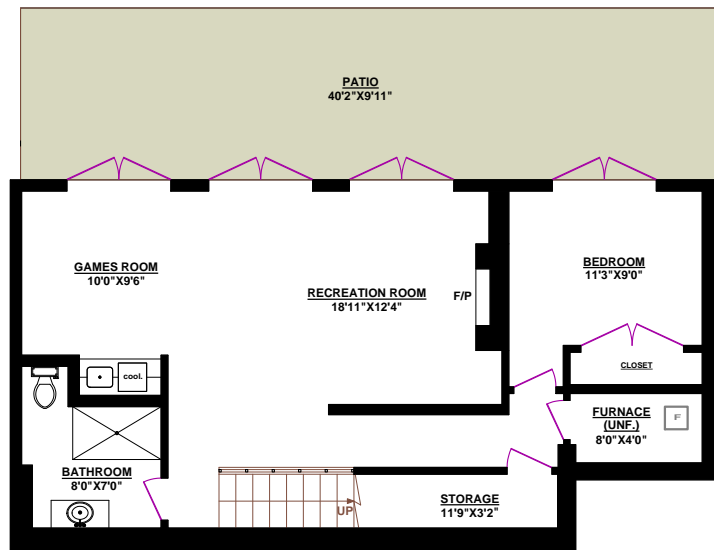
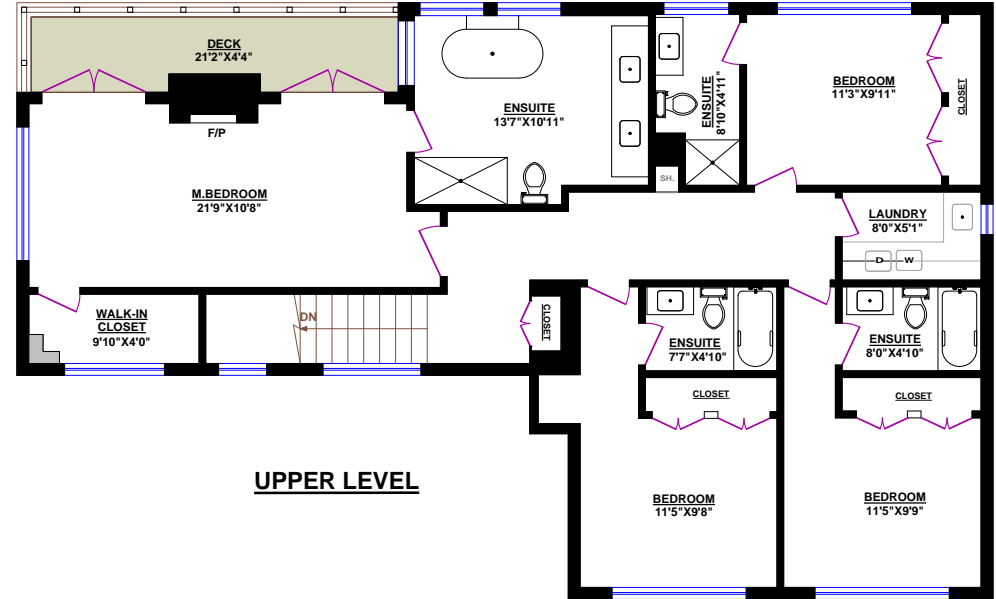


TOM HASSAN

604.809.9777 cell
tom@tomhassan.com
www.tomhassan.com



2397 Marine Drive,
West Vancouver V7V1K9



2730 ROSEBERY AVENUE, WEST VANCOUVER

TOTALS
Main Floor (finished): 1,126 sq.ft.
Upper Level (finished): 1,429 sq.ft.
Lower Level (finished): 807 sq.ft.
TOTAL FINISHED: 3,362 sq.ft.
Lower Level (unfinished): 43 sq.ft.
GRAND TOTAL: 3,405 sq.ft.

OTHER AREAS:
Garage: 417 sq.ft.
Deck (Main): 478 sq.ft.
Deck (Upper): 87 sq.ft.
Patio: 399 sq.ft.

