



**TOM HASSAN**

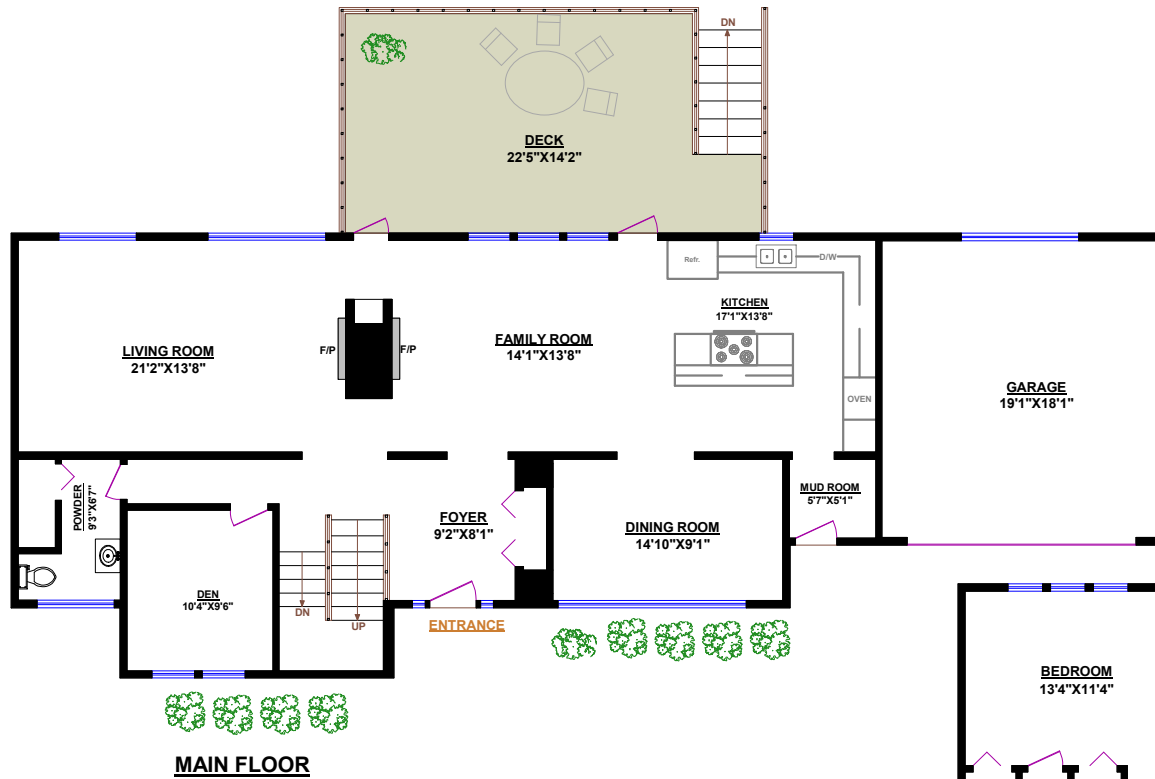
604.809.9777 cell

tom@tomhassan.com

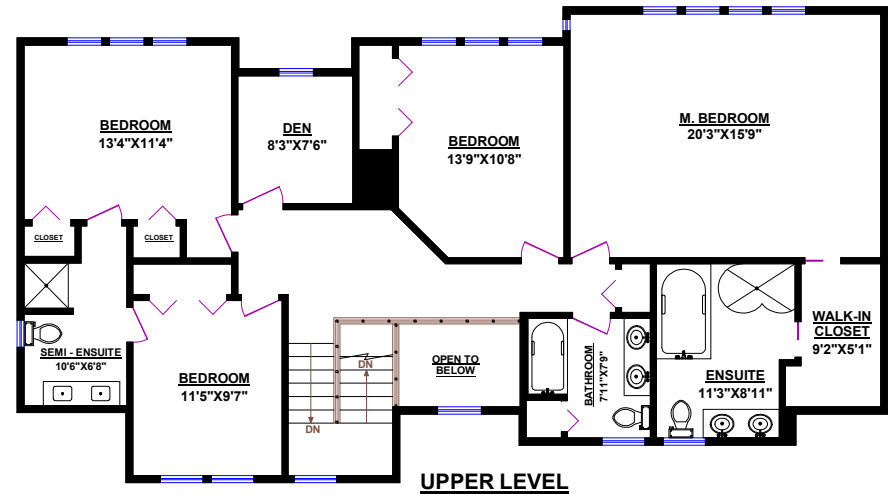
www.tomhassan.com



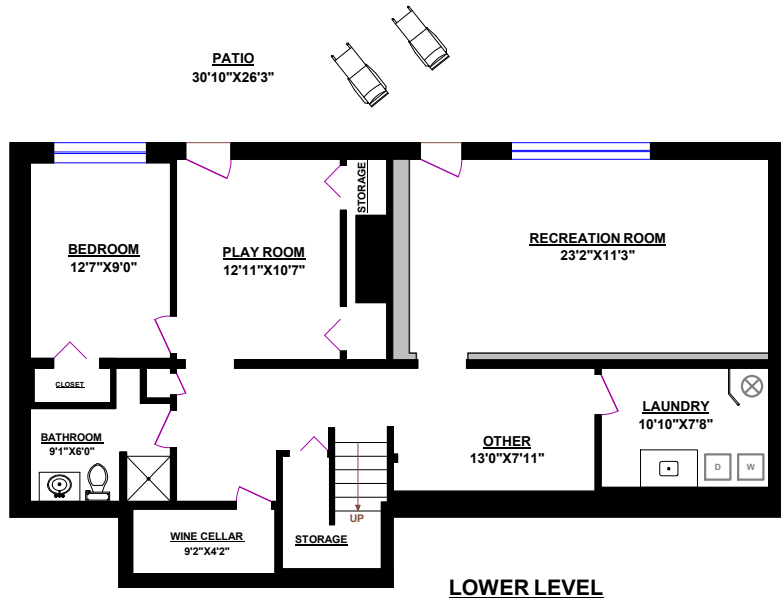
2397 Marine Drive,  
West Vancouver V7V1K9



**MAIN FLOOR**



**UPPER LEVEL**



**LOWER LEVEL**

**420 STEVENS DRIVE, WEST VANCOUVER**

TOTALS	
Main Floor (finished):	1,414 sq.ft.
Upper Level (finished):	1,456 sq.ft.
Lower Level (finished):	1,294 sq.ft.
TOTAL FINISHED:	4,164 sq.ft.
TOTAL UNFINISHED:	0 sq.ft.
GRAND TOTAL:	4,164 sq.ft.

OTHER AREAS:	
Garage:	373 sq.ft.
Deck:	338 sq.ft.

