

**1178 ESQUIMALT AVENUE  
WEST VANCOUVER**



**TOM HASSAN**

604.809.9777 cell

tom@tomhassan.com

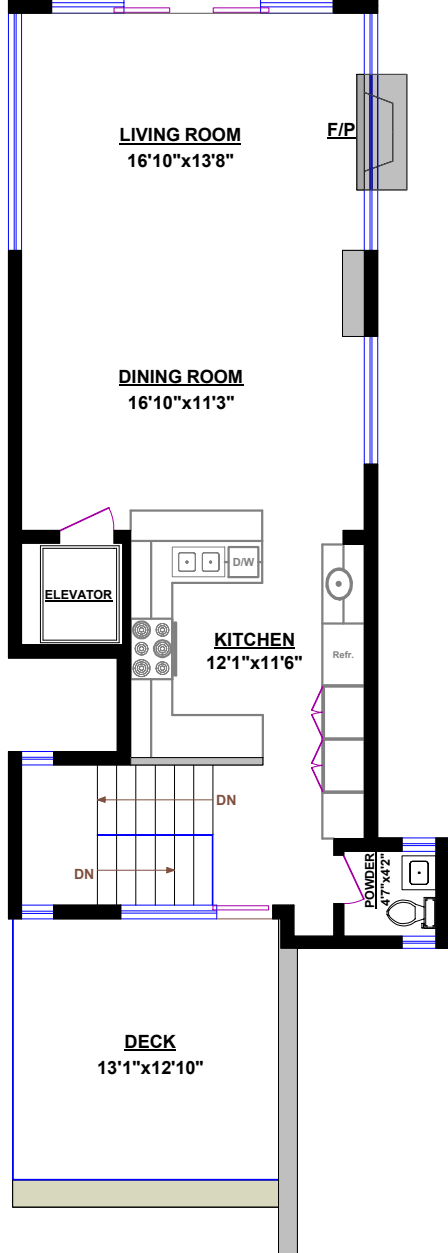
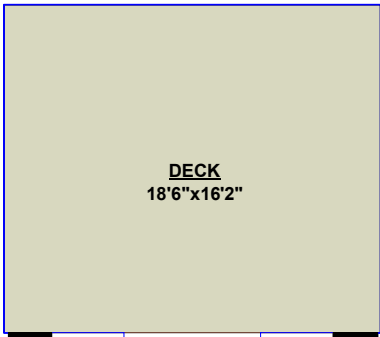
www.tomhassan.com

**ROYAL LEPAGE** **Sussex**

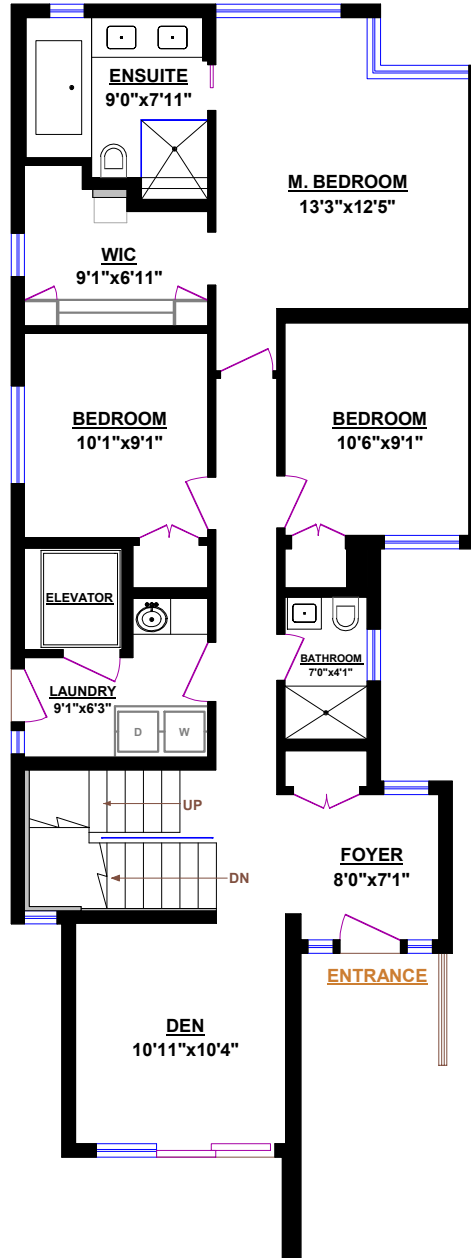
2397 Marine Drive,  
West Vancouver V7V 1K9

TOTALS	
Main Floor (finished):	1,121 sq.ft.
Upper Level (finished):	833 sq.ft.
Lower Level (finished):	581 sq.ft.
<b>TOTAL FINISHED:</b>	<b>2,535 sq.ft.</b>
Lower Level (unfinished):	28 sq.ft.
<b>TOTAL UNFINISHED:</b>	<b>28 sq.ft.</b>
<b>GRAND TOTAL:</b>	<b>2,563 sq.ft.</b>

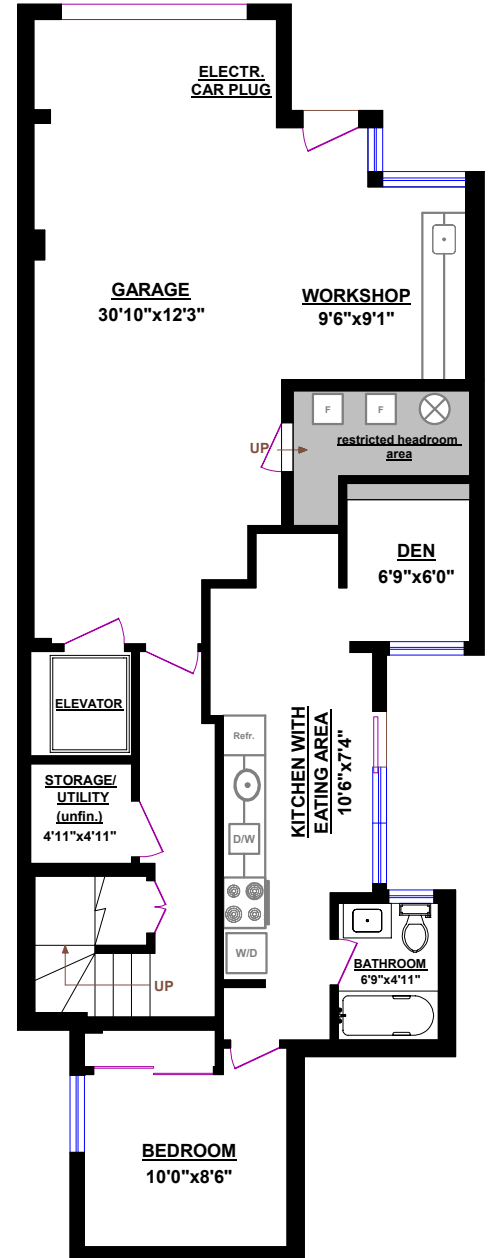
OTHER AREAS*:	
Garage & Workshop:	525 sq.ft.



**UPPER LEVEL**



**MAIN FLOOR**



**LOWER LEVEL**

for illustrative purposes only

\* Exclude(s) restricted headroom areas



© Vancouver Realty Support Group Inc., (604) 761-7919

www.floorplansvancouver.com

PREMIER PRODUCTS AND SERVICES: 2D/3D floor plans, Dynamic 3D floor plans, 3D Virtual Staging

