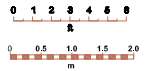


MAIN LEVEL

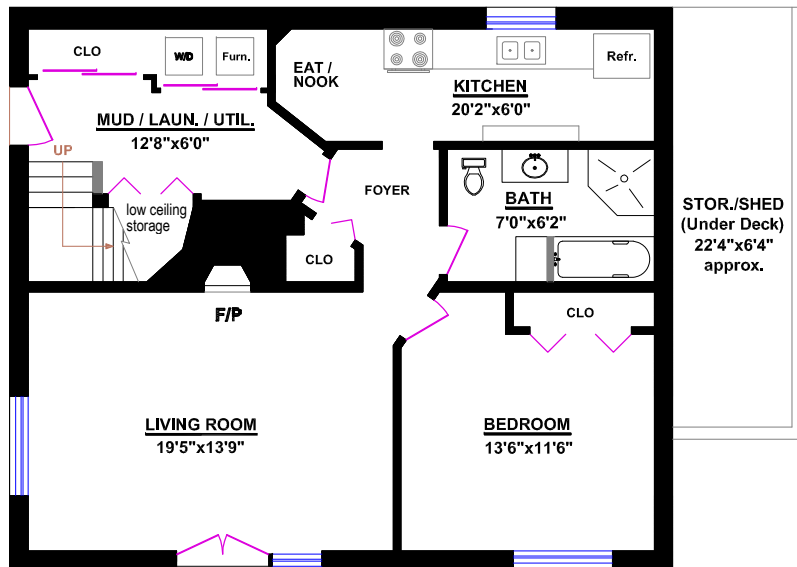
3321 Radcliffe Ave. - West Vancouver, BC

| TOTALS | |
|--------------------------|--------------------|
| Main Level (finished): | 1065 sq.ft. |
| Upper Level (finished): | 795 sq.ft. |
| Lower Level (finished): | 1038 sq.ft. |
| TOTAL FINISHED: | 2898 sq.ft. |
| TOTAL UNFINISHED: | 0 sq.ft. |
| GRAND TOTAL: | 2898 sq.ft. |

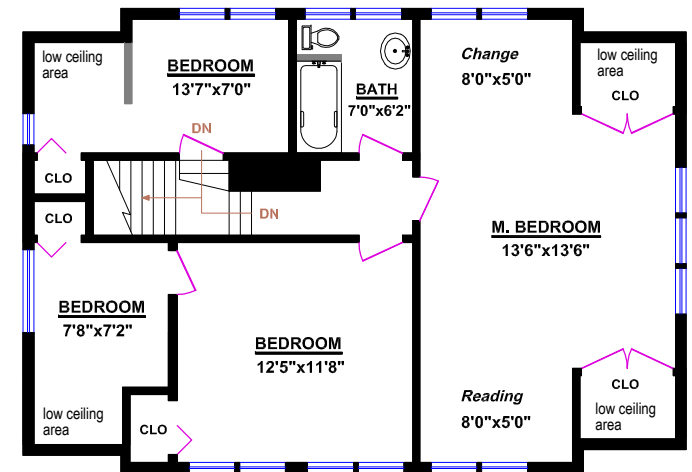
| OTHER AREAS: | | |
|---------------------------|-------------|--------------|
| Deck w/ stairs (Approx.): | 267 sq. ft. | 30'0" x 7'0" |
| Storage Shed (unfin.): | 142 sq. ft. | 22'4" x 6'4" |
| Low Ceiling Areas: | 71 sq. ft. | |



Note: excl. 71 sq. ft. low ceiling areas



LOWER LEVEL



UPPER LEVEL

