

# - TOM HASSAN -

604.809.9777 tom@tomhassan.com  
 Royal LePage Sussex www.tomhassan.com

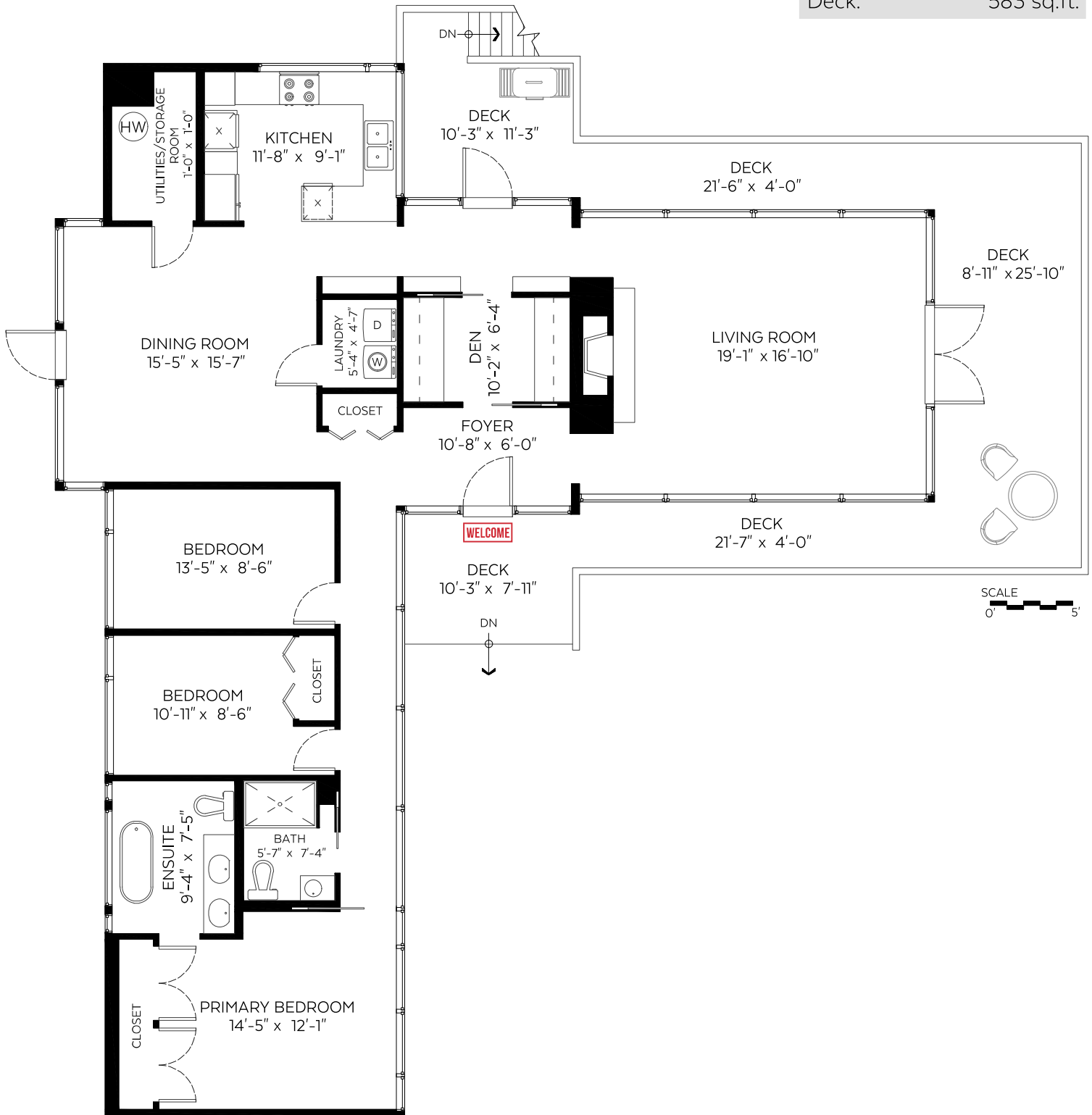
5215 Keith Road,  
 West Vancouver, B.C.

Main Floor: 1,806 sq.ft.

Ceiling Height: 8 ft.

### Auxiliary Area

Deck: 583 sq.ft.



Valid Until: November 27, 2024

The floor plan is not suitable for architectural/construction and is covered under E&O. © Excelsior Measuring Inc. 2024. All rights reserved for Excelsior Measuring Inc. Users shall not publish and distribute such material (in whole or in part) and/or incorporate it in other works in any form.



Booked on  
 the Pixilink App™

