



TOM HASSAN

604.809.9777 cell

tom@tomhassan.com

www.tomhassan.com

ROYAL LEPAGE **Sussex**

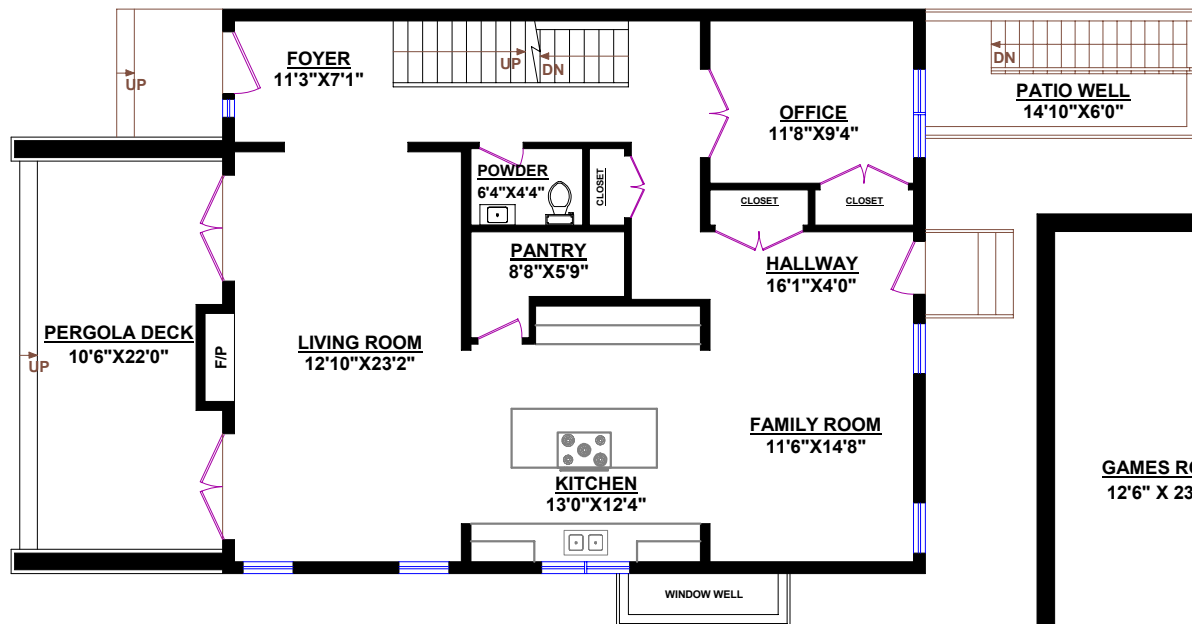
2397 Marine Drive,
West Vancouver V7V 1K9

1252 DUNCAN STREET WEST VANCOUVER

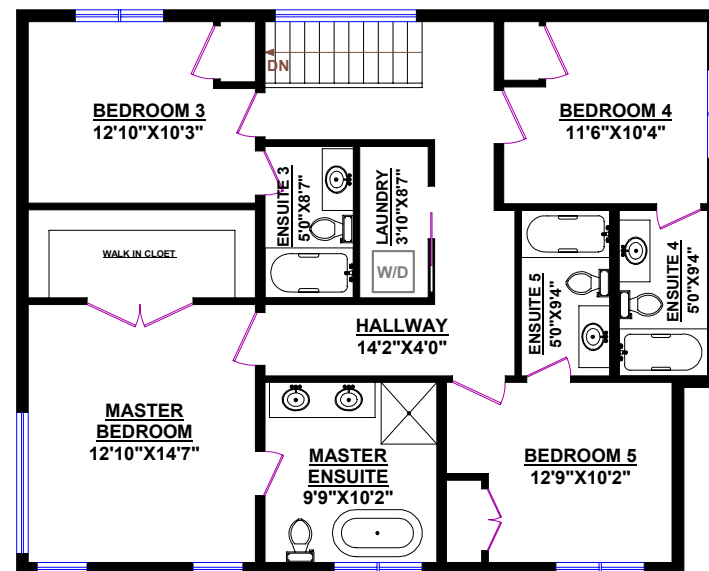
FLOOR AREAS*:

MAIN FLOOR:	1,275	sq.ft.
UPPER FLOOR:	1,254	sq.ft.
BASEMENT:	1,275	sq.ft.
GRAND TOTAL :	3,804	sq.ft.

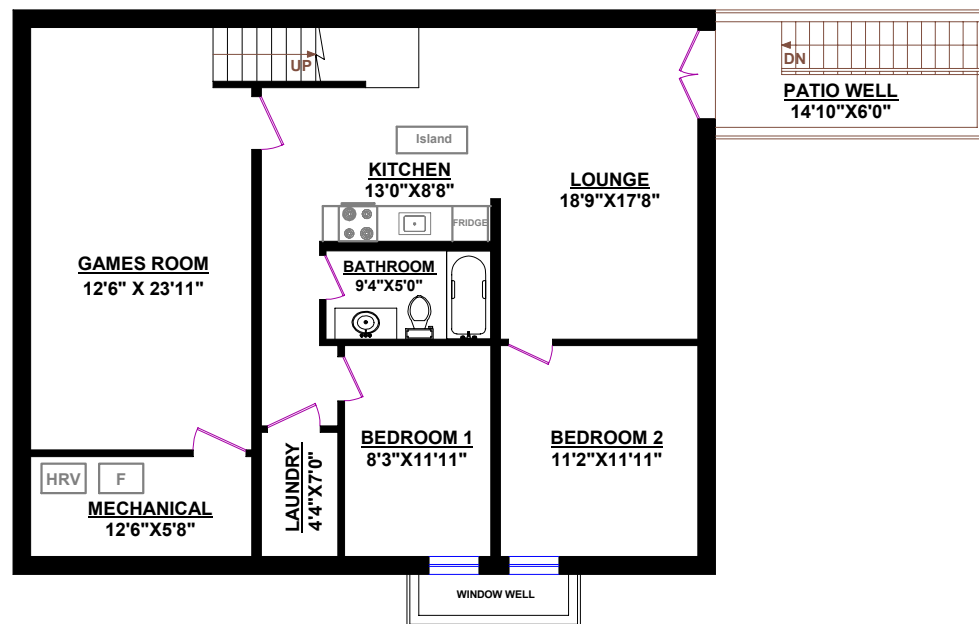
* Based on provided blueprints



MAIN FLOOR



UPPER LEVEL



BASEMENT

*All room dimensions, names and square footage for this house were based on provided blueprints and may vary from the dimensions and names of the rooms and square footage of the house as built. Square Footage may include lower height ceiling areas, openings in floors not associated with stairs, or openings in floors exceeding the area of associated stairs, or unfinished areas.

