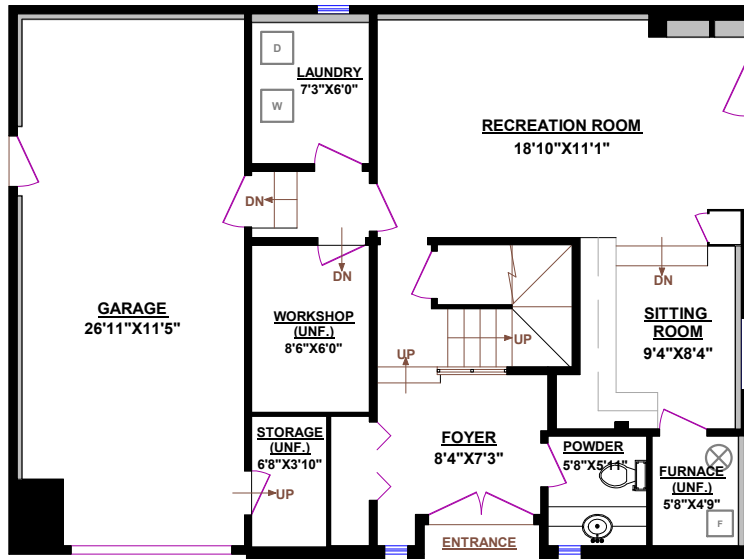


MAIN FLOOR



LOWER LEVEL



TOM HASSAN

604.809.9777 cell
tom@tomhassan.com
www.tomhassan.com

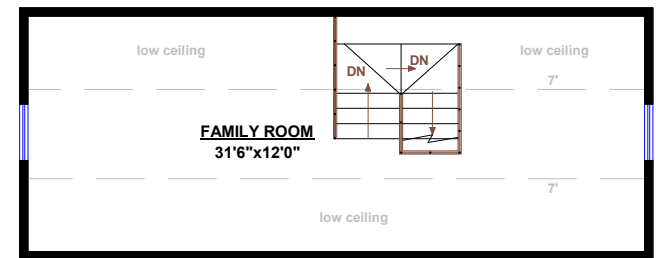


2397 Marine Drive,
West Vancouver V7V1K9

4701 PICCADILLY S. WEST VANCOUVER

TOTALS		OTHER AREAS:	
Main Floor (finished):	1,489 sq.ft.	Garage:	338 sq.ft.
Lower Level (finished):	604 sq.ft.	Deck:	223 sq.ft.
TOTAL FINISHED:	2,093 sq.ft.		
Lower Level (unfinished):	116 sq.ft.		
TOTAL UNFINISHED:	116 sq.ft.		
Upper Level*:	418 sq.ft.		
GRAND TOTAL:	2,627 sq.ft.		

* Ceiling height of more than half of the area is below 7 feet.



UPPER LEVEL *

CARPOT
21'0"X11'7"
approx.

