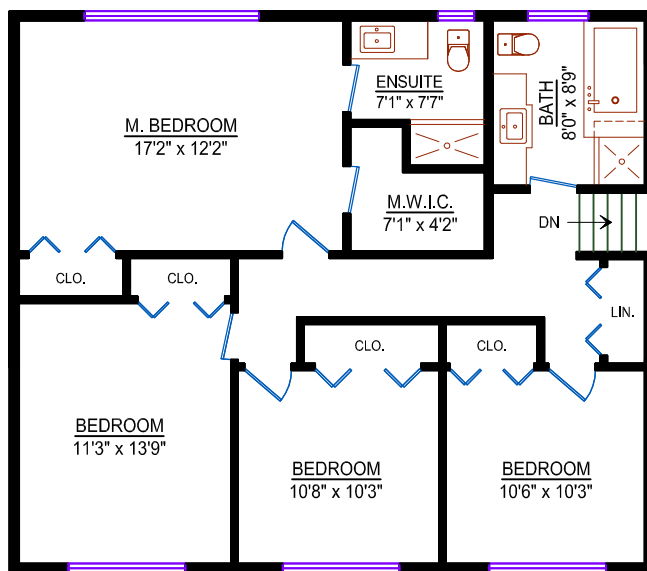


MAIN LEVEL
Area: 1861 sq. ft.



UPPER LEVEL
Area: 1023 sq. ft.

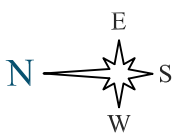


LOWER LEVEL
Area: 86 sq. ft. (Unfin.)
Area: 358 sq. ft. (Fin.) Area: 312 sq. ft. (Low-Level / Unfin.)

**950 11th Street
West Vancouver, BC**

Main Level:	1861 sq. ft.
Upper Level:	1023 sq. ft.
Lower Level:	358 sq. ft.
Total: (Fin.)	3242 sq. ft.
Lower Level:	86 sq. ft.
(Unfinished)	
Grand Total:	3328 sq. ft.

Other Areas: (not included in total)
 Low-Level Stor. 312 sq. ft. (Elevated 4'-8" H. / Unfin.)
 Patio: (South Side) 337 sq. ft.
 Garage: 478 sq. ft. (Not Shown - Detached - 17' 5" x 21' 2")



Design Ideas 4u
 Floorplans - Design
 604-862-5914
 * room dimensions are approximate *



Tom Hassan
 604.809.9777
 tom@northshorehome.ca
 www.northshorehome.ca